

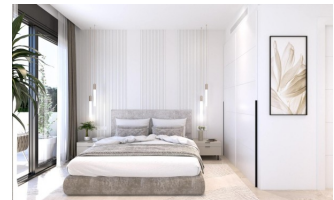
REF: # 11969

()



INFO

PRICE:	279.900 €
PROPERTY TYPE:	Apartment
LOCATION:	()
BEDROOMS:	2
Bathrooms:	2
Build:	69 (m2)
Plot:	-
Terrace:	56 (m2)
Year:	
Floor:	-
Old price	-



DESCRIPTION

NEW BUILD RESIDENTIAL APARTMENT, LOS BALCONES, TORREVIEJA - Special offer, included in the price, White Goods, A/C, Spotlights and exterior lights, Shower screen in both bathrooms and Pergola for top floors with 2.2Kw solar panels. This 69m2 apartment consists of 2 bedrooms, 2 bathrooms, open lounge / Kitchen & Dining area, private 56m2 terrace, communal pool and gardens. Discover the perfect harmony between luxury and comfort with spectacular views of the pink lagoon of Torrevieja, creating a unique experience where nature becomes an integral part of your daily life. The common areas are an extension of your own private oasis. Immerse yourself in our infinity pool while enjoying panoramic views of the pink lagoon, play with the little ones in the playground, or stroll through the landscaped green areas. Strategically nestled, places you minutes away from the beaches of Torrevieja, the bustling Zenia Boulevard shopping center, and a variety of amenities such as supermarkets, pharmacies, and restaurants. The proximity to golf courses and the highway exit to Alicante Airport (60km drive) ensures easy access to everything you love. These properties are more than a home; it is a lifestyle that embraces natural beauty, modern comfort, and convenience. Exceptional residential is the perfect place to live the life you've always imagined. Welcome to new residential, where each day is a masterpiece of luxury and serenity!

STYLE

- Modern
- Contemporary

VIEWS

- Panoramic views

AIRCONDITIONING

- Central airconditioning

DISTANCE TO :

Beach : 200 m

Airport: 60 Km

Town center : 3 Km

FURNITURE

- Not furnished

PARKING

Parking no Cars: 1

FLOORING

- Tile floors
- Stone floors

KITCHEN

- Open kitchen

GARDEN AND TERRACES

- Open terrace
- Exterior lights
- Palm trees
- Play Ground
- Landscaped
- Fenced
- Communal Garden

EXTRA

- Built in wardrobes
- Alarm
- Reinforced door
- Double glazed windows

PROPERTY GALLERY









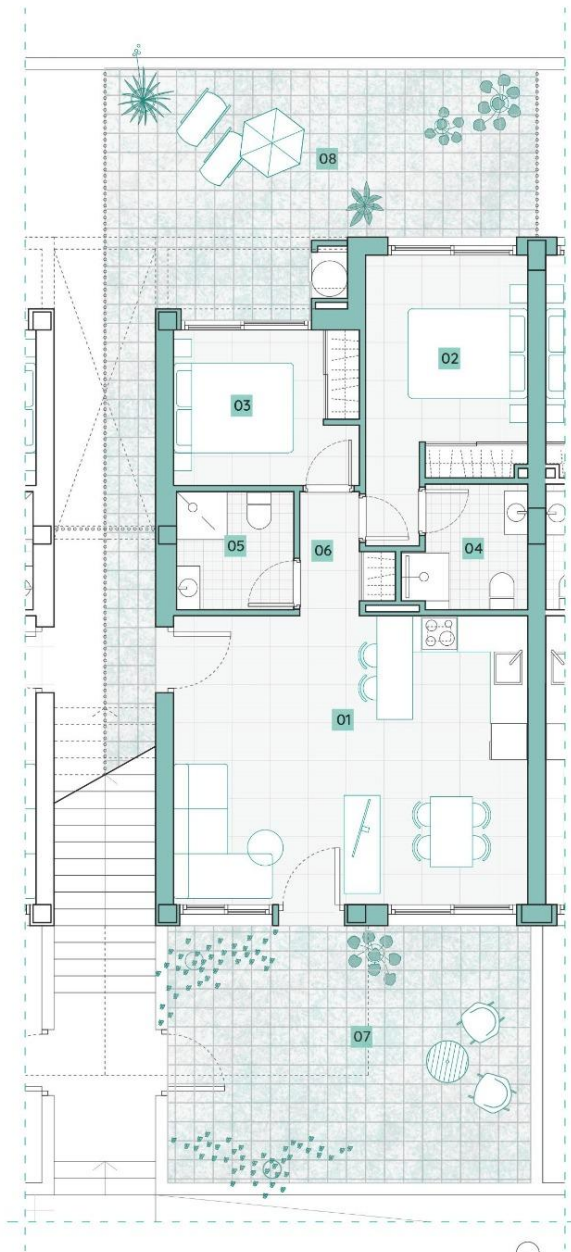






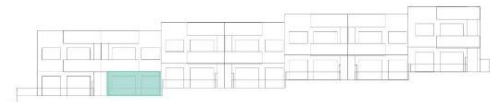
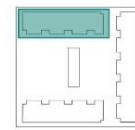






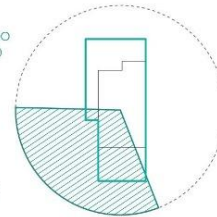
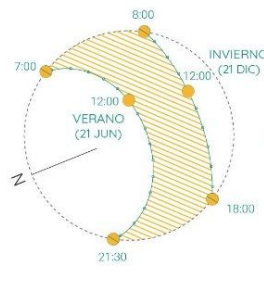
vivienda 03

Ubicación en el residencial/
Location in the residential



Estudio de soleamiento/Sunlight study

Análisis de vistas/Views study



PLANTA BAJA/GROUND FLOOR

Superficies útiles/Useful surfaces

01	Salón-Comedor-Cocina/Living r.-Kitchen	28,50m ²
02	Dormitorio1/Bedroom1	11,00m ²
03	Dormitorio2/Bedroom2	8,10m ²
04	Baño1/Bathroom1	4,00m ²
05	Baño2/Bathroom2	3,85m ²
06	Distribuidor/Corridor	2,60m ²
07	Terraza1/Terrace1	26,00m ²
08	Terraza2/Terrace2	30,00m ²
Sup.útil total PB/GF total useful surface		114,05m ²

RESUMEN DE SUPERFICIES/ SUMMARY OF SURFACES

Superficie útil total/ Total useful surface	58,05m ²
Superficie terrazas/ Terraces area	56,00m ²
Superficie construida/Built area	69,30m ²
Superficie parcela/Plot area	130,00m ²



"Experience our experience - Because you deserve the best"