



**In Sun
Properties Spain**
since 1999

REF: # 12085



INFO

PRICE: 159.000 €

PROPERTY TYPE: Penthouse

LOCATION:

BEDROOMS: 1

Bathrooms: 1

Build: 57 (m2)

Plot: -

Terrace: 30 (m2)

Year: -

Floor: -

Old price -



DESCRIPTION

NEW BUILD RESIDENTIAL IN ALGORFA New Build residential of 41 stylish apartments and penthouses in Algorfa. Residential consist of 1, 2, and 3-bedroom apartments, with 1 or 2 bathrooms, open plan kitchen with the lounge area, fitted wardrobes. Modern penthouses has private solarium. Pre-installation of hot/cold air conditioning, supply via ducts and return via grilles in dropped ceiling. Kitchen and front in compact PVC, equipped with lower and upper cabinets, drawer fronts and doors in a combination of white laminate and wood laminate. Energy label A. An options underground parking space and storeroom at an extra cost. Access to a communal pool for relaxation and leisure. On-site gym for health and fitness enthusiasts. Nestled in the heart of a traditional village, Algorfa offers the perfect blend of Spanish charm and modern amenities, making it an ideal destination for both tourists and locals. Residential located within walking distance to the Town Centre, schools, and La finca Golf course. Only 15 minutes away from beautiful beaches and hospitals. A short 35-minute drive to the airport.

STYLE <ul style="list-style-type: none">• Modern• Contemporary	VIEWS <ul style="list-style-type: none">• Panoramic views	AIRCONDITIONING <ul style="list-style-type: none">• Central airconditioning	DISTANCE TO : <div>Beach : +10 Km</div> <div>Airport: 50 Km</div> <div>Town center : 50 m</div>
FURNITURE <ul style="list-style-type: none">• Not furnished	PARKING <div>Parking no Cars: 1</div>	MAIN LIVING AREA <ul style="list-style-type: none">• Gym	FLOORING <ul style="list-style-type: none">• Tile floors• Stone floors
KITCHEN <ul style="list-style-type: none">• Open kitchen	GARDEN AND TERRACES <ul style="list-style-type: none">• Fenced	EXTRA <ul style="list-style-type: none">• Built in wardrobes• Alarm• Double glazed windows• Door bell with camera• Video security• Lift	







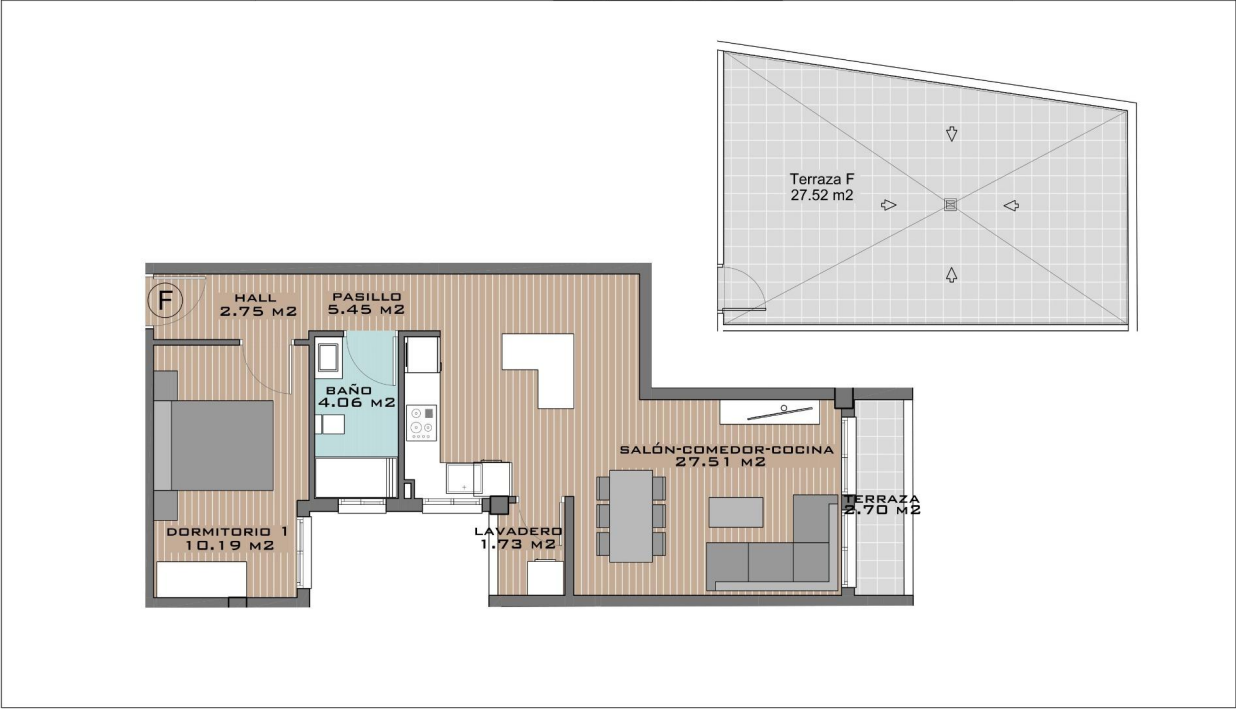








TIPO F (PLANTA 2º)	CUADRO DE SUPERFICIES		UBICACIÓN 	ORIENTACIÓN 
	SALÓN-COMEDOR-COCINA	27.51 M ²		
	DORMITORIO 1	10.19 M ²		
	DORMITORIO 2	0.00 M ²		
	DORMITORIO 3	0.00 M ²		
	BANO	4.06 M ²		
	ASEO	0.00 M ²		
	PASILLO	5.45 M ²		
	LAVADERO	1.73 M ²		
	HALL	2.75 M ²		
	TERRAZA (50%)	0.00 M ²		
	SUPERFICIE ÚTIL TOTAL	53.04 M ²		
	TERRAZA (100%)	0.00 M ²		
	TERRAZA PRIVADA	27.52 M ²		



"Experience our experience - Because you deserve the best"