



REF: # 12089



INFO

PRICE:	209.708 €
PROPERTY TYPE:	Apartment
LOCATION:	
BEDROOMS:	3
Bathrooms:	2
Build:	88 (m2)
Plot:	-
Terrace:	7 (m2)
Year:	-
Floor:	-
Old price	-



DESCRIPTION

NEW BUILD RESIDENTIAL IN ALGORFA New Build residential of 41 stylish apartments and penthouses in Algorfa. Residential consist of 1, 2, and 3-bedroom apartments, with 1 or 2 bathrooms, open plan kitchen with the lounge area, fitted wardrobes. Modern penthouses has private solarium. Pre-installation of hot/cold air conditioning, supply via ducts and return via grilles in dropped ceiling. Kitchen and front in compact PVC, equipped with lower and upper cabinets, drawer fronts and doors in a combination of white laminate and wood laminate. Energy label A. An options underground parking space and storeroom at an extra cost. Access to a communal pool for relaxation and leisure. On-site gym for health and fitness enthusiasts. Nestled in the heart of a traditional village, Algorfa offers the perfect blend of Spanish charm and modern amenities, making it an ideal destination for both tourists and locals. Residential located within walking distance to the Town Centre, schools, and La finca Golf course. Only 15 minutes away from beautiful beaches and hospitals. A short 35-minute drive to the airport.

STYLE

- Modern
- Contemporary

VIEWS

- Panoramic views

AIRCONDITIONING

- Central airconditioning

DISTANCE TO :

Beach : +10 Km

Airport: 50 Km

Town center : 50 m

FURNITURE

- Not furnished

PARKING

Parking no Cars: 1

MAIN LIVING AREA

- Gym

FLOORING

- Tile floors
- Stone floors

KITCHEN

- Open kitchen

GARDEN AND TERRACES

- Fenced

EXTRA

- Built in wardrobes
- Alarm
- Reinforced door
- Double glazed windows
- Door bell with camera
- Video security
- Lift

PROPERTY GALLERY





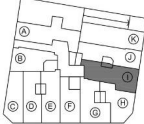



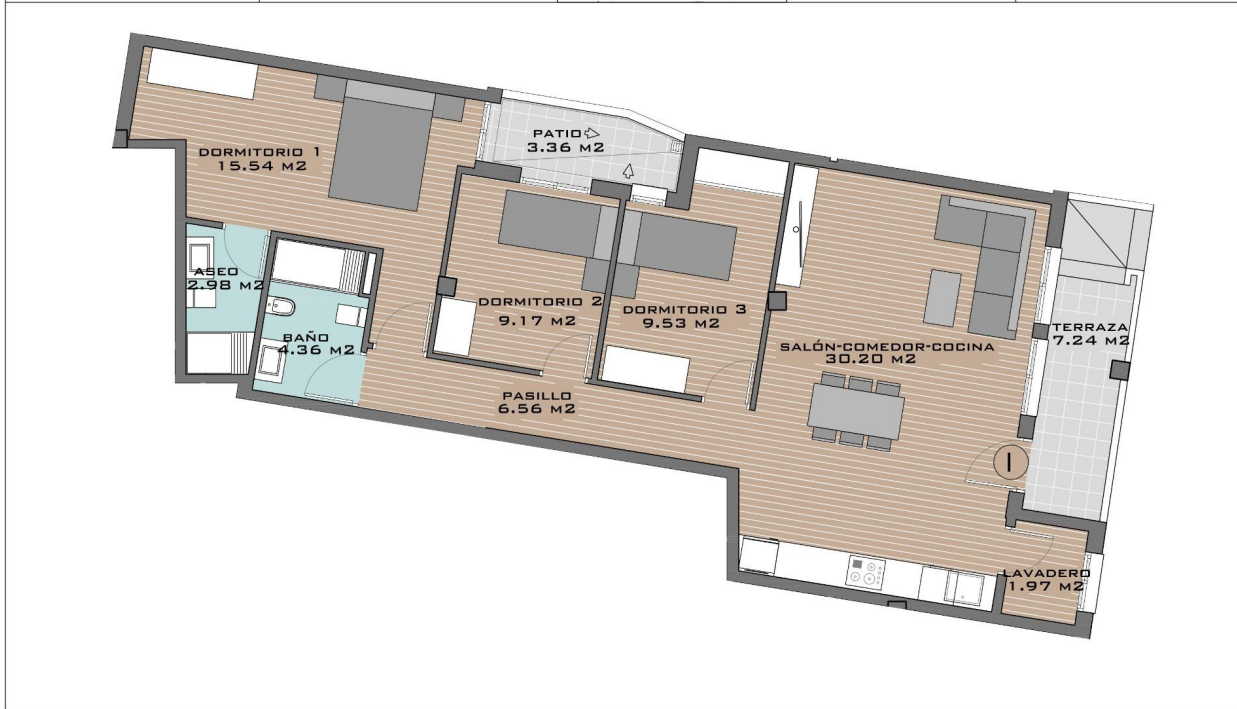








TIPO I (PLANTA BAJA)	CUADRO DE SUPERFICIES		UBICACIÓN 	ORIENTACIÓN 
	SALÓN-COMEDOR-COCINA 30.20 M ² DORMITORIO 1 15.54 M ² DORMITORIO 2 9.17 M ² DORMITORIO 3 9.53 M ² BAÑO 4.36 M ² ASEO 2.98 M ² PASILLO 6.56 M ² LAVADERO 1.97 M ² TERRAZA (50%) 3.62 M ² SUPERFICIE ÚTIL TOTAL 83.93 M² PATIO 3.36 M ² TERRAZA (100%) 7.24 M ²			



"Experience our experience - Because you deserve the best"