



REF: # 12121



#### INFO

**PRICE:** 209.900 €

**PROPERTY TYPE:** Apartment

**LOCATION:**

**BEDROOMS:** 2

**Bathrooms:** 2

**Build:** 63 (m2)

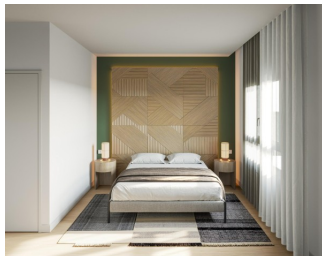
**Plot:** -

**Terrace:** 85 (m2)

**Year:** -

**Floor:** -

**Old price** -



#### DESCRIPTION

NEW BUILD GROUND FLOOR APARTMENT IN SAN MIGUEL DE SALINAS - with private solarium This 63m2 Top Floor Apartment consists of 2 bedrooms, 2 bathrooms, open plan lounge / dining and kitchen area, 14m2 private terrace and 71m2 solarium. It is located within an exclusive residential complex offering high quality homes with excellent thermal and acoustic insulation, top quality finishes and complete facilities. The facilities include two swimming pools, large garden areas, and well-designed communal areas, guaranteeing a comfortable and safe environment. Each property has modern fitted kitchens, porcelain flooring and efficient plumbing and air conditioning systems. Residential located in San Miguel de Salinas near the Las Colinas and Campoamor golf courses, shopping centres, Torrevieja and La Mata lagoons and sandy beaches of Orihuela Costa. San Miguel de Salinas is a municipality in the Valencian Community, Spain. Located in the south of the province of Alicante, in the region of Vega Baja del Segura near the Region of Murcia. Alicante airport located 35 minutes drive away and Murcias Corvera airport is about 1 hour drive away.

<b>STYLE</b> <ul style="list-style-type: none"><li>• Modern</li><li>• Contemporary</li></ul>	<b>VIEWS</b> <ul style="list-style-type: none"><li>• Panoramic views</li></ul>	<b>AIRCONDITIONING</b> <ul style="list-style-type: none"><li>• Central airconditioning</li></ul>	<b>DISTANCE TO :</b> <div>Beach : +10 Km</div> <div>Airport: 60 Km</div>
<b>FURNITURE</b> <ul style="list-style-type: none"><li>• Not furnished</li></ul>	<b>PARKING</b> <div>Parking no Cars: 1</div>	<b>FLOORING</b> <ul style="list-style-type: none"><li>• Tile floors</li><li>• Stone floors</li></ul>	<b>KITCHEN</b> <ul style="list-style-type: none"><li>• Open kitchen</li></ul>
<b>GARDEN AND TERRACES</b> <ul style="list-style-type: none"><li>• Landscaped</li><li>• Fenced</li><li>• Private garden</li><li>• Communal Garden</li></ul>	<b>EXTRA</b> <ul style="list-style-type: none"><li>• Built in wardrobes</li><li>• Alarm</li><li>• Reinforced door</li><li>• Double glazed windows</li></ul>		



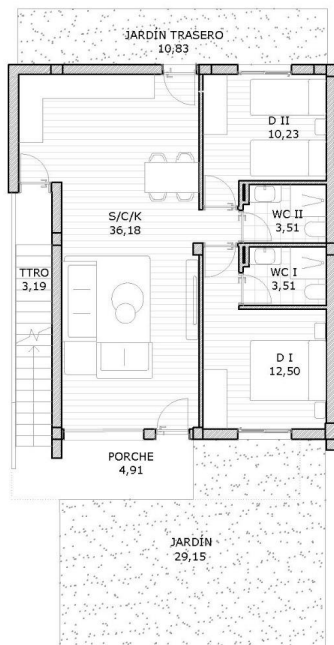












SUPERFICIES	
Salón/Comedor/Cocina	36.18
Dormitorio I	12.50
Dormitorio II	10.23
WC I	3.51
WC II	3.51
Trastero	3.19
Porche	4.91
Jardín	29.15
Jardín trasero	10.83
<b>TOTAL</b>	<b>114.01</b>





*"Experience our experience - Because you deserve the best"*