



REF: # 12132

()



INFO

PRICE:	330.000 €
PROPERTY TYPE:	Apartment
LOCATION:	()
BEDROOMS:	3
Bathrooms:	2
Build:	127 (m2)
Plot:	-
Terrace:	12 (m2)
Year:	-
Floor:	-
Old price	-



DESCRIPTION

NEW BUILD RESIDENTIAL COMPLEX IN SANTA POLA New Build modern gated residential complex consisting of 1, 2 and 3 bedroom apartments and penthouses with 2 complete bathrooms. The complex consists of 4 staircases of flats with spacious landscaped communal areas, including swimming pool, relaxation area and gymnasium. All properties have been carefully designed to provide you with an exceptional living experience, with high quality finishes and a modern style. Enjoy the spacious terraces, where you can relax, enjoy al fresco dining and watch the most spectacular sunsets. The location is simply unbeatable: next to the centre of Santa Pola and the palm grove, and only a few minutes from the promenade, you will be close to a wide range of restaurants, bars and supermarkets. Excellent connection with the national road 332, which connects all the southern Costa Blanca, and with the airport in only 15 minutes.

VIEWS	AIRCONDITIONING	ORIENTATION	PARKING
<ul style="list-style-type: none">• Panoramic views	<ul style="list-style-type: none">• Central airconditioning	South west	Parking no Cars: 1
MAIN LIVING AREA	GARDEN AND TERRACES	EXTRA	
<ul style="list-style-type: none">• Gym	<ul style="list-style-type: none">• Fenced	<ul style="list-style-type: none">• Lift	



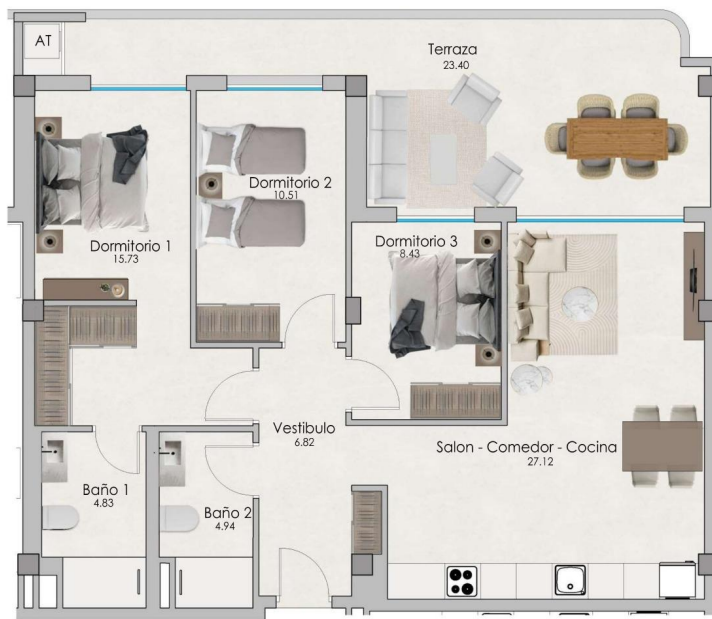
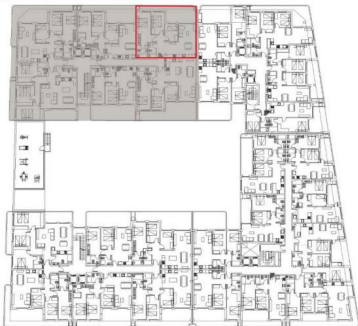




PLANTA PISO 1 / ESCALERA 1
VIVIENDA 4

VIVIENDA 4 / PP	SUPERFICIE UTILES		SUPERFICIE CONSTRUIDAS	
	Vestibulo	6.82	Cerrada	89.65
	Salon-comedor-cocina	27.12	Terraza	25.50
	Dormitorio 1	15.73		
	Baño 1	4.83		
	Dormitorio 2	10.51		
	Baño 2	4.94		
	Dormitorio 3	8.43		
	Terraza	23.40		
	TOTAL	101.78		115.15

Las superficies indicadas lo son con carácter informativo, no contractual y pueden sufrir ligeras variaciones por necesidades técnicas del proceso de construcción.









"Experience our experience - Because you deserve the best"