



**In Sun
Properties Spain**
since 1999

REF: # 12133

()



INFO

PRICE: 303.500 €

PROPERTY TYPE: Apartment

LOCATION: ()

BEDROOMS: 3

Bathrooms: 2

Build: 94 (m2)

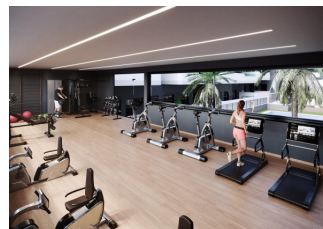
Plot: -

Terrace: 5 (m2)

Year:

Floor: -

Old price -



DESCRIPTION

NEW BUILD RESIDENTIAL COMPLEX IN SANTA POLA - only 1 km from the beach! Lovely 94m2 apartment with 3 bedrooms, 2 bathrooms, open lounge / kitchen and dining area, private 10m2 terrace and parking space. This new build modern gated residential complex consists of 1, 2 and 3 bedroom apartments and penthouses. The complex consists of 4 staircases of flats with spacious landscaped communal areas, including swimming pool, relaxation area and gymnasium. All properties have been carefully designed to provide you with an exceptional living experience, with high quality finishes and a modern style. Enjoy the spacious terraces, where you can relax, enjoy al fresco dining and watch the most spectacular sunsets. The location is simply unbeatable: next to the centre of Santa Pola and the palm grove, and only a few minutes from the promenade, you will be close to a wide range of restaurants, bars and supermarkets. Excellent connection with the national road 332, which connects all the southern Costa Blanca, and with the airport in only 15 minutes.

STYLE <ul style="list-style-type: none">• Modern• Contemporary	VIEWS <ul style="list-style-type: none">• Panoramic views	AIRCONDITIONING <ul style="list-style-type: none">• Central airconditioning	DISTANCE TO : <div>Beach : 1 Km</div> <div>Airport: 40 Km</div> <div>Town center : 3 Km</div>
FURNITURE <ul style="list-style-type: none">• Not furnished	PARKING <div>Parking no Cars: 1</div>	MAIN LIVING AREA <ul style="list-style-type: none">• Gym	FLOORING <ul style="list-style-type: none">• Tile floors• Stone floors
KITCHEN <ul style="list-style-type: none">• Open kitchen	GARDEN AND TERRACES <ul style="list-style-type: none">• Landscaped• Fenced• Communal Garden	EXTRA <ul style="list-style-type: none">• Built in wardrobes• Alarm• Reinforced door• Double glazed windows• Lift	







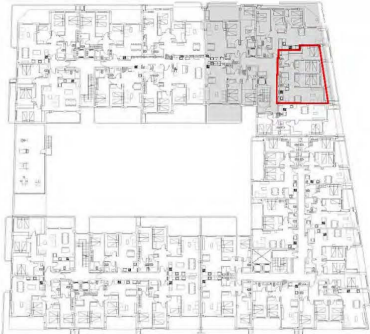


SANTA POLA

**PLANTA BAJA / ESCALERA 2
VIVIENDA 4**

SUPERFICIE UTILES		SUPERFICIE CONSTRUIDAS	
Vestibulo	2.97	Cerrada	82.42
Salon-comedor-cocina	24.26	Abierta	12.07
Dormitorio 1	15.02		
Baño 1	4.17		
Dormitorio 2	9.36		
Baño 2	3.62		
Dormitorio 3	9.36		
Paseo	2.69		
Terraza	7.46		
Balcon	2.80		
TOTAL	81.71		94.49

Las superficies indicadas lo son con carácter informativo, no contractual y pueden sufrir ligeras variaciones por necesidades técnicas del proceso de construcción.









"Experience our experience - Because you deserve the best"