



REF: # 12184

()



INFO

PRICE:	589.900 €
PROPERTY TYPE:	Villa
LOCATION:	()
BEDROOMS:	3
Bathrooms:	3
Build:	210 (m2)
Plot:	266 (m2)
Terrace:	61 (m2)
Year:	-
Floor:	-
Old price	-



DESCRIPTION

NEW BUILD VILLAS IN PRIVATE GATED RESORT IN PROVINCE OF MURCIA New Build villas in private gated resort in the Murcia region, surrounded by excellent golf courses and just 10 minutes from the sandy beaches of the Mar Menor Sea. Villas build over of 3 floors and has 3 bedrooms, 3 bathrooms, open plan kitchen and living-dining room, fitted wardrobes, basement, private garden with the pool and parking space. Located in a private gated resort, with a main access entrance and 24 hours security. The resort is designed around an impressive 126.000 m2 green area. It comprises walking and cycling paths, sport facilities, paddle and tennis courts, a mini-golf course, gardens, dog parks, leisure areas, clubhouse.... Also in the central area is the jewel of the resort, a crystal-clear artificial lake of almost 17.000m2 of water surface, surrounded by white sandy beaches and palm trees, bringing a piece of the Caribbean to the Murcia Region. There are 2 islands in the lake, one of them has its own bar, there are also "beach Chiringuitos" spread around the lake. The resort is strategically located less than 4 km from the beach and the town of Los Alcázares, where you can practice various water sports, surrounded by several golf courses and the city of Cartagena less than 15 minutes by car and 22 km from Murcia airport, therefore having a wide cultural, gastronomic and sports offer within reach.

VIEWS

- Panoramic views

AIRCONDITIONING

- Central airconditioning

PARKING

Parking no Cars: 1

GARDEN AND TERRACES

- Fenced
- Private garden



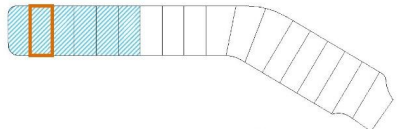






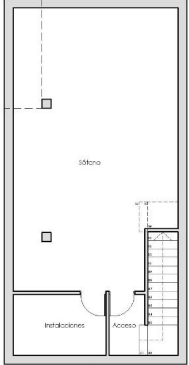




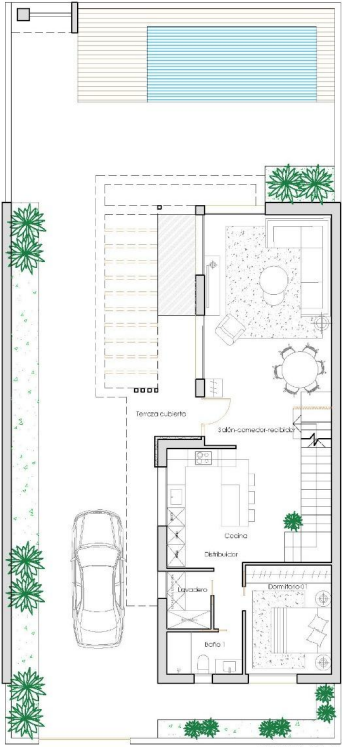


CUADRO DE SUPERFICIES

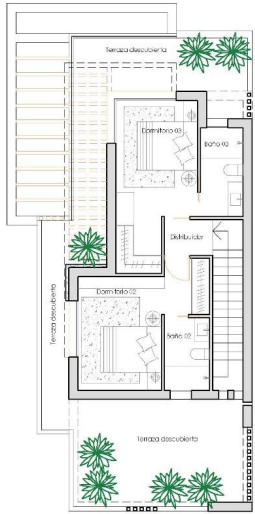
SUPERFICIE DE PARCELA	266,76m ²
PLANTA SÓTANO	
SUPERFICIE	71,89m ²
PLANTA BAJA	
SUPERFICIE VIVIENDA	89,73m ²
PORCHE	17,24m ²
PLANTA PRIMERA	
SUPERFICIE VIVIENDA	52,78m ²
TERRAZAS	44,30m ²
SUPERFICIE CONSTRUIDA SOBRE RASANTE	142,50m²
PISCINA (2,50x5,60m)	14,00m ²
JARDÍN	150,10m ²



PLANTA SÓTANO



PLANTA BAJA



PLANTA PRIMERA

e:1/100







"Experience our experience - Because you deserve the best"