



REF: # 12247

()



#### INFO

<b>PRICE:</b>	225.000 €
<b>PROPERTY TYPE:</b>	Apartment
<b>LOCATION:</b>	()
<b>BEDROOMS:</b>	2
<b>Bathrooms:</b>	2
<b>Build:</b>	64 (m2)
<b>Plot:</b>	35 (m2)
<b>Terrace:</b>	20 (m2)
<b>Year:</b>	-
<b>Floor:</b>	-
<b>Old price</b>	-



#### DESCRIPTION

**NEW BUILD RESIDENTIAL COMPLEX IN EL RASO** - Apartments with TOURIST LICENCE - WONDERFUL INVESTMENT OPPORTUNITY! New Build gated residential complex of touristic apartments in El Raso, Guardamar del Segura. This new residential complex will consist of 78 touristic apartments and penthouses distributed on the ground floor, first floor, and second floor with solarium. All properties will have a parking space and storage room in the basement, which will be accessible from the community stairs or from the elevator on each floor. The common areas will include a pool area, reception/meeting room, outdoor gym, pétanque area, mini-golf, and spa. **DETAILS TO HIGHLIGHT IN OUR NEW DEVELOPMENT - RENTAL-ALLOWED HOUSING** - These apartments offer something that no other can in this residential area. You can enjoy your home for 4 months a year for personal use, and the rest of the year rented out, where you can obtain profitability without having to worry about anything, as a specialized rental company will manage everything for you. **FULLY FURNISHED HOMES** - all the homes in our new project will be fully furnished and ready to live in, with lighting, furniture, appliances, and fully finished bathrooms. **VARIOUS TYPES OF HOUSING TO CHOOSE FROM:** We offer various types of housing to choose from in different orientations. 2 bedrooms, 2 bathrooms and 3 bedrooms, 2 bathrooms. All 3-bedroom homes will be corner units, making them even more exclusive for clients. Among these, we offer homes with South, East, and West orientations. All with terraces/porches facing the green area and Laguna de La Mata. **UNBEATABLE VIEWS OF THE LAGUNA DE LA MATA:** From all the first and second-floor homes in our new development, you can enjoy privileged views of the Laguna de La Mata. Being the last development adjacent to it, you will have a dreamlike panorama of this natural setting.

PROXIMITY TO THE BEACH - Just 10 minutes by car or 15 minutes by bike, you can enjoy Moncayo Beach.

CLOSE TO SHOPPING CENTERS AND URBAN AREAS - Located just 10 minutes by car from the Habaneras shopping centre, 9 minutes from the dining and entertainment area of Ciudad Quesada, or 8 minutes from the centre of Guardamar del Segura, making our development have an unbeatable location.

GOLF COURSES: For lovers of this sport, it's worth mentioning that just 15 minutes by car, you can enjoy one of the best golf courses in Spain, located in the La Finca de Algorfa urbanization. Also, note the beautiful golf courses of La Marquesa and Vistabella, which are 10 and 20 minutes by car respectively. Complex located 30 minutes from Alicante airport and 1 hour Murcia - Corvera airport.

<b>STYLE</b> <ul style="list-style-type: none"><li>• Modern</li><li>• Contemporary</li></ul>	<b>VIEWS</b> <ul style="list-style-type: none"><li>• Panoramic views</li></ul>	<b>AIRCONDITIONING</b> <ul style="list-style-type: none"><li>• Central airconditioning</li></ul>	<b>DISTANCE TO :</b> <div>Beach : 4 Km</div> <div>Airport: 30 Km</div> <div>Town center : 4 Km</div>
<b>ORIENTATION</b> <div>South west</div>	<b>FURNITURE</b> <ul style="list-style-type: none"><li>• Not furnished</li></ul>	<b>PARKING</b> <div>Parking no Cars: 1</div>	<b>MAIN LIVING AREA</b> <ul style="list-style-type: none"><li>• Bathroom en-suite</li></ul>
<b>KITCHEN</b> <ul style="list-style-type: none"><li>• Open kitchen</li><li>• Closed kitchen</li></ul>	<b>GARDEN AND TERRACES</b> <ul style="list-style-type: none"><li>• Covered terrace</li><li>• Open terrace</li><li>• Fenced</li><li>• Stone walls</li><li>• Private garden</li><li>• Communal Garden</li></ul>	<b>HEATING</b> <ul style="list-style-type: none"><li>• Central electric heating</li></ul>	<b>EXTRA</b> <ul style="list-style-type: none"><li>• Built in wardrobes</li><li>• Reinforced door</li><li>• Double glazed windows</li><li>• Lift</li></ul>

## PROPERTY GALLERY













## BLOQ. 2 Nº: 25

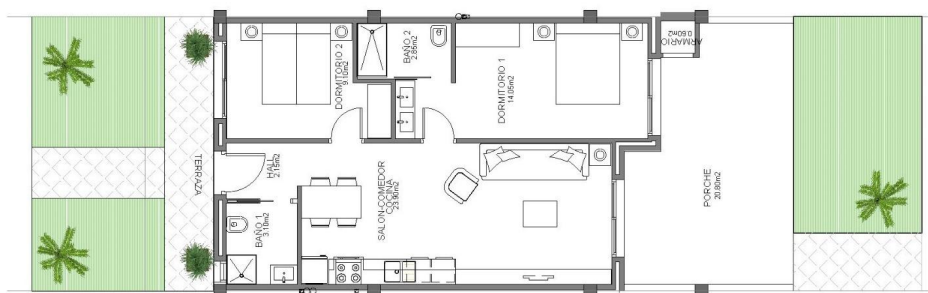
### SUPERFICIES(M2)

VIVIENDA.....64,10\*  
PORCHE.....20,80  
ARMARIO.....0,90  
TOTAL \_ 85,80

TERRAZA.....5,00  
JARDIN.....30,00

JARDIN \_ 35,00

\*SUP. CONSTRUIDAS  
2 DORMITORIOS  
2 BAÑOS



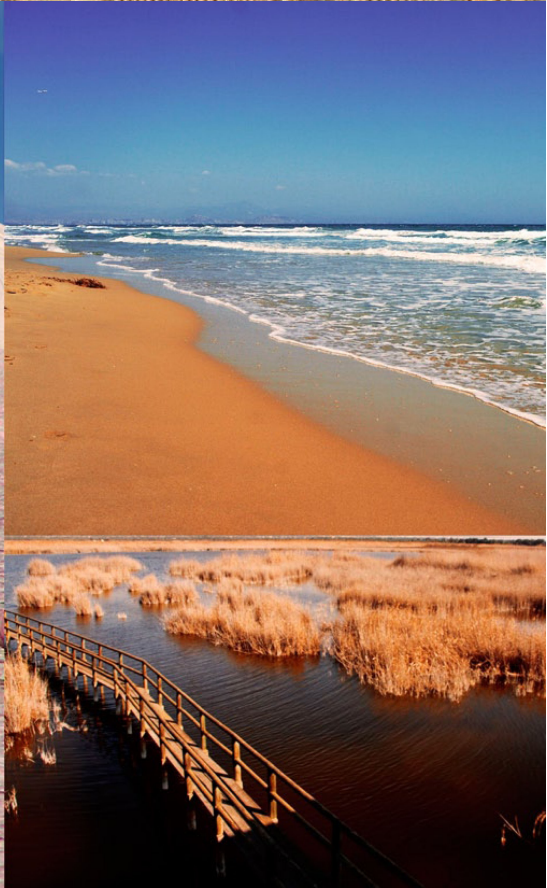
*Planta Baja*













*"Experience our experience - Because you deserve the best"*