



REF: # 12286

()



#### INFO

PRICE:	349.900 €
PROPERTY TYPE:	Villa
LOCATION:	()
BEDROOMS:	3
Bathrooms:	2
Build:	87 (m2)
Plot:	185 (m2)
Terrace:	57 (m2)
Year:	
Floor:	1
Old price	-



#### DESCRIPTION

MODERN NEW BUILD VILLAS IN SAN FULGENCIO - Lovely 87m2 modern villa on one level and consisting of 3 bedrooms, 2 bathrooms, an open living room, kitchen and a large roof terrace where you can enjoy the surroundings. A solarium is available at an extra cost. On the plot there is space for parking and a private swimming pool to cool off in (a private pool optional at an extra cost ) San Fulgencio is a pleasant village with several restaurants and shops and the location is very good with its proximity to the fantastic beaches of La Marina and the slightly larger town of Guardamar. The town of San Fulgencio is situated around 30 minutes from Alicante-Elche airport, 6km from the nearest golf course and just 7km from the nearest beach.

<b>STYLE</b> <ul style="list-style-type: none"><li>• Modern</li><li>• Contemporary</li></ul>	<b>VIEWS</b> <ul style="list-style-type: none"><li>• Panoramic views</li></ul>	<b>AIRCONDITIONING</b> <ul style="list-style-type: none"><li>• Central airconditioning</li></ul>	<b>DISTANCE TO :</b> <div>Beach : 7 Km</div> <div>Airport: 30 Km</div> <div>Town center : 8 Km</div>
<b>FURNITURE</b> <ul style="list-style-type: none"><li>• Not furnished</li></ul>	<b>PARKING</b> <div>Parking no Cars: 1</div>	<b>FLOORING</b> <ul style="list-style-type: none"><li>• Tile floors</li><li>• Stone floors</li></ul>	<b>KITCHEN</b> <ul style="list-style-type: none"><li>• Open kitchen</li></ul>
<b>GARDEN AND TERRACES</b> <ul style="list-style-type: none"><li>• Fenced</li><li>• Private garden</li></ul>	<b>EXTRA</b> <ul style="list-style-type: none"><li>• Built in wardrobes</li><li>• Alarm</li><li>• Reinforced door</li><li>• Double glazed windows</li></ul>		





















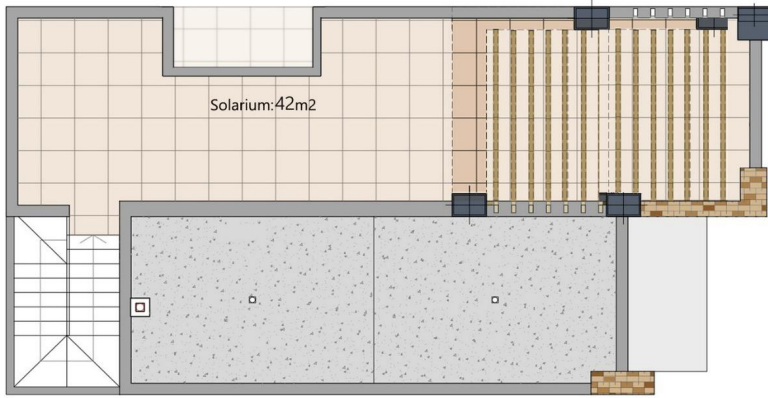








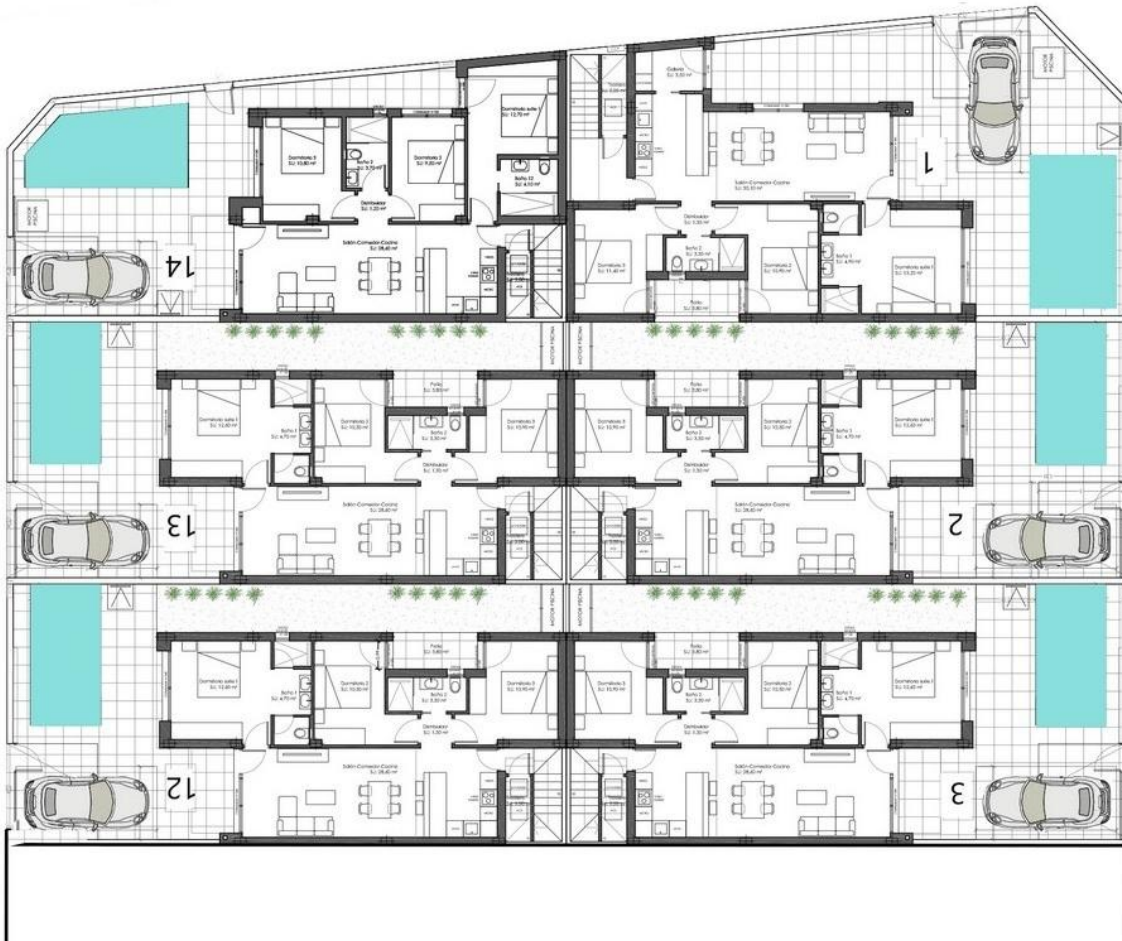




Num: 2, 3, 12, 13  
Parcela/ Plot: 185,502m2  
Planta Baja/Ground Floor: 87m2  
Solarium: 42 m2  
Total: 129 m2

Num: 14 (esq/ corner)  
Parcela/ Plot: 173,50m2  
Planta Baja/ Ground floor: 85m2  
Solarium: 38m2  
Total: 123m2

Num: 1 (esq/ corner)  
Parcela/ Plot: 207m2  
Planta Baja/ Ground floor: 97m2  
Solarium: 45m2  
Total: 142m2





*"Experience our experience - Because you deserve the best"*