

REF: # 12292



#### INFO

**PRICE:** 250.900 €

**PROPERTY TYPE:** Apartment

#### LOCATION:

**BEDROOMS:** 2

**Bathrooms:** 2

**Build:** 72 (m2)

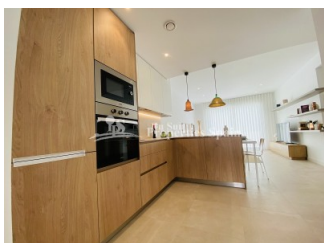
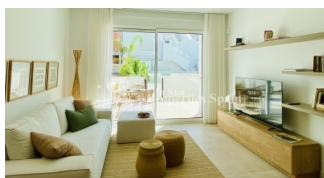
**Plot:** 24 (m2)

**Terrace:** 22 (m2)

**Year:** -

**Floor:** -

**Old price** -



#### DESCRIPTION

**NEW BUILD RESIDENTIAL OF BUNGALOW APARTMENTS IN PILAR DE LA HORADADA** New Build exclusive residential of 20 modern bungalow apartments in Pilar de la Horadada. You can choose 2 or 3 bedrooms bungalow apartments with 2 bathrooms. The ground floor units have large front and rear terraces and direct access to the communal pool and garden. The top floor properties have a very large rooftop solarium. The living space consists of a large open plan living / dining room and fully equipped kitchen with large sliding doors incorporating the outside space. The bedrooms have plenty of space, a built-in wardrobe and the main one has a large bathroom with a walk-in shower. The bathrooms are fully furnished and equipped with shower screens, cabinets and mirrors with pleasant low-level LED and mirror lighting and underfloor heating. All homes have a private parking space. Pilar de la Horadada is a typical Spanish village in the most southern part of the Costa Blanca. The large main street has supermarkets, lots of shops, restaurants and bars and some lovely squares. The beautiful beaches of Torre de la Horadada and Mil Palmeras with fine sand promenade is just 5 minutes away. The airports of Corvera (Murcia) and Alicante are respectively 40 and 55 minutes away

**STYLE**

- Modern
- Contemporary

**VIEWS**

- Panoramic views

**AIRCONDITIONING**

- Central airconditioning

**PARKING**

Parking no Cars: 1

**FLOORING**

- Tile floors
- Stone floors

**KITCHEN**

- Open kitchen

**GARDEN AND TERRACES**

- Fenced
- Private garden

**EXTRA**

- Built in wardrobes
- Alarm
- Reinforced door
- Double glazed windows
- Storage room
- Lift

PROPERTY GALLERY



























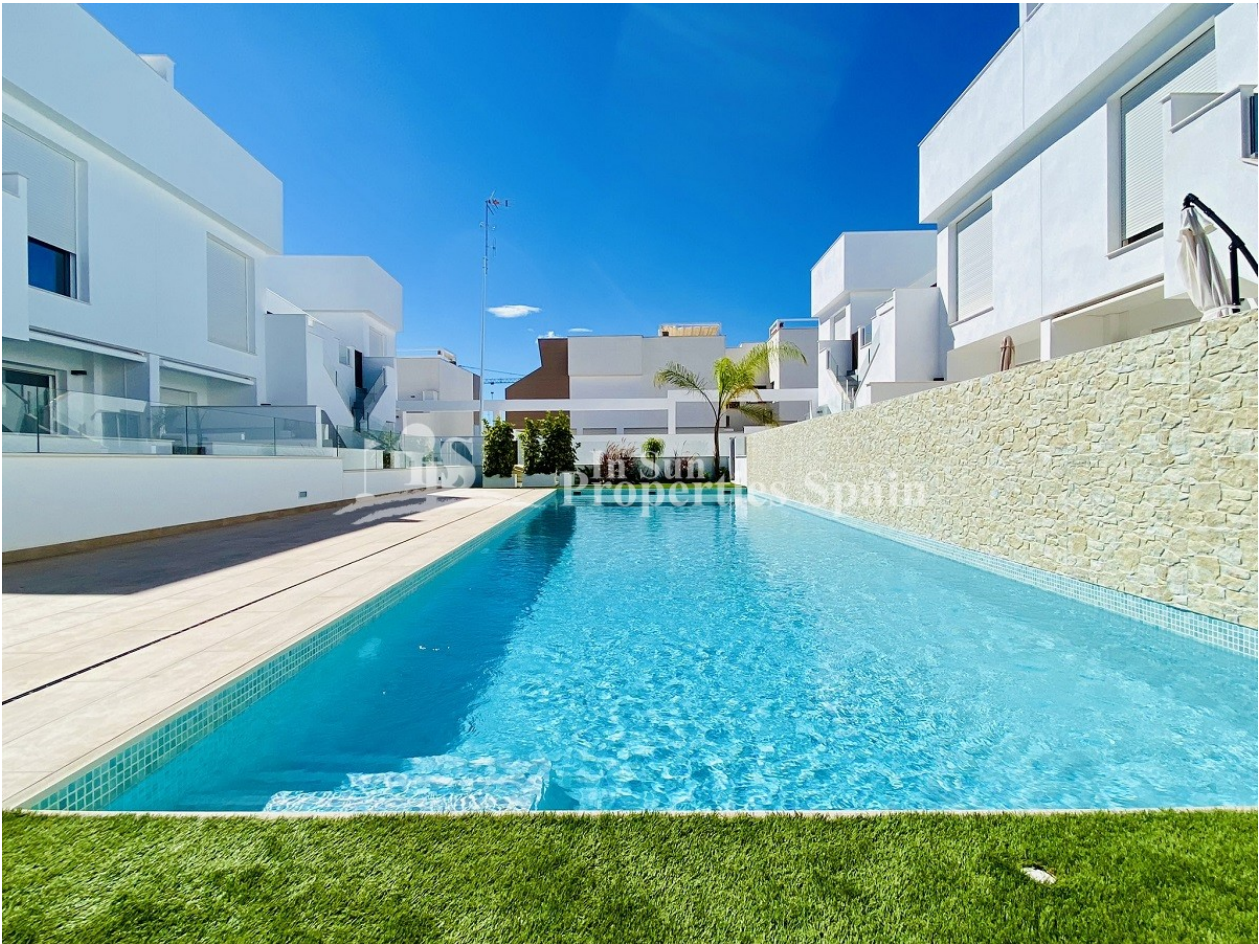




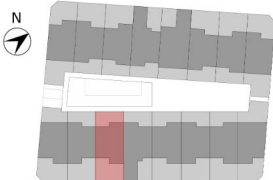








PLANTA BAJA



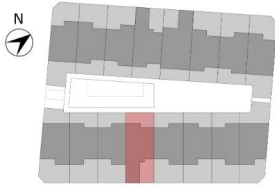
VIVIENDA P. BAJA 2 DORMITORIOS

CUADRO DE SUPERFICIES			
Planta	Uso	S. Útil	S. Const.
Baja	Vivienda	65.40 m2	74.07 m2
	Terraza	46.10 m2	46.10 m2
Total m2		111.50 m2	120.17 m2

ISO A3 - ESCALA 1:75



PLANTA BAJA



VIVIENDA P. BAJA 2 DORMITORIOS

CUADRO DE SUPERFICIES			
Planta	Uso	S. Útil	S. Const.
Baja	Vivienda	64.65 m <sup>2</sup>	72.31 m <sup>2</sup>
	Terraza	47.30 m <sup>2</sup>	47.30 m <sup>2</sup>
<b>Total m<sup>2</sup></b>		<b>111.95 m<sup>2</sup></b>	<b>119.61 m<sup>2</sup></b>

ISO A3 - ESCALA 1:75



ISO A3 - Escala 1:250

**MASTERPLAN**  
PLANTA PRIMERA





ISO A3 - Escala 1:250







*"Experience our experience - Because you deserve the best"*