

REF: # 12329

()



#### INFO

**PRICE:** 269.900 €

**PROPERTY TYPE:** Apartment

**LOCATION:** ()

**BEDROOMS:** 2

**Bathrooms:** 2

**Build:** 74 (m2)

**Plot:** 94 (m2)

**Terrace:** 19 (m2)

**Year:** -

**Floor:** -

**Old price** -



#### DESCRIPTION

**NEW BUILD RESIDENTIAL COMPLEX IN PILAR DE LA HORADADA ON THE GOLF COURSE** New Build residential is the perfect place to enjoy the Mediterranean lifestyle alongside golf. An exclusive residential complex of apartments, all with terraces, on the ground floor plus garden and penthouses plus solarium, designed to offer maximum space, light and comfort. In addition, the properties will have a parking space, community pool and garden area. The sophisticated and modern architecture used, as well as its careful selection of qualities, make our homes unique projects, aimed at demanding clients, who are looking for a good investment and quality of life. Lo Romero Golf Resort is located in a privileged area of the municipality of Pilar de la Horadada (Alicante), in the heart of the Costa Blanca. The 18-hole golf course is close to beautiful beaches with crystal-clear waters and is perfectly connected by road to the cities of Alicante and Murcia, as well the airports of Corvera (Murcia) and Alicante are respectively 40 and 55 minutes away. Pilar de la Horadada is a typical Spanish village in the most southern part of the Costa Blanca. The large main street has supermarkets, lots of shops, restaurants and bars and some lovely squares. The beautiful beaches of Torre de la Horadada and Mil Palmeras with fine sand promenade is just 5 minutes away.

## VIEWS

- Panoramic views

## AIRCONDITIONING

- Central airconditioning

## PARKING

Parking no Cars: 1

## GARDEN AND TERRACES

- Fenced
- Private garden

## EXTRA

- Lift

PROPERTY GALLERY





















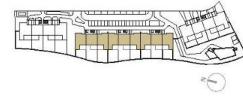












## VIVIENDA TIPO V.93

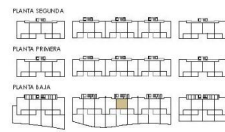
### SUPERFICIES ÚTILES / OCCUPIABLE AREA

LIVING ROOM - KITCHEN	31.90 m <sup>2</sup>
PASO / CORRIDOR	1.50 m <sup>2</sup>
DORMITORIO 1 / BEDROOM 1	12.10 m <sup>2</sup>
BAÑO 1 / BATHROOM 1	3.55 m <sup>2</sup>
DORMITORIO 2 / BEDROOM 2	10.45 m <sup>2</sup>
BAÑO 2 / BATHROOM 2	3.40 m <sup>2</sup>

TERRAZA 1 / TERRACE 1	22.00 m <sup>2</sup>
JARDIN 1 / GARDEN 1	94.95 m <sup>2</sup>

### SUPERFICIES CONST. / BUILT AREA

SUP. CERRADA / CLOSED AREA	74.60 m <sup>2</sup>
CLOSED AREA + TERRACE	96.60 m <sup>2</sup>
CLOSED AREA + TERRACE + GARDEN	191.55 m <sup>2</sup>



*"Experience our experience - Because you deserve the best"*