

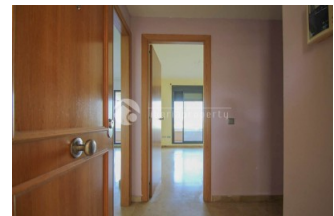
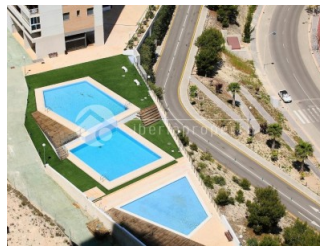
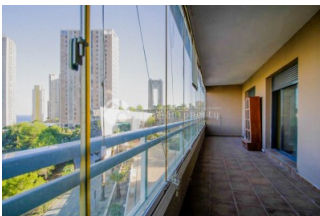
REF: # 12347

()



**INFO**

|                       |           |
|-----------------------|-----------|
| <b>PRICE:</b>         | 195.000 € |
| <b>PROPERTY TYPE:</b> | Apartment |
| <b>LOCATION:</b>      | ()        |
| <b>BEDROOMS:</b>      | 2         |
| <b>Bathrooms:</b>     | 2         |
| <b>Build:</b>         | 76 (m2)   |
| <b>Plot:</b>          | -         |
| <b>Terrace:</b>       | 20 (m2)   |
| <b>Year:</b>          | 2006      |
| <b>Floor:</b>         | 2         |
| <b>Old price</b>      | -         |



**DESCRIPTION**

La urbanización está ubicada en una tranquila zona residencial en el área del golf de Benidorm. El complejo ofrece una variedad de amplias zonas comunes, que incluyen varias piscinas, pistas de tenis, jardines comunitarios, una piscina climatizada y un gimnasio. La vivienda se distribuye en un acogedor recibidor, un espacioso salón-comedor, una cocina abierta con galería, dos cómodos dormitorios y dos modernos cuartos de baño. Además, cuenta con una amplia terraza equipada con acristalamiento abatible, ideal para disfrutar de las vistas durante todo el año. La propiedad también incluye un práctico trastero. Es importante señalar que la vivienda necesita una actualización estética para ponerla a su máximo potencial. The residential complex is located in a peaceful area of the Benidorm golf course. The complex features a range of spacious common areas, including several swimming pools, tennis courts, communal gardens, a heated pool, and a gym. The property is laid out with a welcoming entrance hall, a spacious living-dining area, an open-plan kitchen with a utility room, two comfortable bedrooms, and two modern bathrooms. Additionally, it boasts a large terrace with retractable glass panels, perfect for enjoying the views year-round. The property also includes a handy storage room. Please note that the property requires some cosmetic updates to realize its full potential.

**STYLE**

- Modern

**VIEWS**

- Panoramic views
- Sea views
- Mountain views

**DISTANCE TO :**

Beach : 1 Km

Airport: 40 Km

Town center : 1 Km

**FURNITURE**

- Not furnished

**TAX**

Community : 1.250 €

I.B.I : 400 €

**FLOORING**

- Tile floors

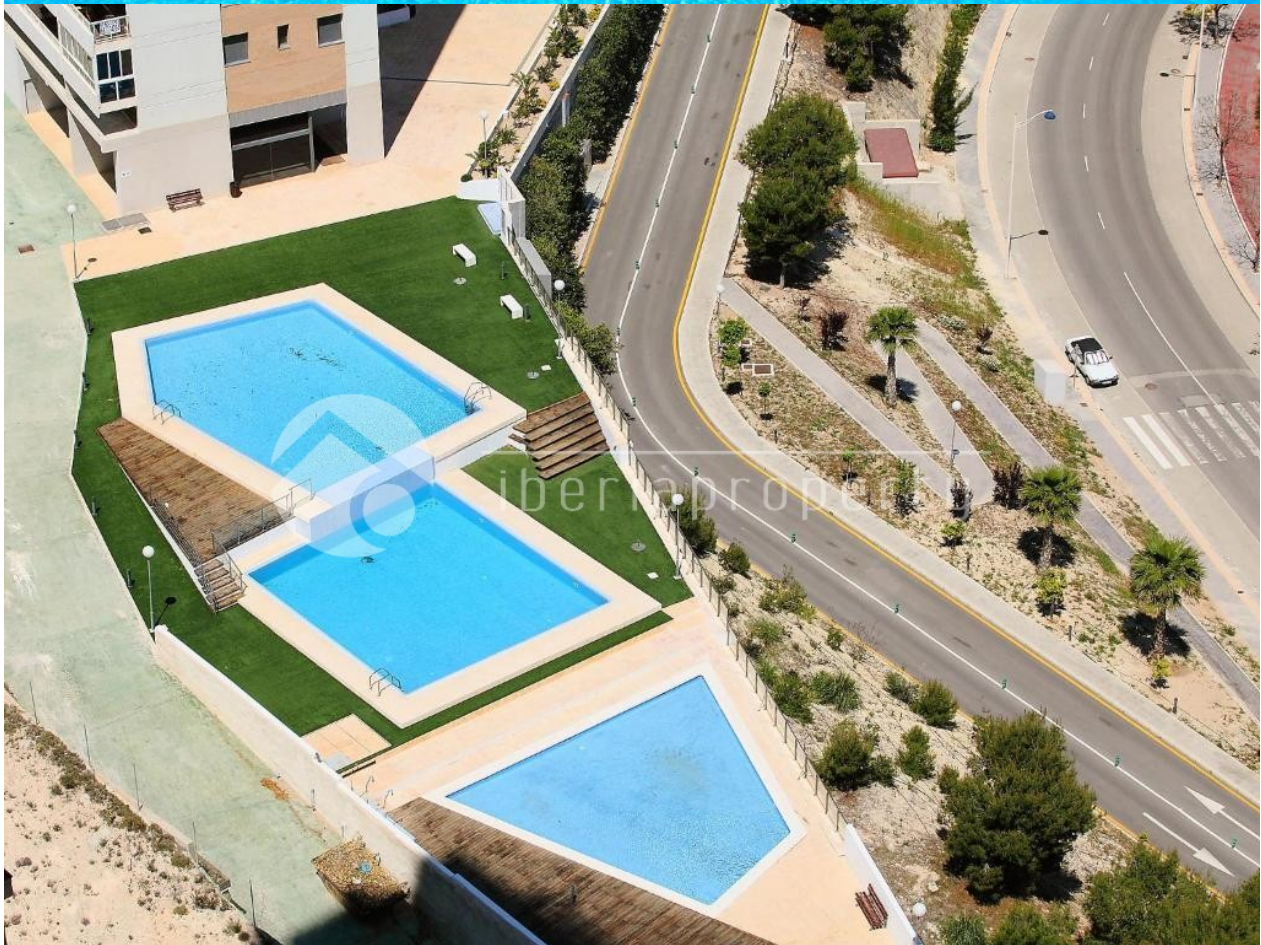
**GARDEN AND TERRACES**

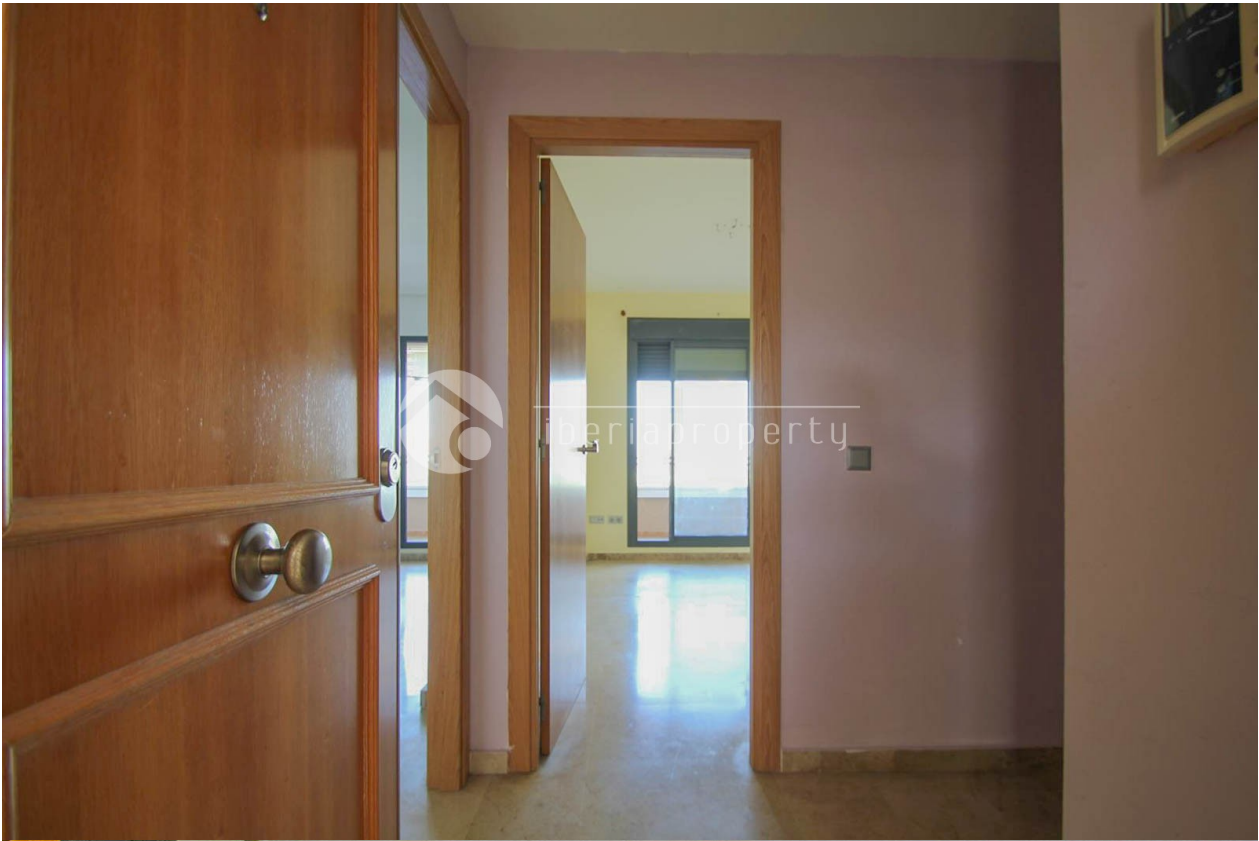
- Covered terrace
- Tennis court
- Play Ground
- Padle tennis
- Communal Garden

**EXTRA**

- Double glazed windows
- Storage room
- Laundry room
- Lift
- Internet
- Concierge















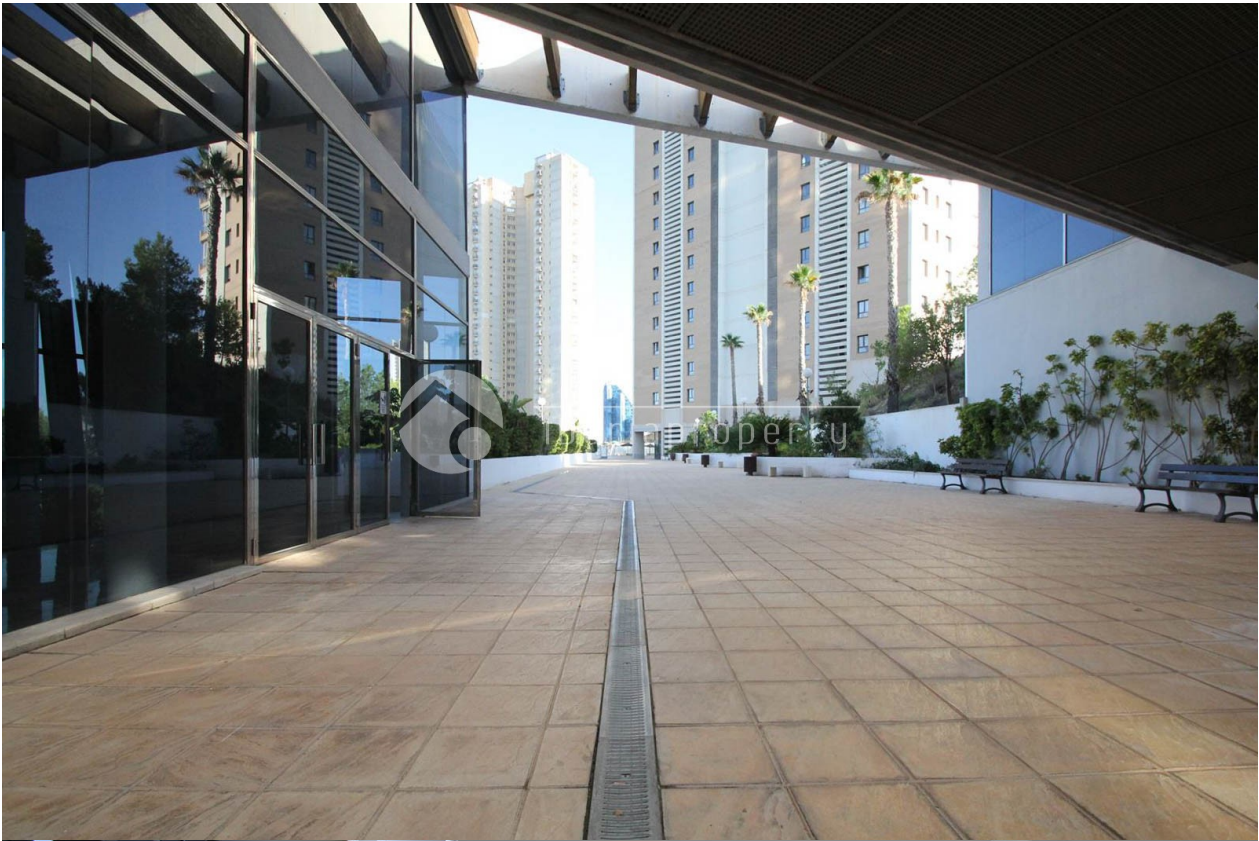












*"Experience our experience - Because you deserve the best"*