

REF: # 12350

()



#### INFO

<b>PRICE:</b>	1.095.000 €
<b>PROPERTY TYPE:</b>	Villa
<b>LOCATION:</b>	()
<b>BEDROOMS:</b>	3
<b>Bathrooms:</b>	3
<b>Build:</b>	308 (m2)
<b>Plot:</b>	394 (m2)
<b>Terrace:</b>	146 (m2)
<b>Year:</b>	-
<b>Floor:</b>	-
<b>Old price</b>	-



#### DESCRIPTION

**NEW BUILD VILLAS IN PRIVATE GATED RESORT IN PROVINCE OF MURCIA** New Build villas in private gated resort in the Murcia region, surrounded by excellent golf courses and just 10 minutes from the sandy beaches of the Mar Menor Sea. 15 New Build independent villas has 3 bedrooms, 3 bathrooms, guest toilet, large living room - kitchen with a wonderful double height, terrace with pool, private solarium with pre-installation for jacuzzi, basement. Modern villas stands out for its high quality finishes and for its well used spaces, an English patios to a higher level giving the option to create large spaces that replicate the comfort in the basement which with a toilet, utility room and laundry, the floors are finished, the walls painted and has pre - installation of A / C. Located in a private gated resort, with a main access entrance and 24 hours security. The resort is designed around an impressive 126.000 m2 green area. It comprises walking and cycling paths, sport facilities, paddle and tennis courts, a mini-golf course, gardens, dog parks, leisure areas, clubhouse.... Also in the central area is the jewel of the resort, a crystal-clear artificial lake of almost 17.000m2 of water surface, surrounded by white sandy beaches and palm trees, bringing a piece of the Caribbean to the Murcia Region. There are 2 islands in the lake, one of them has its own bar, there are also "beach Chiringuitos" spread around the lake. The resort is strategically located less than 4 km from the beach and the town of Los Alcázares, where you can practice various water sports, surrounded by several golf courses and the city of Cartagena less than 15 minutes by car and 22 km from Murcia airport, therefore having a wide cultural, gastronomic and sports offer within reach.

## VIEWS

- Panoramic views

## AIRCONDITIONING

- Central airconditioning

## GARDEN AND TERRACES

- Fenced
- Private garden

PROPERTY GALLERY













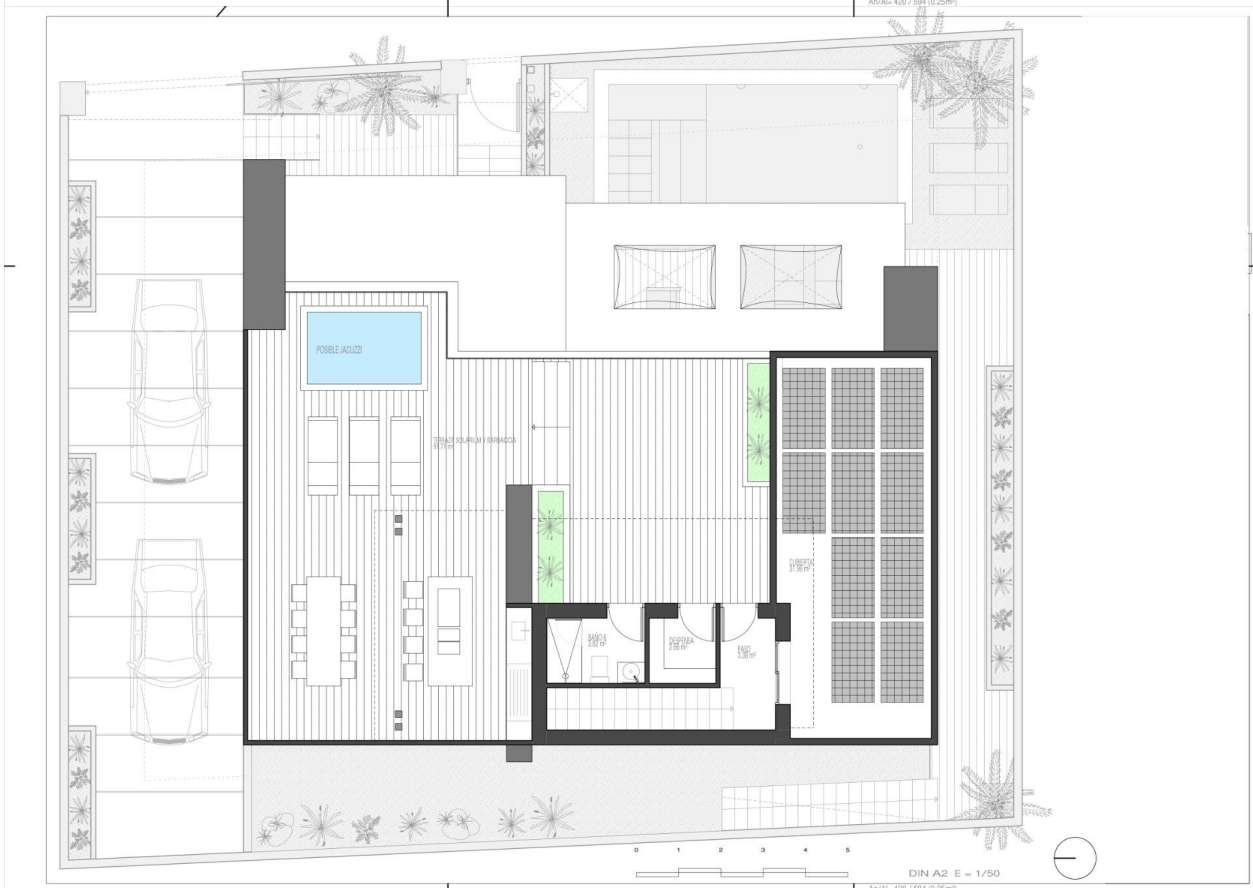
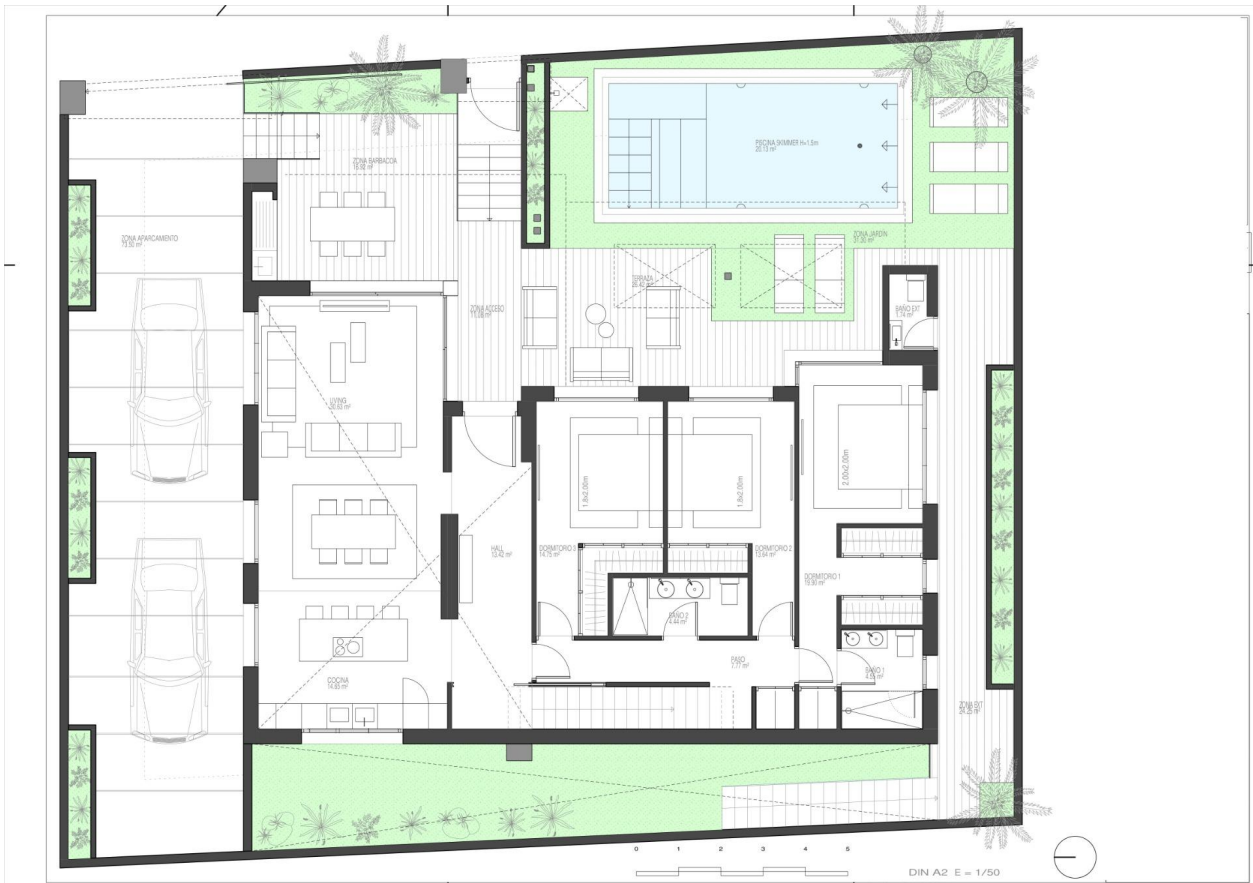




DIN A2 E = 1/50

Ar/Al= 420 / 594 (0.25m²)





*"Experience our experience - Because you deserve the best"*