



REF: # 12500



INFO

PRICE:	380.000 €
PROPERTY TYPE:	Townhouse
LOCATION:	
BEDROOMS:	3
Bathrooms:	3
Build:	194 (m2)
Plot:	133 (m2)
Terrace:	49 (m2)
Year:	-
Floor:	-
Old price	-



DESCRIPTION

New Development of Townhouses and Semi-Detached Villas in Benijófar This exclusive new development in the charming town of Benijófar offers 9 modern townhouses and semi-detached villas, each featuring 3 bedrooms, 3 bathrooms, a basement, private pool, on-site parking, and a rooftop solarium. **High-Quality Finishes and Design** All homes are built with top-quality finishes, including white lacquered doors and built-in wardrobes with magnetic closures. The kitchens are fully furnished and come equipped with high-end appliances such as a panelable refrigerator, microwave, oven, dishwasher, washing machine, extractor hood, and cooking hob. **Energy Efficiency and Comfort** These properties are designed for maximum comfort with air conditioning and top-tier thermal and acoustic insulation, featuring double-glazed Guardian Sun windows. The exterior carpentry is made of lacquered aluminum with thermal break technology, and the motorized shutters provide additional insulation. **Outdoor Living Space** Each home includes a private garden with a swimming pool finished in high-quality mosaic tiles, an outdoor shower, and a barbecue area with a sink. **Prime Location in Benijófar** Located just 8 km from Guardamar del Segura's beaches, Benijófar offers easy access to amenities and points of interest: •Alicante-Elche Airport: 40 km •La Finca Golf Course: 4 Km and La Marquesa Golf Course: 7 km •Zenía Boulevard Shopping Center: 20 km •Torrevieja Port: 13 km

VIEWS

- Panoramic views

AIRCONDITIONING

- Central airconditioning

GARDEN AND TERRACES

- BBQ/grill
- Private garden

PROPERTY GALLERY





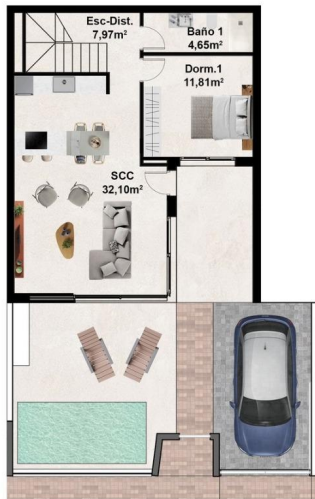






PARCELA 5 VIVIENDA E

SUPERFICIE ÚTIL 102,40 m²
 SUP. CONSTRUIDA 117,72 m²
 SUPERF. SÓTANO 77,57 m²
 SUPERF. SOLARIUM 38,34 m²
 SUPERF. PARCELA 133,63 m²



PLANTA BAJA

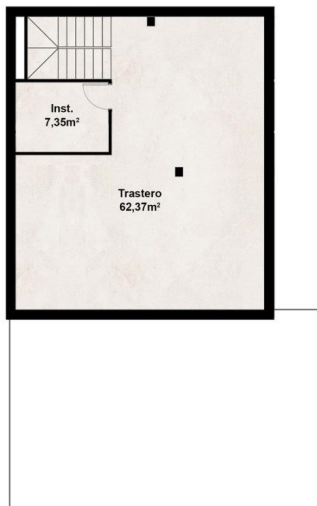


PLANTA PRIMERA

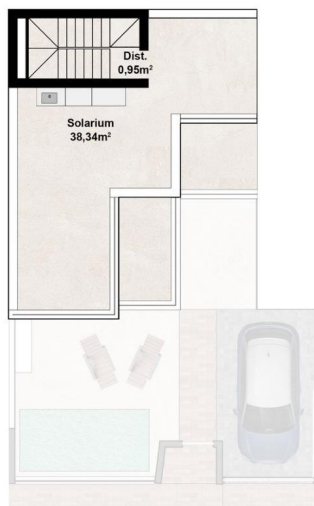


PARCELA 5 VIVIENDA E

SUPERFICIE ÚTIL 102,40 m²
 SUP. CONSTRUIDA 117,72 m²
 SUPERF. SÓTANO 77,57 m²
 SUPERF. SOLARIUM 38,34 m²
 SUPERF. PARCELA 133,63 m²



PLANTA SÓTANO



PLANTA SOLARIUM



"Experience our experience - Because you deserve the best"