



REF: # 12519

()



#### INFO

<b>PRICE:</b>	429.000 €
<b>PROPERTY TYPE:</b>	Villa
<b>LOCATION:</b>	()
<b>BEDROOMS:</b>	4
<b>Bathrooms:</b>	3
<b>Build:</b>	144 (m2)
<b>Plot:</b>	304 (m2)
<b>Terrace:</b>	71 (m2)
<b>Year:</b>	-
<b>Floor:</b>	-
<b>Old price</b>	-



#### DESCRIPTION

**NEW BUILD VILLAS IN VISTABELLA GOLF RESORT, ORIHUELA COSTA** New Build luxury villas built over 2 floors situated in Vistabella golf resort, between San Miguel and Los Montesinos in the Orihuela Costa. Villas with 4 bedrooms, 3 bathrooms, an open plan living room with the kitchen, big solarium, garden with parkig and space for the private pool. An options a private pool at an extra cost. Vistabella Golf resort has security entrance, 18 hole golf course, padel courts, bowling greens, supermarket and a great selection of bars and restaurants. Plans are now agreed for a new clubhouse, champagne bar, sushi bar, spa hotel, artificial beach, tennis court, football pitch, gourmet bar and much more transforming this resort into a 5 star luxury complex. Sandy beaches of La Mata and Guardamar del Segura located only 20 minues drive away. Alicante airport located 40 minutes away and Murcia airport about 1 hour away.

**VIEWS**

- Panoramic views

**AIRCONDITIONING**

- Central airconditioning

**PARKING**

Parking no Cars: 1

---

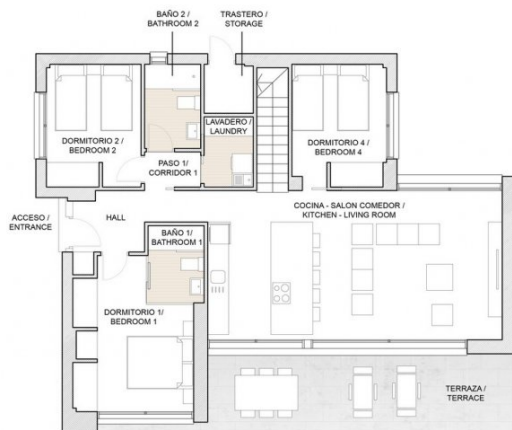
**GARDEN AND  
TERRACES**

- Fenced









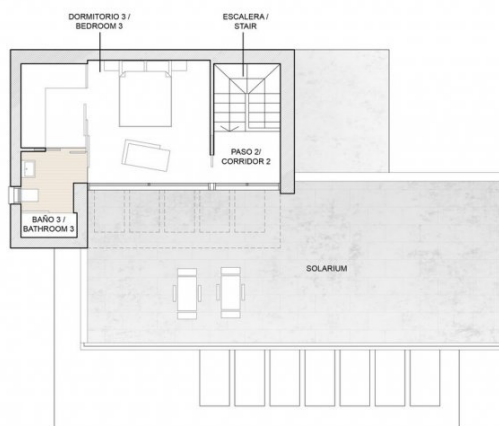
PLANTA BAJA /  
GROUND FLOOR

Superficie construida / Built area

PROPIEDAD / PROPERTY	144,43 m²
TERRAZAS / TERRACES	19,80 m²
SOLARIUM	52,20 m²
<b>TOTAL CONSTRUIDA / BUILT AREA</b>	<b>216,43 m²</b>

Planta Baja / Ground Floor  
Superficies útiles / Useful surface

ACCESO / ENTRANCE	1,39 m²
HALL	5,40 m²
DORMITORIO 1 / BEDROOM 1	13,03 m²
BAÑO 1 / BATHROOM 1	3,52 m²
COCINA-SALÓN COMEDOR / KITCHEN - LIVING ROOM	35,70 m²
DORMITORIO 2 / BEDROOM 2	9,37 m²
DORMITORIO 4 / BEDROOM 4	9,20 m²
BAÑO 2 / BATHROOM 2	3,84 m²
PASO 1 / CORRIDOR 1	1,60 m²
LAVADERO / LAUNDRY	2,80 m²
TRASTERO / STORAGE	1,95 m²
TERRAZA / TERRACE	19,80 m²



PLANTA ALTA /  
TOP FLOOR

Planta Alta / Top Floor  
Superficies útiles / Useful surface

ESCALERA / STAIR	5,10 m²
PASO 2 / CORRIDOR 2	2,79 m²
DORMITORIO 3 / BEDROOM 3	16,80 m²
BAÑO 3 / BATHROOM 3	4,10 m²
SOLARIUM	52,20 m²



















*"Experience our experience - Because you deserve the best"*