



REF: # 12654



#### INFO

**PRICE:** 294.000 €

**PROPERTY TYPE:** Apartment

**LOCATION:**

**BEDROOMS:** 2

**Bathrooms:** 2

**Build:** 78 (m2)

**Plot:** -

**Terrace:** 87 (m2)

**Year:** -

**Floor:** -

**Old price** -



#### DESCRIPTION

Exclusive Mediterranean Living in Lo Marabú, Ciudad Quesada Prime Location with Nature and Convenience Discover the charm of living in Lo Marabú, Ciudad Quesada, an exclusive residential area that combines modern comfort with the beauty of Mediterranean nature. Nestled in a prime location, this development offers easy access to essential services while providing a serene, tranquil environment. Just a short drive away, you'll find the stunning salt lagoons of La Mata and Torrevieja, a paradise for nature enthusiasts, photographers, and those seeking wellness. Beautiful Beaches and Outdoor Activities Only 15 minutes away by car, the unspoiled beaches of Guardamar del Segura and Torrevieja invite you to enjoy golden dunes and crystal-clear waters. These coastal gems offer opportunities for relaxation, water sports, and picturesque walks along the shore. For outdoor enthusiasts, the area boasts numerous hiking and cycling trails, while golf lovers will appreciate the proximity to several prestigious golf courses, providing a first-class sporting experience. High-Quality Homes and Amenities This residential complex features thoughtfully designed homes, including: Bungalows: Ground-floor units with private gardens or top-floor options with solariums. All bungalows include two bedrooms, two bathrooms, a parking space, and a storage room, set around a central communal area with a swimming pool and landscaped gardens. Villas: Independent properties with three bedrooms and three bathrooms, available in one- or two-story layouts. Each villa includes a private pool, a solarium, and parking within the plot. Optional basements are also available. Modern Comfort and Exceptional Features Every home is built with top-quality materials and finishes: PVC windows with double glazing and remote-controlled motorized shutters. Electric underfloor heating in bathrooms. Ducted air conditioning installation. Villas with private pools (3.00 x 6.00 m)

and stainless steel showers. Community pools with a children's area for bungalow residents. As a special launch offer, select homes include white goods and a furniture package. Excellent Connectivity and Local Highlights Strategically located in Rojales, Alicante, this development offers excellent infrastructure and connectivity: Alicante-Elche Airport (ALC): 38 km (35 minutes by car). Murcia-Corvera Airport (RMU): 65 km (50 minutes by car). Proximity to major roads such as the AP-7 and N-332 ensures easy access to nearby cities and attractions. Local shopping centers, restaurants, and daily amenities are within walking distance. Embrace Mediterranean Living With its perfect blend of modern living, natural beauty, and unparalleled convenience, this residential complex in Lo Marabú is the ideal choice for those seeking a high-quality lifestyle. Don't miss the chance to invest in your dream home in the heart of the Mediterranean. Contact us today to schedule a viewing or to learn more about this exceptional development!

**VIEWS**

- Panoramic views

**AIRCONDITIONING**

- Central airconditioning

**PARKING**

Parking no Cars: 1

---

**GARDEN AND  
TERRACES**

- Fenced





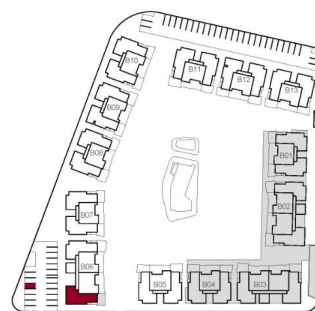
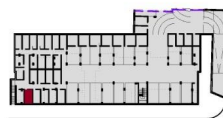






\* Without Contract Value/ Sin Valor Contractual

0 0.5 1 2 3  
ESCALA GRÁFICA

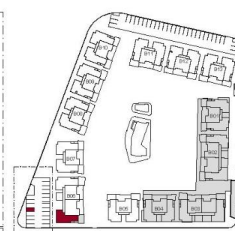
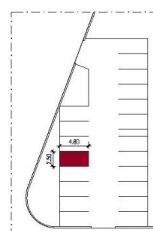
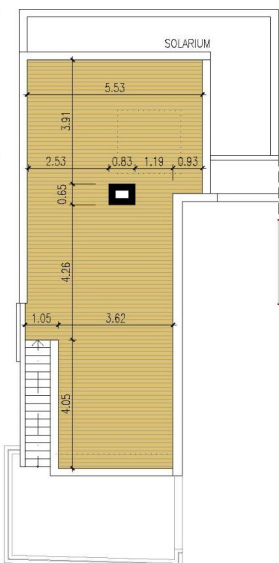
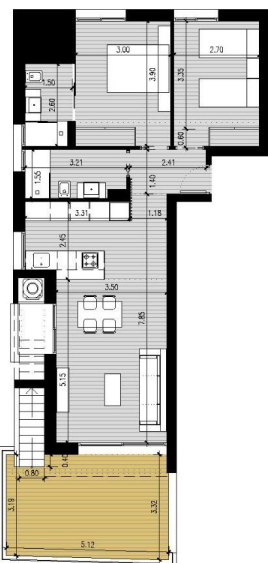


|                     |          |                                 |
|---------------------|----------|---------------------------------|
| SUPERFICIE VIVIENDA | 78.11 m2 | VIVIENDA 605<br>PLANTA 1- ÁTICO |
| SUPERFICIE TERRAZA  | 21.26 m2 |                                 |
| SUPERFICIE SOLARIUM | 66.38 m2 |                                 |

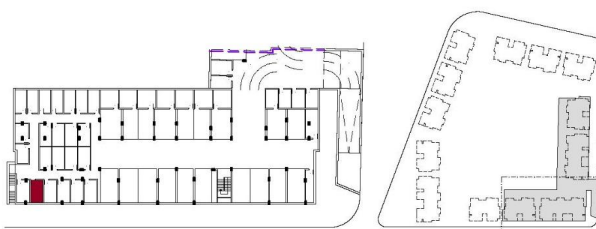


\* Without Contract Value/ Sin Valor Contractual

0 0.5 1 2 3  
ESCALA GRÁFICA



|                     |          |                                 |
|---------------------|----------|---------------------------------|
| SUPERFICIE VIVIENDA | 78.11 m2 | VIVIENDA 605<br>PLANTA 1- ÁTICO |
| SUPERFICIE TERRAZA  | 21.26 m2 |                                 |
| SUPERFICIE SOLARIUM | 66.38 m2 |                                 |



























*"Experience our experience - Because you deserve the best"*