

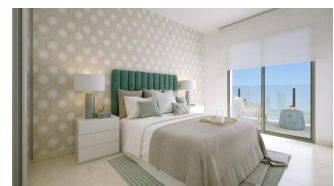
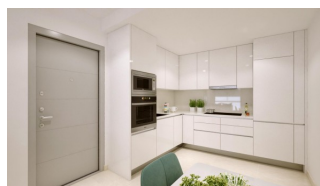
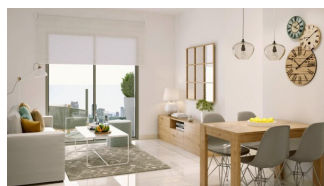
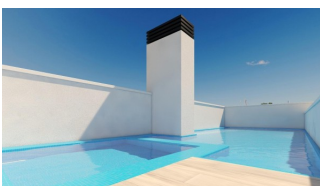


REF: # 12687



#### INFO

<b>PRICE:</b>	279.000 €
<b>PROPERTY TYPE:</b>	Apartment
<b>LOCATION:</b>	
<b>BEDROOMS:</b>	3
<b>Bathrooms:</b>	2
<b>Build:</b>	96 (m2)
<b>Plot:</b>	-
<b>Terrace:</b>	12 (m2)
<b>Year:</b>	-
<b>Floor:</b>	-
<b>Old price</b>	-



#### DESCRIPTION

New Build Apartments in Torrevieja, Just 150m from Playa del Cura Prime Location in Torrevieja, Close to Beaches and Amenities Experience coastal living at its best with these brand-new apartments and penthouses

in Torrevieja, located a mere 150 meters from Playa del Cura. These exclusive residences are nestled in a vibrant neighborhood with all essential amenities within reach, including shops, restaurants, and cafes. Perfectly positioned on Spain's Costa Blanca, Torrevieja offers residents a Mediterranean climate and relaxed lifestyle with easy access to both Alicante Airport (45 km) and Murcia Airport (65 km).

**Modern Design with Spacious Layouts and Quality Finishes** This new residential complex consists of 12 luxurious apartments and penthouses, offering 2 and 3-bedroom units designed for modern comfort. Each unit features an open-plan American-style kitchen that seamlessly flows into the living room, creating an ideal space for relaxation and entertainment. Bedrooms include fitted wardrobes with drawers, while bathrooms boast underfloor heating, high-quality fixtures, and shower enclosures. Large, double-glazed windows with thermal and acoustic insulation provide a quiet, temperature-controlled living environment, ensuring your home is a peaceful retreat.

**Premium Exterior and Energy-Efficient Features** Built with energy efficiency in mind, these apartments come with high-quality aluminum exterior carpentry with thermal break technology and automatic motorized shutters. Each unit is pre-installed for climate control through ducted air conditioning and heating, ensuring year-round comfort. For added security, all entrance doors are armored with secure locks, and interior doors are finished in white lacquer. Additionally, each unit is fitted with an energy-saving arothermal system for hot water, which significantly reduces energy consumption.

**Exclusive Rooftop Solarium with Pool** Residents of this modern complex can enjoy exclusive access to a beautiful rooftop solarium with a communal swimming pool, ideal for soaking up the sun and enjoying panoramic views of Torrevieja. The building's rooftop offers a serene escape and is the perfect place to relax with family or friends.

**Living in Torrevieja: A Blend of Culture and Nature** Torrevieja is known for its scenic coastline, beautiful beaches, and unique salt lagoons. The town's popular seafront promenades and the charming Museo del Mar y de la Sal reflect its fishing and salt-mining history. Just a short drive away, the Natural Park of Las Lagunas de La Mata-Torrevieja offers picturesque trails and two stunning saltwater lagoons, one pink and one green, for nature enthusiasts to explore.

**Start Your Coastal Life Today** Don't miss the chance to own a stylish new home in this exceptional location. Contact us today to schedule a viewing and discover everything these exclusive apartments in Torrevieja have to offer!

## VIEWS

- Panoramic views

## AIRCONDITIONING

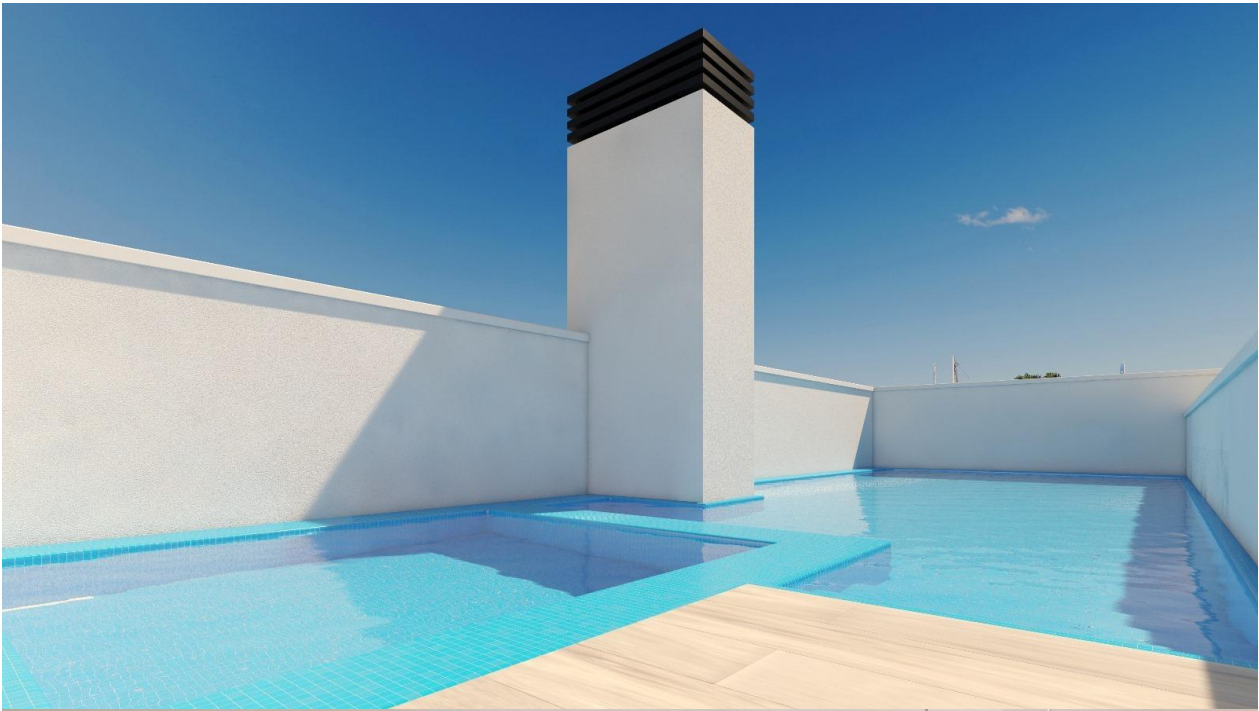
- Central airconditioning

## EXTRA

- Lift



















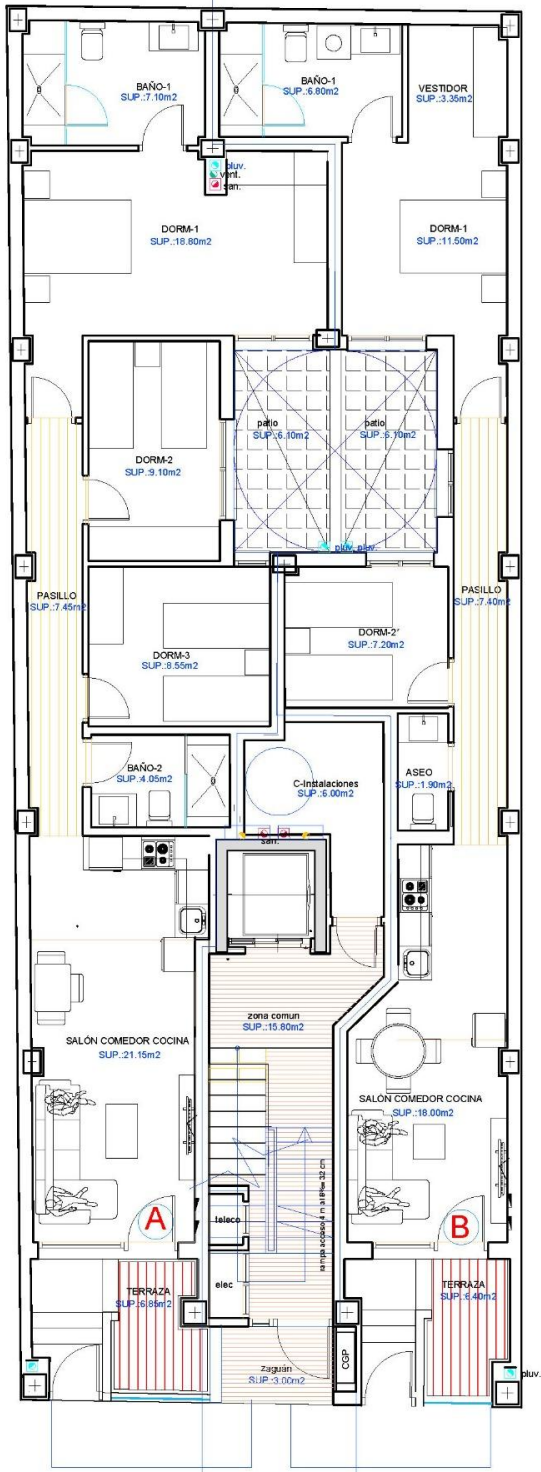




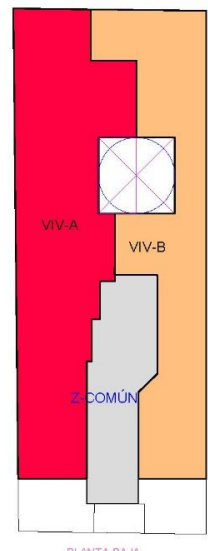






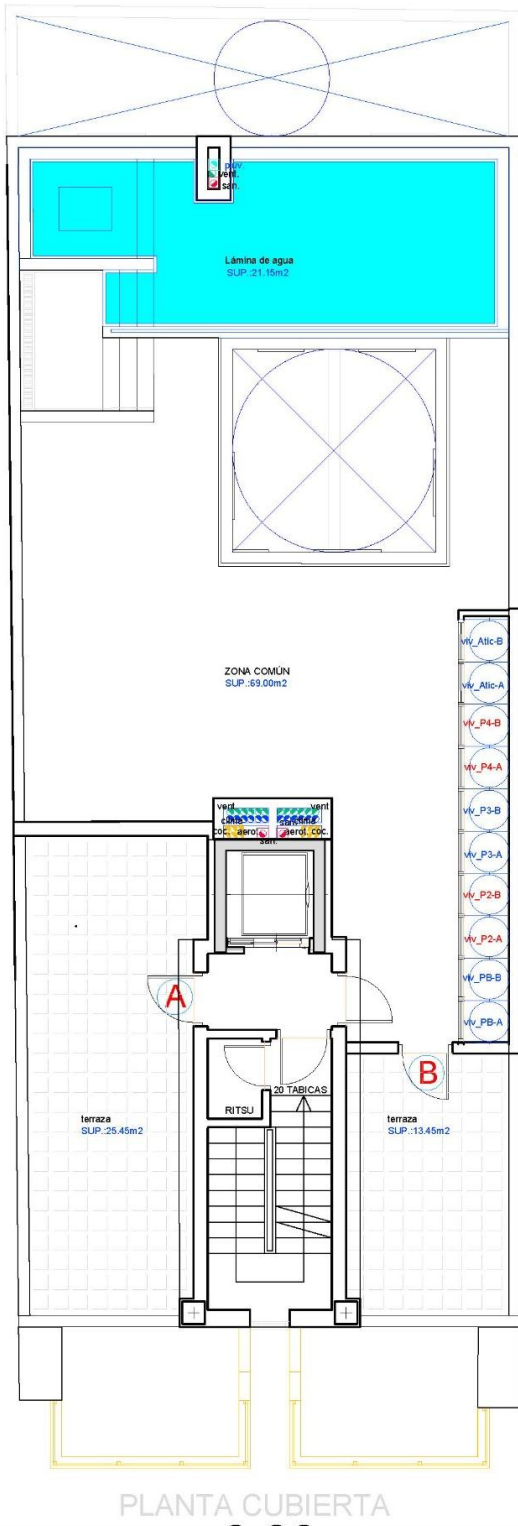


CUADRO DE SUPERFICIES		
SUPERFICIE VIVIENDA TIPO (PLANTA BAJA)		
	VIV-A	VIV-B
SALON COMEDOR COCINA	21,15 m <sup>2</sup>	18,00 m <sup>2</sup>
PASILLO	7,45 m <sup>2</sup>	7,40 m <sup>2</sup>
BAÑO-1	7,10 m <sup>2</sup>	6,80 m <sup>2</sup>
VESTIDOR	0,00 m <sup>2</sup>	3,35 m <sup>2</sup>
DORMITORIO-1	18,80 m <sup>2</sup>	11,50 m <sup>2</sup>
DORMITORIO-2	9,10 m <sup>2</sup>	7,20 m <sup>2</sup>
DORMITORIO-3	8,55 m <sup>2</sup>	0,00 m <sup>2</sup>
BAÑO-2	4,05 m <sup>2</sup>	1,90 m <sup>2</sup>
SUP. GALERIA/PATIO	6,10 m <sup>2</sup>	6,10 m <sup>2</sup>
SUP. TERRAZA-1	6,85 m <sup>2</sup>	6,40 m <sup>2</sup>
SUP. TERRAZA-2	0,00 m <sup>2</sup>	0,00 m <sup>2</sup>
<b>SUP. UTIL VIVIENDA</b>	<b>89,15 m<sup>2</sup></b>	<b>68,65 m<sup>2</sup></b>
<b>SUP. CONSTR. VIVIENDA (sin E.Comunes, terrazas 100%)</b>	<b>96,00 m<sup>2</sup></b>	<b>73,30 m<sup>2</sup></b>
<b>SUP. CONSTRUIDA COMUNES</b>	<b>13,15 m<sup>2</sup></b>	<b>9,68 m<sup>2</sup></b>
<b>SUPERFIVIE CONSTRUIDA TOTAL</b>	<b>109,15 m<sup>2</sup></b>	<b>82,98 m<sup>2</sup></b>

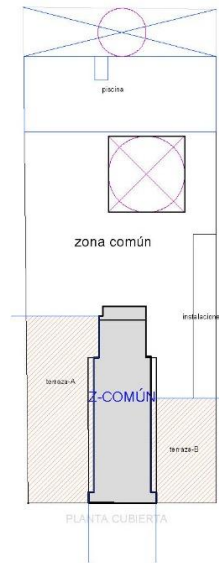


**PLANTA BAJA**





CUADRO DE SUPERFICIES SUPERFICIE VIVIENDA TIPO (ATICO)		
	VIV-A	VIV-B
SALON COMEDOR	24,70 m <sup>2</sup>	24,70 m <sup>2</sup>
PASILLO	6,90 m <sup>2</sup>	7,50 m <sup>2</sup>
BAÑO-1	3,60 m <sup>2</sup>	3,60 m <sup>2</sup>
DORMITORIO-1	13,35 m <sup>2</sup>	10,75 m <sup>2</sup>
DORMITORIO-2	7,10 m <sup>2</sup>	8,20 m <sup>2</sup>
DORMITORIO-3	9,10 m <sup>2</sup>	0,00 m <sup>2</sup>
BAÑO-2	4,85 m <sup>2</sup>	4,40 m <sup>2</sup>
SUP. GALERIA/PATIO	0,00 m <sup>2</sup>	0,00 m <sup>2</sup>
SUP. TERRAZA-1	8,05 m <sup>2</sup>	8,10 m <sup>2</sup>
SUP. TERRAZA-2	25,45 m <sup>2</sup>	13,45 m <sup>2</sup>
<b>SUP. ÚTIL VIVIENDA</b>	<b>103,10 m<sup>2</sup></b>	<b>80,70 m<sup>2</sup></b>
<b>SUP. CONSTR. VIVIENDA (sin E.Comunes, terrazas 100%)</b>	<b>116,73 m<sup>2</sup></b>	<b>103,08 m<sup>2</sup></b>
<b>SUP. CONSTRUIDA COMUNES</b>	<b>11,89 m<sup>2</sup></b>	<b>10,31 m<sup>2</sup></b>
<b>SUPERFICIE CONSTRUIDA TOTAL</b>	<b>128,62 m<sup>2</sup></b>	<b>113,39 m<sup>2</sup></b>



**PLANTA CUBIERTAS**











*"Experience our experience - Because you deserve the best"*