



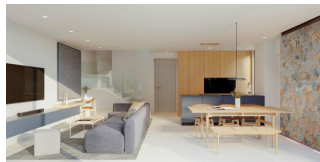
REF: # 12703

()



#### INFO

PRICE:	400.000 €
PROPERTY TYPE:	Villa
LOCATION:	()
BEDROOMS:	3
Bathrooms:	2
Build:	197 (m2)
Plot:	172 (m2)
Terrace:	16 (m2)
Year:	-
Floor:	-
Old price	-



#### DESCRIPTION

New Build Villas in Exclusive Gated Resort Santa Rosalia Lake and Life Resort near Alcazares, Near Mar Menor Beach Prime Location in the Heart of Murcia's Scenic Coastline Discover luxurious new-build villas in a private gated resort within the Murcia region, known for its exceptional golf courses and proximity to the Mar Menor Sea. Situated just 10 minutes from beautiful sandy beaches, these villas offer a perfect mix of coastal relaxation and leisure opportunities. Located near Los Alcázares, a vibrant seaside town known for water sports and beachside dining, this resort provides easy access to Murcia Airport, just 22 km away, and the historic city of Cartagena, only 15 km from the resort. Spacious and Modern Villas with Premium Features Each villa is thoughtfully designed across three floors, providing ample space and a comfortable layout. With 2 or 3 bedrooms, 2 bathrooms, these homes are ideal for families and couples alike. The open-plan kitchen flows seamlessly into the dining and living areas, creating a bright, airy atmosphere. Key features include fitted wardrobes, a private basement, optional solarium, and a private garden with an optional swimming pool and parking space. Luxury Amenities and High-Quality Finishes Each villa is crafted with high-end materials and features: A spacious basement Indoor-outdoor porcelain flooring with anti-slip treatment outdoors Pre-installation of ducted air conditioning Aerothermal heat pump system for hot water and electric radiant floor heating in bathrooms Stylish kitchens with paneled cabinets and built-in appliances, including a ceramic hob, extractor hood, integrated oven, and microwave LED lighting package and standard home automation system for modern living Electric shutters in the bedrooms Resort-Style Living with Unmatched Recreational Facilities This exclusive gated resort is designed around a vast 126,000 m<sup>2</sup> green space, offering walking and cycling

paths, sports facilities, paddle and tennis courts, a mini-golf course, dog parks, and leisure areas. At the heart of the resort is an impressive 17,000 m<sup>2</sup> crystal-clear lake with white sandy beaches, evoking a Caribbean ambiance in the heart of Murcia. Two islands within the lake feature a bar and beach chiringuitos for a relaxing retreat close to home. Close to Key Attractions and Points of Interest This strategic location offers easy access to nearby points of interest, including: Los Alcázares Beach: 4 km Murcia Airport: 22 km Cartagena: 15 km Surrounding golf courses for golf enthusiasts These new-build villas in Murcia are the ideal choice for those seeking luxury, privacy, and a blend of active and leisure-filled lifestyles, all within a resort that offers an unparalleled sense of community and tranquility.

**VIEWS**

- Panoramic views

**AIRCONDITIONING**

- Central airconditioning

**PARKING**

Parking no Cars: 1

---

**GARDEN AND  
TERRACES**

- Fenced
- Private garden













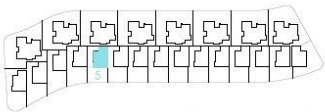




PLANTA PRIMERA



PLANTA BAJA



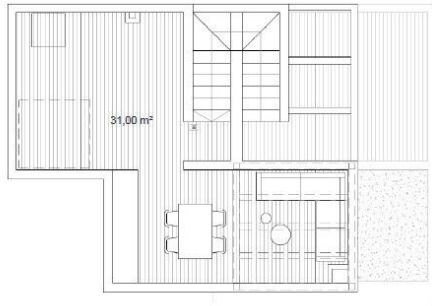
SURFACES

VILLA 05	172,50	m2
construction surface		
Ground floor	60,00	m2
First floor	41,00	
Basement	96,00	m2
TOTAL INTERIOR	197,00	m2
Outdoor spaces on the ground floor	112,50	m2
Terraces first floor	16,00	m2
TOTAL TERRACES	128,50	m2

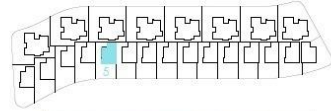
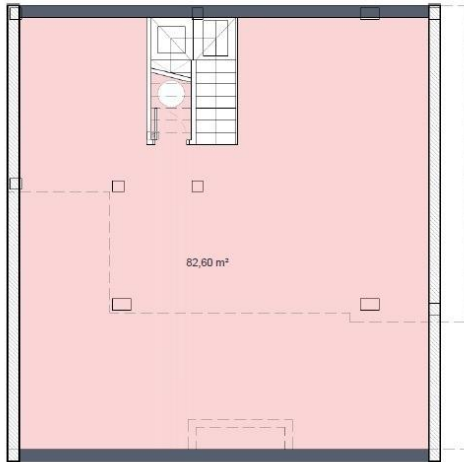
Documento de carácter informativo, no contractual. Puede sufrir variaciones por razones técnicas, legales o comerciales. El mobiliario y los electrodomésticos son decorativos y no están incluidos.  
This plan is for illustration purposes only and may be modified for technical, legal or commercial reasons. The furniture and appliances shown are purely decorative and are not included.



PLANTA SOLÁRIUM (opcional)



PLANTA SÓTANO



## SURFACES

VILLA 05	172,50	m2
construction surface		
Ground floor	60,00	m2
First floor	41,00	
Basement	96,00	m2
<b>TOTAL INTERIOR</b>	<b>197,00</b>	<b>m2</b>
Outdoor spaces on the ground floor	112,50	m2
Terraces first floor	16,00	m2
<b>TOTAL TERRACES</b>	<b>128,50</b>	<b>m2</b>

Documento de carácter informativo, no contractual. Puede sufrir variaciones por razones técnicas, legales o comerciales. El mobiliario y los electrodomésticos son decorativos y no están incluidos.  
This plan is for illustration purposes only and may be modified for technical, legal or commercial reasons. The furniture and appliances shown are purely decorative and are not included.









*"Experience our experience - Because you deserve the best"*