



REF: # 12755



INFO

PRICE: 310.000 €

PROPERTY TYPE: Apartment

LOCATION:

BEDROOMS: 2

Bathrooms: 2

Build: 72 (m2)

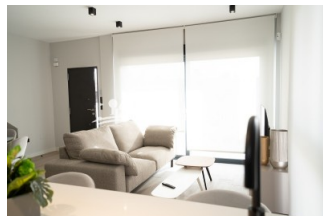
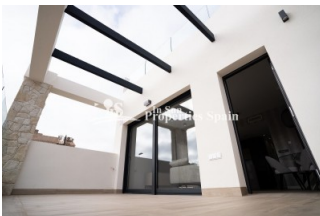
Plot: -

Terrace: 81 (m2)

Year:

Floor: -

Old price -



DESCRIPTION

New Build Development in Pilar de la Horadada - walking distance to all amenities! This 72m2 Top apartment consists of 2 bedrooms, 2 bathrooms, open plan kitchen/lounge/dining area and private 81m2 solarium with sea views! Thiar Village is a new development of Luxury Ground and Top floor apartments plus 2 detached houses with private garden and pool. It's located in Pilar de la Horadada, a short walk from a host of amenities and only a 20 minutes walk using the pedestrian and bicycle path called the "La Rambla" to the wonderful Blue flag beaches! The development is currently in construction with an expected completion date of March 2026, it will have lovely communal areas, including a swimming pool and most apartments will have a parking space. In the surroundings you will find several nice restaurants and in just a few minutes you can reach the beautiful beaches of Torre de la Horadada and its promenade. Within a short drive you can reach several golf courses such as Lo Romero Golf, as well as the Dos Mares or La Zenia Boulevard shopping centers. Both Murcia and Alicante airports are a 45km drive.

STYLE <ul style="list-style-type: none">• Modern	VIEWS <ul style="list-style-type: none">• Panoramic views	AIRCONDITIONING <ul style="list-style-type: none">• Central airconditioning	DISTANCE TO : <div>Beach : 2 Km</div> <div>Airport: 50 Km</div>
FURNITURE <ul style="list-style-type: none">• Not furnished	PARKING <div>Parking no Cars: 1</div>	FLOORING <ul style="list-style-type: none">• Tile floors• Stone floors	KITCHEN <ul style="list-style-type: none">• Open kitchen
GARDEN AND TERRACES <ul style="list-style-type: none">• Fenced• Communal Garden	EXTRA <ul style="list-style-type: none">• Built in wardrobes• Alarm• Reinforced door• Double glazed windows		













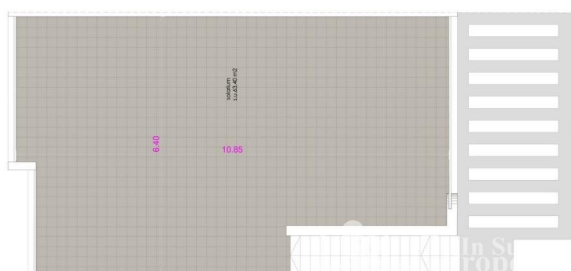






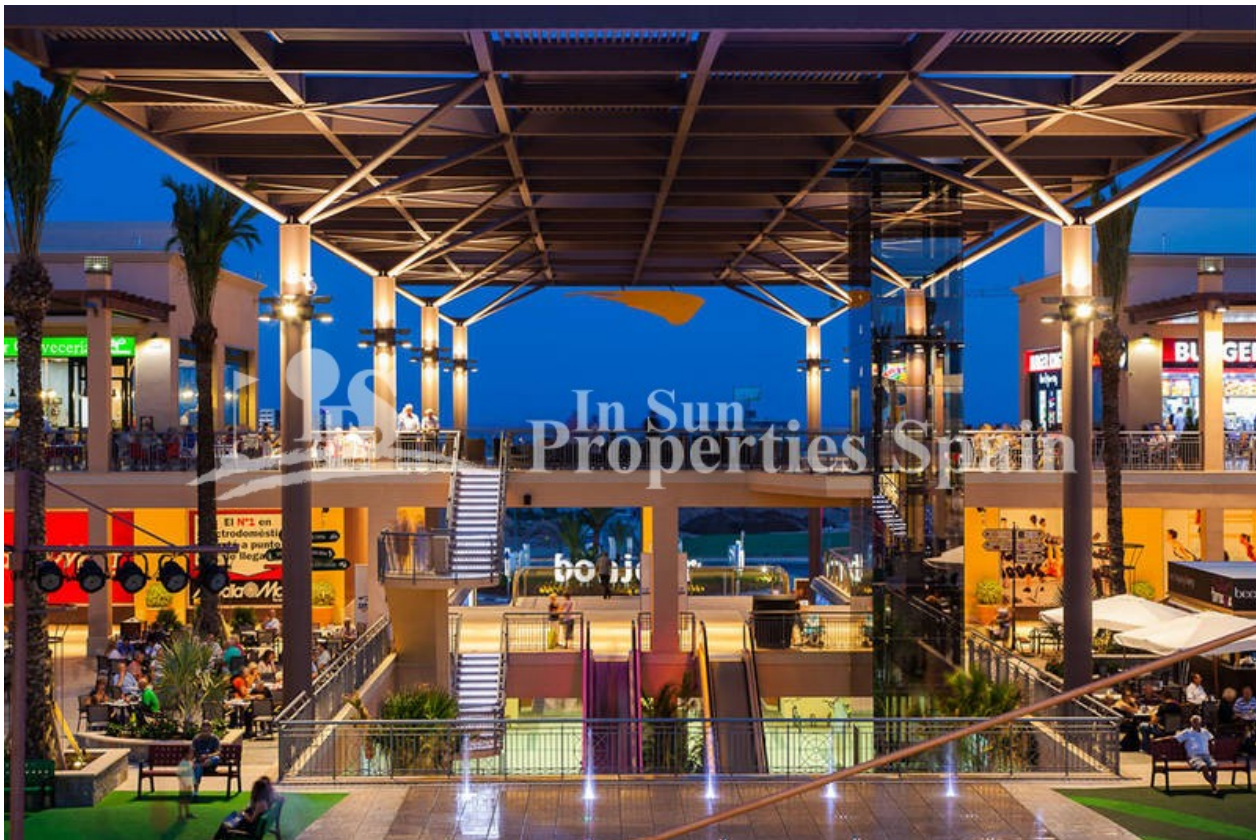






B1 TIPO 4-6-12-14-20-22	
MEDIANERA ALTA	
SUPERFICIES ÚTILES	SUPERFICIE
ESTANCIA	
SALON-COM-COCINA	35,51
DORMITORIO 1	11,45
DORMITORIO 2	9,23
BAÑO 1	3,51
BAÑO 2	3,50
GALERÍA	1,54
TERRAZA	18,16
TOTAL	104,17
SOLARIUM	63,40
SUPERFICIES CONSTRUIDAS	
VIVIENDA	72,00





"Experience our experience - Because you deserve the best"