



**In Sun  
Properties Spain**  
since 1999

REF: # 12800



#### INFO

**PRICE:** 260.000 €

**PROPERTY TYPE:** Apartment

#### LOCATION:

**BEDROOMS:** 2

**Bathrooms:** 2

**Build:** 70 (m2)

**Plot:** 21 (m2)

**Terrace:** 36 (m2)

**Year:** -

**Floor:** -

**Old price** -



#### DESCRIPTION

Bungalows of New Construction in San Miguel de Salinas - Nature, Golf and Comfort Privileged Location in a Natural Environment This exclusive residential of newly built bungalows is located less than 3 km from San Miguel de Salinas, in a quiet area surrounded by nature and with impressive unobstructed views. Its excellent location allows you to enjoy the tranquillity without renouncing to the proximity of all the services. Just 7 km away are the beaches of Orihuela Costa and the city of Torrevieja, where you can enjoy a wide range of leisure, gastronomy and shops. Modern Design and Unobstructed Views The properties are designed in a modern style and have high quality interior and exterior finishes. You can choose between: Ground floors with private garden, ideal for those looking to enjoy the outdoors. Top floors with private solarium, perfect for sunbathing and relaxing with panoramic views. In addition, all homes include allocated parking space. Communal Areas for Maximum Comfort The development offers a beautiful communal swimming pool, surrounded by green areas, perfect for enjoying the Mediterranean climate. The natural environment encourages a healthy lifestyle, away from stress and pollution, in an enclave that resembles a true paradise. Proximity to the Best Golf Courses San Miguel de Salinas is an ideal destination for golf lovers. Less than 4 km away are three of the most prestigious courses on the Costa Blanca: Villamartin Golf - 3.5 km. Las Colinas Golf & Country Club - 4 km. Campoamor Golf - 4 km. Connected to the Main Points of Interest This residential is in a strategic location with easy access to: San Miguel de Salinas - 3 km. Orihuela Costa Beaches - 7 km. Torrevieja - 7 km. La Zenia Boulevard Shopping Centre - 10 km. Alicante Airport - 55 km. Murcia Airport (Corvera) - 50 km. Secure your home in San Miguel de Salinas If you are looking for a home on the Costa Blanca where you can enjoy tranquillity, nature

and golf, this residential is your best option. Contact us today for more information and to arrange a viewing.

<b>STYLE</b> <ul style="list-style-type: none"><li>• Modern</li><li>• Contemporary</li></ul>	<b>VIEWS</b> <ul style="list-style-type: none"><li>• Panoramic views</li></ul>	<b>AIRCONDITIONING</b> <ul style="list-style-type: none"><li>• Central airconditioning</li></ul>	<b>DISTANCE TO :</b> <div>Beach : 7 Km</div> <div>Airport: 50 Km</div> <div>Town center : 3 Km</div>
<b>ORIENTATION</b> <div>South west</div>	<b>PARKING</b> <div>Garage no Cars : 1</div> <div>Parking no Cars: 1</div>	<b>MAIN LIVING AREA</b> <ul style="list-style-type: none"><li>• Bathroom en-suite</li></ul>	<b>FLOORING</b> <ul style="list-style-type: none"><li>• Tile floors</li><li>• Stone floors</li></ul>
<b>KITCHEN</b> <ul style="list-style-type: none"><li>• Open kitchen</li><li>• Equipped kitchen</li><li>• Granite countertop</li></ul>	<b>GARDEN AND TERRACES</b> <ul style="list-style-type: none"><li>• Covered terrace</li><li>• Open terrace</li><li>• Fruit trees</li><li>• Landscaped</li><li>• Fenced</li><li>• Stone walls</li><li>• Private garden</li><li>• Communal Garden</li></ul>	<b>HEATING</b> <ul style="list-style-type: none"><li>• Central electric heating</li></ul>	<b>EXTRA</b> <ul style="list-style-type: none"><li>• Built in wardrobes</li><li>• Reinforced door</li><li>• Double glazed windows</li></ul>















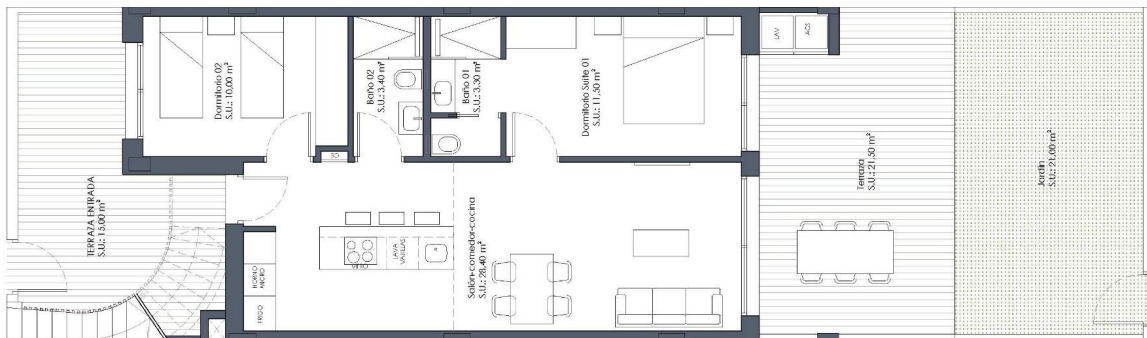












VIVIENDA CENTRAL PB	
SUPERFICIES ÚTILES	
Salón-Comedor-Cocina	28,40 m <sup>2</sup>
Dormitorio suite 01 con baño	14,80 m <sup>2</sup>
Dormitorio 02	10,00 m <sup>2</sup>
Baño 02	3,40 m <sup>2</sup>
SUPERFICIE CONSTRUIDA VIVIENDA	
SUPERFICIE TERRAZA	36,50 m <sup>2</sup>
SUPERFICIE JARDIN	21,00 m <sup>2</sup>



*"Experience our experience - Because you deserve the best"*