

REF: # 12834



#### INFO

**PRICE:** 269.900 €

**PROPERTY TYPE:** Apartment

#### LOCATION:

**BEDROOMS:** 2

**Bathrooms:** 2

**Build:** 75 (m2)

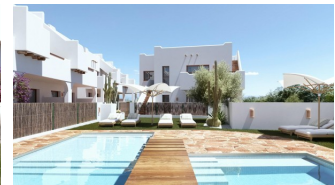
**Plot:** 15 (m2)

**Terrace:** 76 (m2)

**Year:** -

**Floor:** -

**Old price** -



#### DESCRIPTION

Exclusive New Build Bungalows in Pilar de la Horadada - Privileged Location A Unique Residential to Enjoy the Mediterranean Welcome to this exclusive development of 16 bungalows and one corner townhouse with 2 and 3 bedrooms, designed for those looking for quality of life and comfort on the Costa Blanca. Located just a short walk from the centre of Pilar de la Horadada, this modern complex offers a tranquil setting, with all amenities within easy reach. The homes are designed to maximise the wellbeing of their owners: Ground floors with front garden and rear patio. Top floors with private terrace and solarium with spectacular views. A corner townhouse, with more space and privacy. The residential has a large communal swimming pool surrounded by green areas, ideal for relaxing under the Mediterranean sun. Modern Design and High Quality Finishes Each property has been carefully designed to offer luminosity, functionality and contemporary style. Armoured front door for added security. Open concept kitchen, integrated into the living room for convenience. Modern bathrooms with shower trays and installation of tempered glass screens. Pre-installation of air conditioning in living room and bedrooms. Hot water production by individual fan heater for greater energy efficiency. Upper floors with pre-installation of outdoor kitchen in the solariums. In addition, the development has a parking area for bicycles and a private parking space per property. Pilar de la Horadada - A Place to Live All Year Round Located in the province of Alicante, Pilar de la Horadada is an ideal destination for those looking to combine tranquillity, nature and first class services. Its beautiful beaches, such as Playa de las Higuericas, are just a few minutes away, offering golden sand crystal clear Mediterranean waters. This development enjoys an unbeatable location, with access to supermarkets, shops, restaurants and leisure facilities all within walking distance. The area also boasts hiking trails, cycle paths and a wide range of sports facilities. Key Distances to Main Points of Interest Torre de la

Horadada Beach - 3 km (5 min drive). Lo Romero Golf Course - 5 km (10 min drive). La Zenia Boulevard Shopping Centre - 15 km (15 min drive). Corvera Airport (Murcia) - 40 km (40 min drive). Alicante Airport - 55 km (55 min drive). Reserve your Costa Blanca Property Today Don't miss the opportunity to purchase a brand new property in an unbeatable location. Contact us today for more information and to arrange a viewing.

## VIEWS

- Panoramic views

## AIRCONDITIONING

- Central airconditioning

## PARKING

Parking no Cars: 1

---

## GARDEN AND TERRACES

- Fenced



PROPERTY GALLERY

























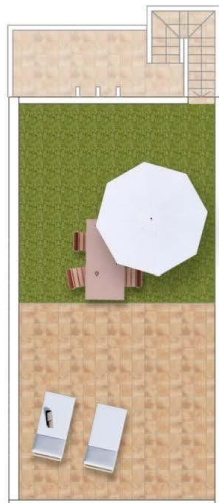




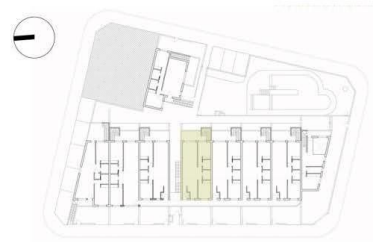




Planta primera / First floor



Planta solarium / Topfloor



**VIVIENDA PLANTA PRIMERA - 1D:**  
SUPERFICIE ÚTIL

Salón- Comedor- Cocina.....	34,69 m <sup>2</sup>
Entrada.....	3,03 m <sup>2</sup>
Dormitorio 1.....	10,59 m <sup>2</sup>
Dormitorio 2.....	9,56 m <sup>2</sup>
Baño 1.....	3,20 m <sup>2</sup>
Baño 2.....	3,20 m <sup>2</sup>

TOTAL SUPERFICIE ÚTIL.....64,27 m<sup>2</sup>

Terraza.....	8,95 m <sup>2</sup>
Solarium.....	68,02 m <sup>2</sup>

SUPERFICIE CONSTRUIDA VIVIENDA.....75,63 m<sup>2</sup>

**NOTA:**  
Las plantas quedan sujetas a posibles modificaciones de carácter técnico, en función del desarrollo del proyecto y de la obra, según indicaciones de la dirección facultativa. El simulacro también reflejado tiene únicamente carácter ilustrativo. Los dimensionamientos que se representan en esta planta y en su leyenda son aproximados; los definitivos serán los que resulten de la ejecución de la obra. De hecho, entrega de la obra solo con el mobiliario y electrodomésticos que constan en la memoria de cálculo. El mobiliario de la cocina y la disposición de los armarios pueden sufrir ligeros variaciones en función del montaje definitivo.





Planta baja / Ground floor

NOTA:  
 Los planos quedan sujetos a posibles modificaciones de carácter técnico, en función del desarrollo del proyecto y de la obra, según indicaciones de la dirección facultativa. El amueblamiento reflejado tiene únicamente fines decorativos. Las dimensiones que se aparecen en este plano y en su leyenda son aproximadas; las definitivas serán las que resulten de la ejecución de la obra. Se hace entrega de la obra solo con el mobiliario y electrodomésticos que consten en la memoria de cantidades. El mobiliario de la cocina y la disposición de los sanitarios puede sufrir ligeras variaciones en función del montaje definitivo.

*"Experience our experience - Because you deserve the best"*