



REF: # 12851

()



INFO

PRICE: 384.600 €

PROPERTY TYPE: Apartment

LOCATION: ()

BEDROOMS: 3

Bathrooms: 2

Build: 81 (m2)

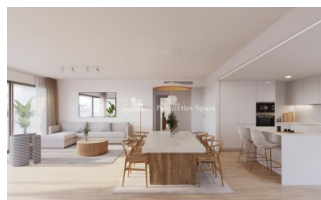
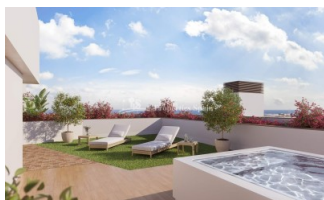
Plot: -

Terrace: 61 (m2)

Year:

Floor: -

Old price -



DESCRIPTION

NEW BUILD APARTMENTS IN ALICANTE CITY - 1KM from the beach Elegant design apartments with 2, 3 and 4 bedrooms with garage and storage room located 10 minutes walk from the city centre. Everything you need within your reach. This building has spectacular communal areas on the rooftop, unique in the city, with incredible panoramic view over the Mediterranean sea, you will enjoy a swimming pool, green areas, social space, gym and rooftop solarium with sunbathing areas. Located in the middle of the Costa Blanca, Alicante is one of the most important tourist destinations in the Spanish east coast. The many golf courses, along with the tranquil waters of the Mediterranean Sea, are part of the appeal of this beautiful harbour city, which sits at the foot of the Castle of Santa Barbara, a silent witness to the numerous civilisations to have settled here. The coastline is, without a doubt, the favorite recreational spot for the people of Alicante. The Explanada de España promenade, located across from the port, is a lively boulevard dotted with terraces and pavement cafes.

STYLE

- Modern
- Contemporary

VIEWS

- Panoramic views

DISTANCE TO :

Beach : 2 Km

Airport: 10 Km

FURNITURE

- Not furnished

PARKING

Parking no Cars: 2

KITCHEN

- Open kitchen

GARDEN AND TERRACES

- Fenced
- Communal Garden

EXTRA

- Built in wardrobes
- Alarm
- Reinforced door
- Double glazed windows
- Lift

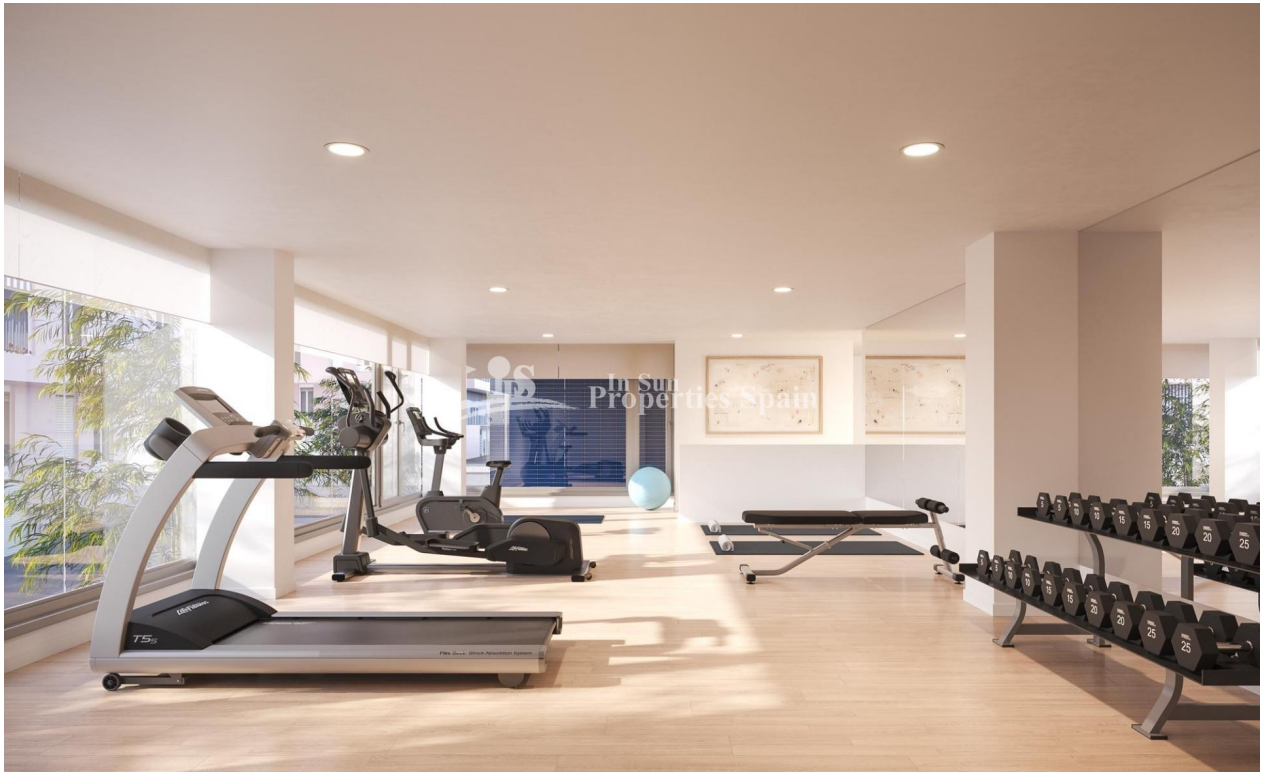












El presente plano comercial, que incluye una parte gráfica y datos relativos a superficies, puede ser objeto de modificaciones ordenadas por los organismos públicos competentes y/o exigencias técnicas o jurídicas, siempre y cuando estén justificadas y no supongan alteraciones sustanciales. El mobiliario mostrado no está incluido y el equipamiento del inmueble será el indicado en la correspondiente memoria de calidades.

CERTIFICACIÓN EN TRÁMITE

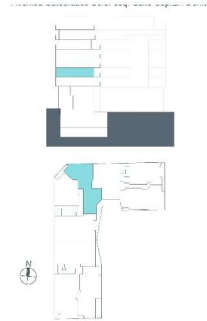
Esc. 2 P02-B



Superficies:

Vivienda 3d

Superficie útil interior	89.97 m ²
Superficie útil terrazas	11.41 m ²
Superficie construida interior	103.11 m ²
Superficie construida incluidas ZZCC	123.29 m ²



V01









"Experience our experience - Because you deserve the best"