

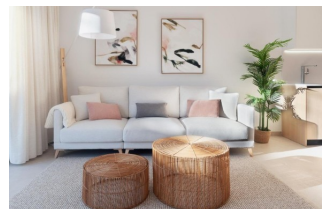
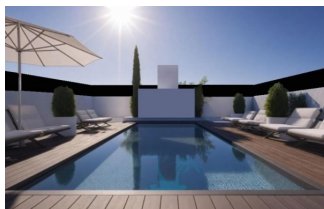


REF: # 13011



INFO

PRICE:	276.000 €
PROPERTY TYPE:	Apartment
LOCATION:	
BEDROOMS:	2
Bathrooms:	2
Build:	69 (m2)
Plot:	16 (m2)
Terrace:	13 (m2)
Year:	-
Floor:	-
Old price	-



DESCRIPTION

New Build Bungalows in San Pedro del Pinatar – Luxury and Nature by the Sea Prime Location Near Beaches and Nature Reserve Discover an exclusive residential complex of new build bungalows located in one of the most privileged areas of San Pedro del Pinatar, Murcia. Just 1.8 km from the beaches of the Mediterranean Sea and only 500 metres from the protected Salinas y Arenales Regional Park, this development offers a unique lifestyle surrounded by nature, tranquillity and all essential services. The complex sits in a peaceful residential neighborhood facing a large park, with easy walking access to supermarkets, shops, cafés, the town centre, and the local bus station, providing excellent connections to nearby towns such as Torrevieja and Cartagena.

Modern Mediterranean Living – Bungalows with Garden or Solarium This boutique development offers 2 and 3 bedroom bungalows with two distinct layouts: Ground floor homes with private gardens Top floor homes with spacious private solariums Each property is designed to maximize comfort, natural light, and open spaces, ideal for both permanent living and holiday retreats. All homes include a private parking space and storage room, and enjoy access to a large communal swimming pool and a fully equipped gym. As an optional upgrade, residents may add a private swimming pool, further enhancing the exclusivity and enjoyment of outdoor living.

High-Quality Features and Customization Options These new build bungalows are built to the highest standards, offering: Aluminium windows with thermal break and electric shutters for comfort and energy efficiency Underfloor heating in bathrooms for year-round warmth Pre-installation of ducted air conditioning throughout the home Modern kitchens with high-end finishes and options to personalise colours and materials Spacious, light-filled interiors with functional layouts and optimal orientation

A Town That Offers More San Pedro del Pinatar is

a coastal gem on the Costa Cálida, nestled between the Mar Menor and the Mediterranean Sea. It is known for its unique salt flats, sandy beaches, and traditional fishing heritage. The area also features: Therapeutic mud baths on the shoreline of the Mar Menor Family-friendly beaches with calm, shallow waters Natural walking trails for birdwatching and outdoor activities Vibrant local markets, cultural events, and excellent restaurants Proximity to airports: Murcia International Airport at 35 km and Alicante Airport at 75 km Golf courses within 10 to 15 km, including Lo Romero Golf and Roda Golf Resort Shopping centres like Dos Mares just 3 km away Secure Your Mediterranean Dream Today These new build bungalows offer the perfect blend of modern design, exceptional location, and quality finishes. Whether you are looking for a permanent home, holiday property or investment opportunity, this is your chance to enjoy the Mediterranean lifestyle in San Pedro del Pinatar. Contact us now to request more information or arrange a viewing.

VIEWS

- Panoramic views

**GARDEN AND
TERRACES**

- Fenced
- Private garden

AIRCONDITIONING

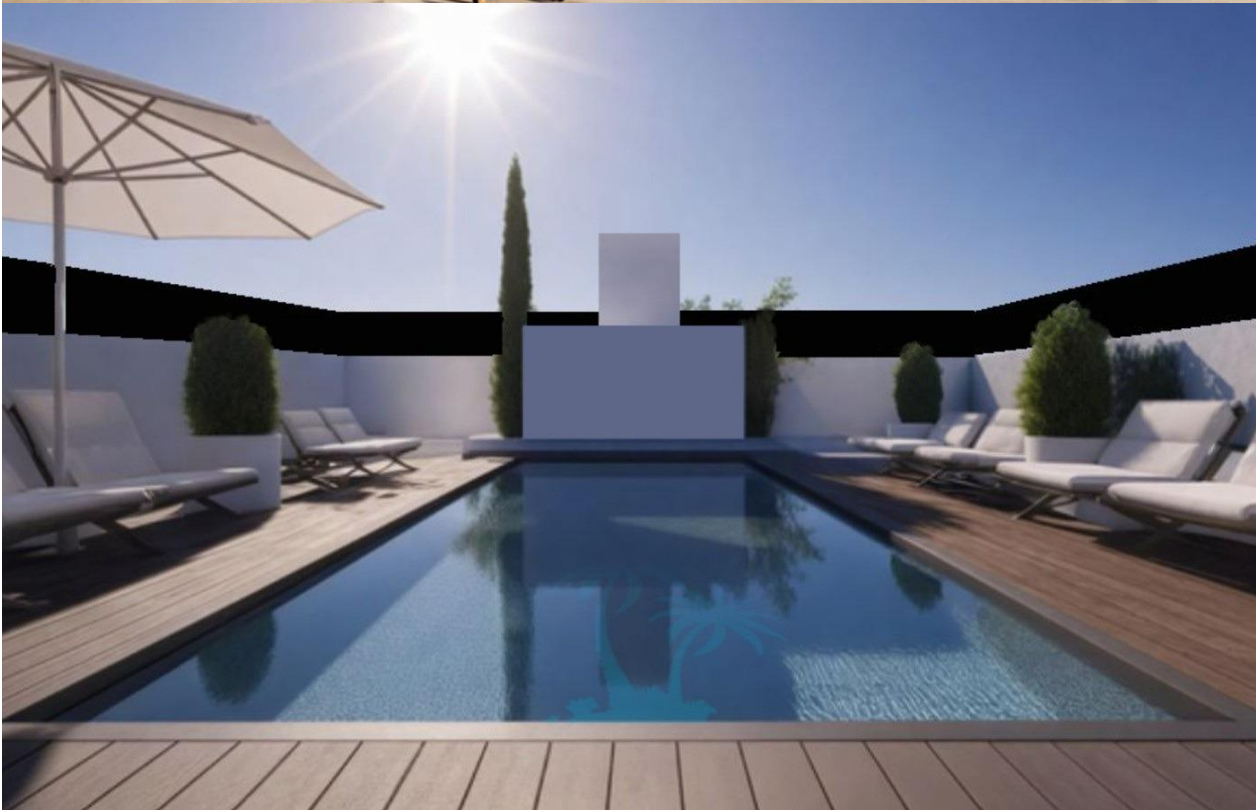
- Central airconditioning

PARKING

Parking no Cars: 1

MAIN LIVING AREA

- Gym











PLANO PLANTA BAJA / GROUND FLOOR PLAN



Tipo B

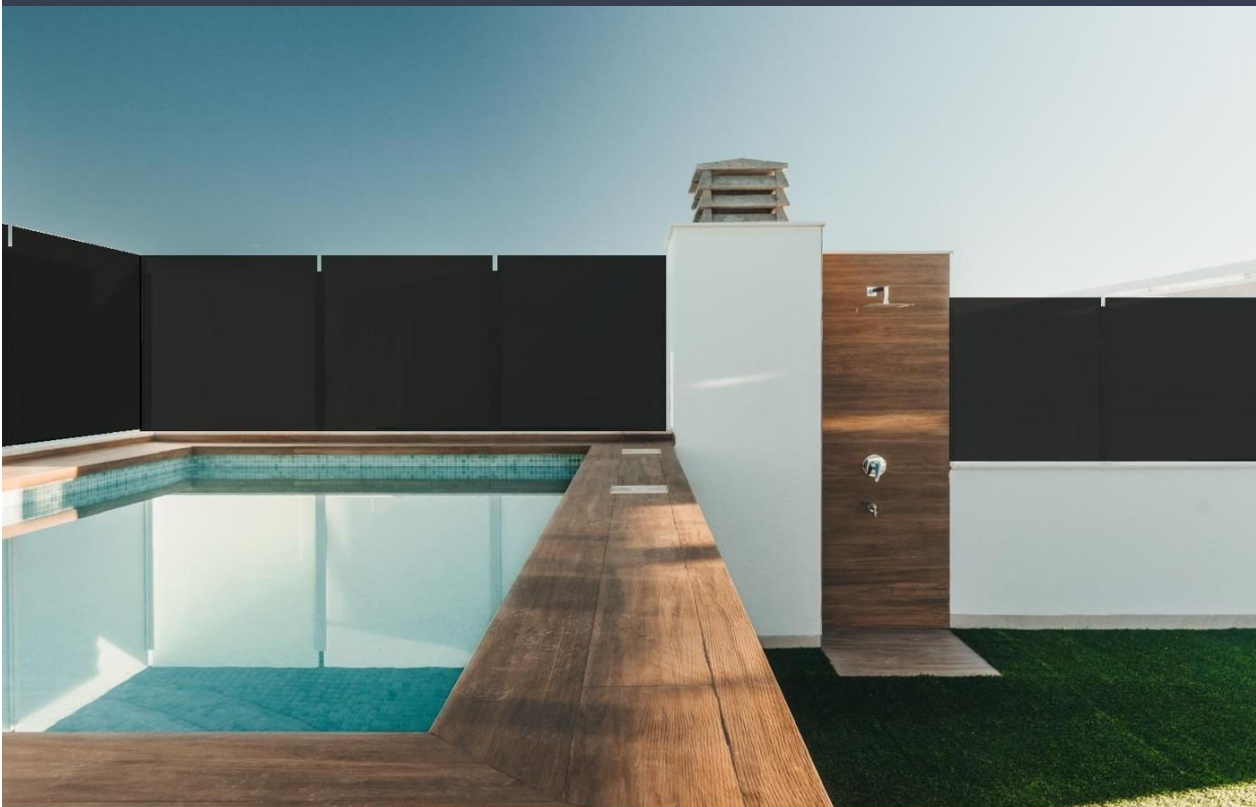
- 2 Dormitorios
- 2 Baños
- Garaje
- Trastero

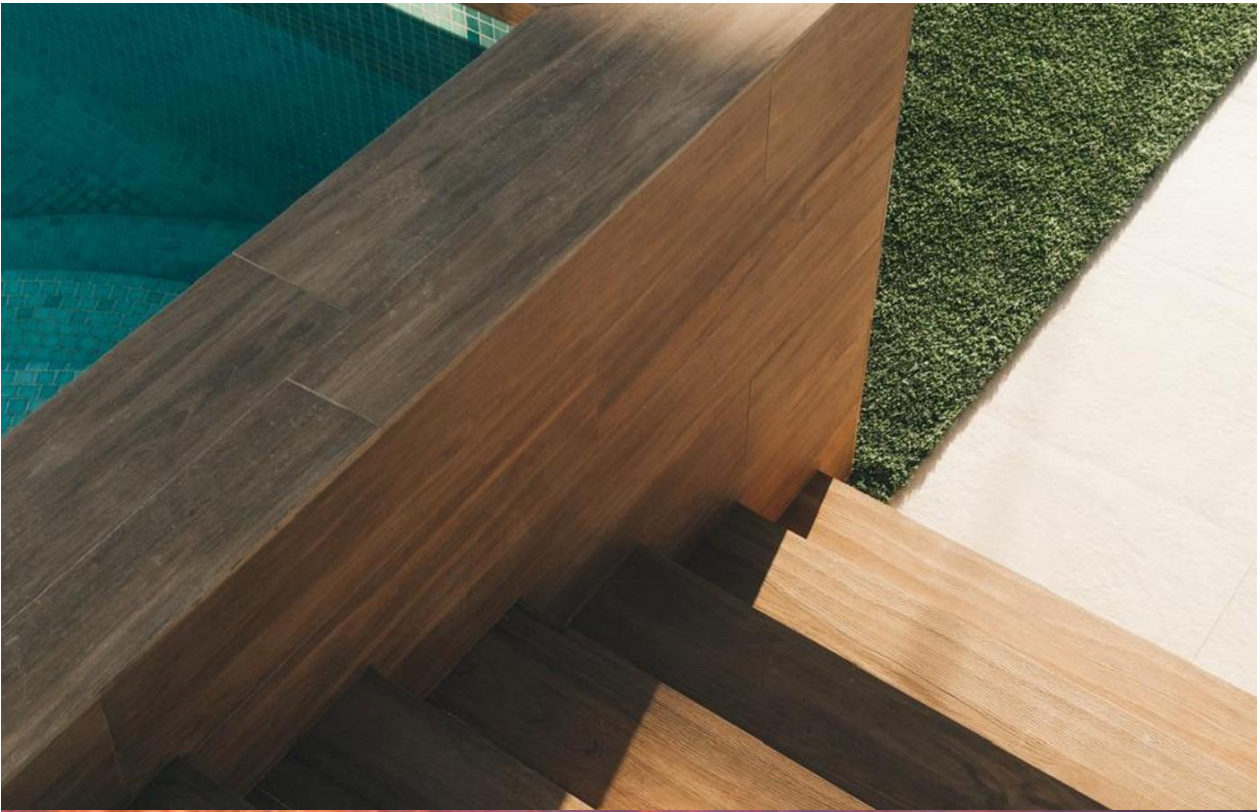
Type B

- 2 Bedrooms
- 2 Bathrooms
- Garage
- Storage room



Contacto
Contact





"Experience our experience - Because you deserve the best"