



REF: # 3525

()



#### INFO

**PRICE:** 199.000 €

**PROPERTY TYPE:** Townhouse

**LOCATION:** ()

**BEDROOMS:** 2

**Bathrooms:** 2

**Build:** 122 (m2)

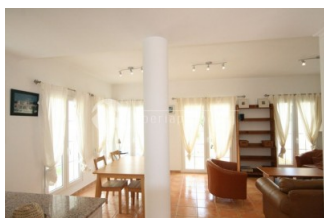
**Plot:** 162 (m2)

**Terrace:** -

**Year:** 2005

**Floor:** 2

**Old price** -



#### DESCRIPTION

Semi detached house in a new development completed in 2005, situated in a quiet location close to the centre of Calpe with fantastic views of the town and sea. Built in the typical Mediterranean style, the ground floor consists of an entrance hall, guests WC, open kitchen with breakfast bar and a large living- and dining area with access to the covered terrace. The first floor consists of 2 bedrooms and 2 large bathrooms, one en-Suite. Both the bedrooms have access to a balcony with fantastic views. The house has a private garden with a large terrace, and a parking, the garden with direct access to the beautiful communal swimming pool and garden area. Furnishings and fittings Built to the highest standard, offering PVC windows with "lattice" design, air conditioning and heating, and with an automatic entrance gate, and house safe for security. The house will be sold fully furnished, including white goods.

<b>STYLE</b>	<b>VIEWS</b>	<b>AIRCONDITIONING</b>	<b>DISTANCE TO :</b>
<ul style="list-style-type: none"><li>Mediterranean</li></ul>	<ul style="list-style-type: none"><li>Panoramic views</li><li>Sea views</li><li>Mountain views</li></ul>	<ul style="list-style-type: none"><li>Central airconditioning</li></ul>	Beach : 1 Km
			Airport: 70 Km
			Town center : 1 Km
<b>ORIENTATION</b>	<b>FURNITURE</b>	<b>PARKING</b>	<b>FLOORING</b>
South	<ul style="list-style-type: none"><li>Furnished</li></ul>	Parking no Cars: 2	<ul style="list-style-type: none"><li>Tile floors</li></ul>
<b>KITCHEN</b>	<b>GARDEN AND TERRACES</b>	<b>HEATING</b>	<b>EXTRA</b>
<ul style="list-style-type: none"><li>Closed kitchen</li><li>Equipped kitchen</li><li>Granite countertop</li></ul>	<ul style="list-style-type: none"><li>Open terrace</li><li>Exterior lights</li><li>Automatic watering system</li><li>Palm trees</li><li>Landscaped</li><li>Fenced</li><li>Stone walls</li><li>Communal Garden</li></ul>	<ul style="list-style-type: none"><li>Fireplace wood</li></ul>	<ul style="list-style-type: none"><li>Built in wardrobes</li><li>Reinforced door</li><li>Double glazed windows</li><li>Door bell with camera</li><li>Satellite TV</li><li>Internet</li></ul>





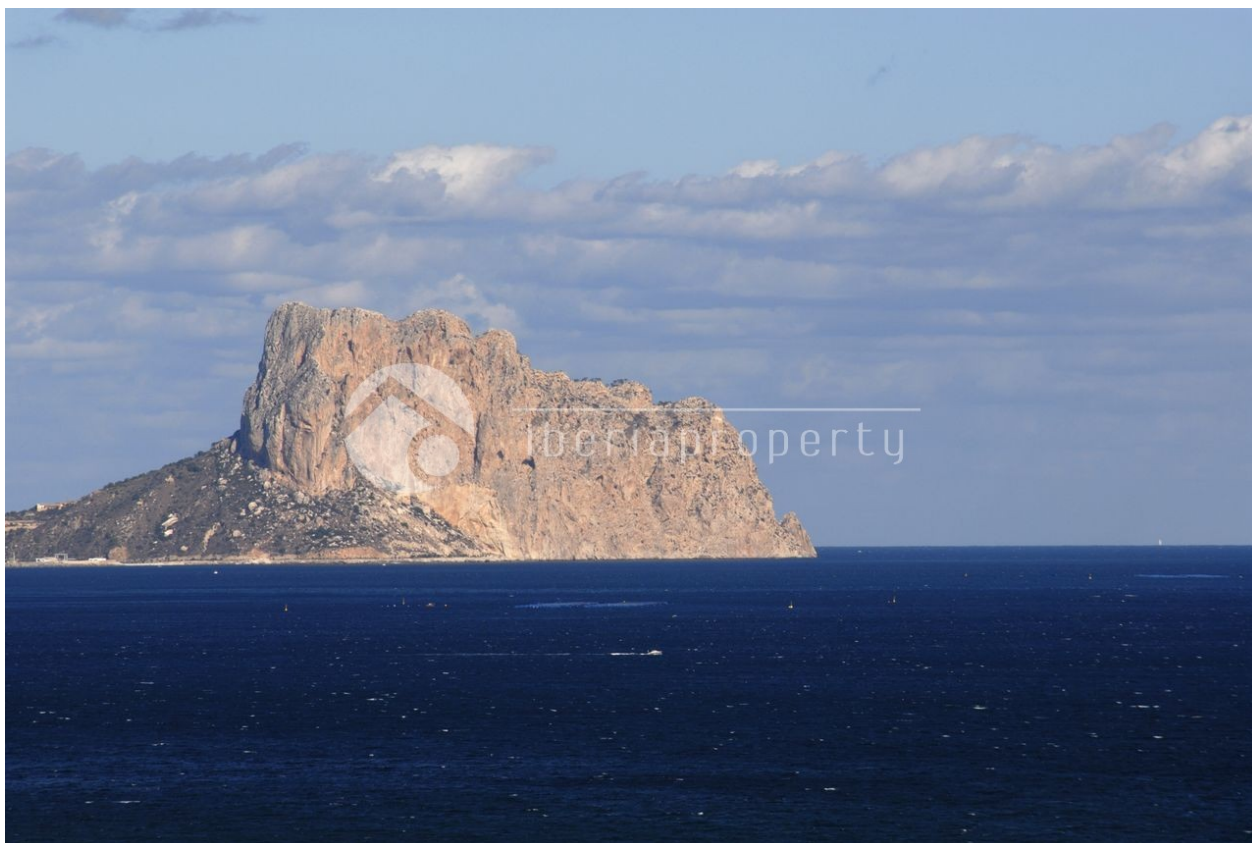












*"Experience our experience - Because you deserve the best"*