



REF: # 3871

()



#### INFO

**PRICE:** 279.000 €

**PROPERTY TYPE:** Villa (Semi detached)

**LOCATION:** ()

**BEDROOMS:** 3

**Bathrooms:** 3

**Build:** 128 (m2)

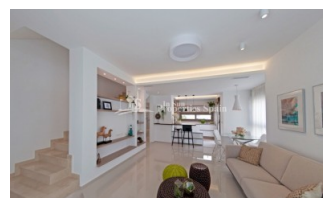
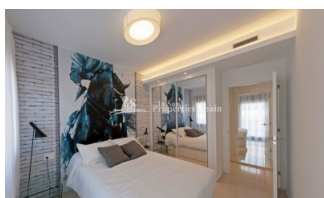
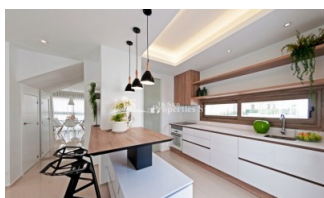
**Plot:** -

**Terrace:** 29 (m2)

**Year:**

**Floor:** -

**Old price** -



#### DESCRIPTION

Last available corner Townhouse Key Ready in APRIL 2018 at RESIDENCIAL ATEKA, DONA PEPA. These NEW modern, luxury south/west facing 3 bedroom, 3 bathroom Townhouse facing the community pool, located in a lovely gated community with private parking and 2 communal swimming pools near to the Golf course. 3 Bedroom, 3 Bathroom IVORY model Townhouses of 128m2, benefit from a 50m2 roof solarium and minimum 80m2 garden. Doña Pepa is a modern urbanisation belonging to Ciudad Quesada and has all the amenities which include supermarkets, bars, hotel and shops as well as a bank. Ciudad Quesada town centre is a ten minute walk from Doña Pepa. In Ciudad Quesada itself you will find international supermarkets, restaurants, banks, a medical centre as well as a water park. The property is ideally located if you are a golf enthusiast, with La Marquesa Golf Club just a five minute drive away. The nearest beaches are at Guardamar/Campomar and La Mata ten minutes drive away. Nearest Airports: San Javier (Murcia) - Approx 30 minute drive Alicante Airport - Approx 30 minute drive

<b>STYLE</b>	<b>VIEWS</b>	<b>AIRCONDITIONING</b>	<b>DISTANCE TO :</b>
<ul style="list-style-type: none"><li>• Modern</li></ul>	<ul style="list-style-type: none"><li>• Panoramic views</li></ul>	<ul style="list-style-type: none"><li>• Central airconditioning</li></ul>	Beach : 8 Km Airport: 40 Km Town center : 1 Km
<b>ORIENTATION</b>	<b>FURNITURE</b>	<b>PARKING</b>	<b>FLOORING</b>
South west	<ul style="list-style-type: none"><li>• Not furnished</li></ul>	Parking no Cars: 1	<ul style="list-style-type: none"><li>• Tile floors</li><li>• Stone floors</li></ul>
<b>KITCHEN</b>	<b>GARDEN AND TERRACES</b>	<b>HEATING</b>	<b>EXTRA</b>
<ul style="list-style-type: none"><li>• Open kitchen</li><li>• Equipped kitchen</li><li>• Granite countertop</li></ul>	<ul style="list-style-type: none"><li>• Covered terrace</li><li>• Open terrace</li><li>• Exterior lights</li><li>• Automatic watering system</li><li>• Palm trees</li><li>• Fenced</li><li>• Stone walls</li><li>• Electric gate</li><li>• Private garden</li><li>• Communal Garden</li></ul>	<ul style="list-style-type: none"><li>• Floor heating bathrooms</li></ul>	<ul style="list-style-type: none"><li>• Built in wardrobes</li><li>• Double glazed windows</li></ul>

























*"Experience our experience - Because you deserve the best"*