

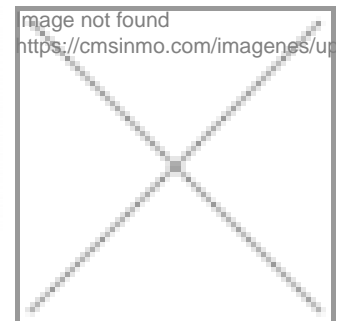


REF: # 3931



#### INFO

<b>PRICE:</b>	146.900 €
<b>PROPERTY TYPE:</b>	Apartment
<b>LOCATION:</b>	
<b>BEDROOMS:</b>	2
<b>Bathrooms:</b>	2
<b>Build:</b>	69 (m2)
<b>Plot:</b>	-
<b>Terrace:</b>	80 + 11 (m2)
<b>Year:</b>	
<b>Floor:</b>	-
<b>Old price</b>	-



#### DESCRIPTION

Fantastic beautiful apartments only 700 meters from the sandy beach of San Pedro del Pinatar and very short distance to several shops and restaurants. This is one of the best deals for a holiday in Spain. The apartment consists of 2 bedrooms and 2 bathrooms. Large and open living room with ultramodern kitchen. Several terraces. Private Terrace throughout 80m.2 Walking distance to everything. You can choose whether you want apartment in first floor with a huge patio or apartment on the second floor with roof terrace. Finished installing the outdoor kitchen either in the garden of the apartments on the ground floor or on the roof terrace. It is only used building materials in very high quality. Security door, double windows very well insulated. IT'S HARD TO BEAT THIS PRICE.

STYLE	AIRCONDITIONING	DISTANCE TO :	ORIENTATION
<ul style="list-style-type: none"> <li>Modern</li> </ul>	<ul style="list-style-type: none"> <li>Central airconditioning</li> </ul>	Beach : 500 m Airport: 20 Km Town center : 200 m	South
FURNITURE	PARKING	FLOORING	KITCHEN
<ul style="list-style-type: none"> <li>Not furnished</li> </ul>	Garage no Cars : 1 Parking no Cars: 1	<ul style="list-style-type: none"> <li>Tile floors</li> </ul>	<ul style="list-style-type: none"> <li>Open kitchen</li> <li>Equipped kitchen</li> </ul>
GARDEN AND TERRACES	HEATING	EXTRA	
<ul style="list-style-type: none"> <li>Covered terrace</li> <li>Open terrace</li> <li>Exterior lights</li> <li>Automatic watering system</li> <li>Palm trees</li> <li>Landscaped</li> <li>Stone walls</li> <li>Electric gate</li> <li>BBQ/grill</li> <li>Communal Garden</li> </ul>	<ul style="list-style-type: none"> <li>Central electric heating</li> </ul>	<ul style="list-style-type: none"> <li>Built in wardrobes</li> <li>Reinforced door</li> <li>Double glazed windows</li> <li>Satellite TV</li> <li>Internet</li> </ul>	

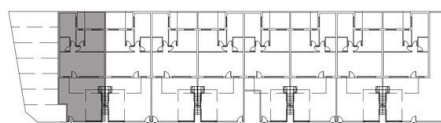




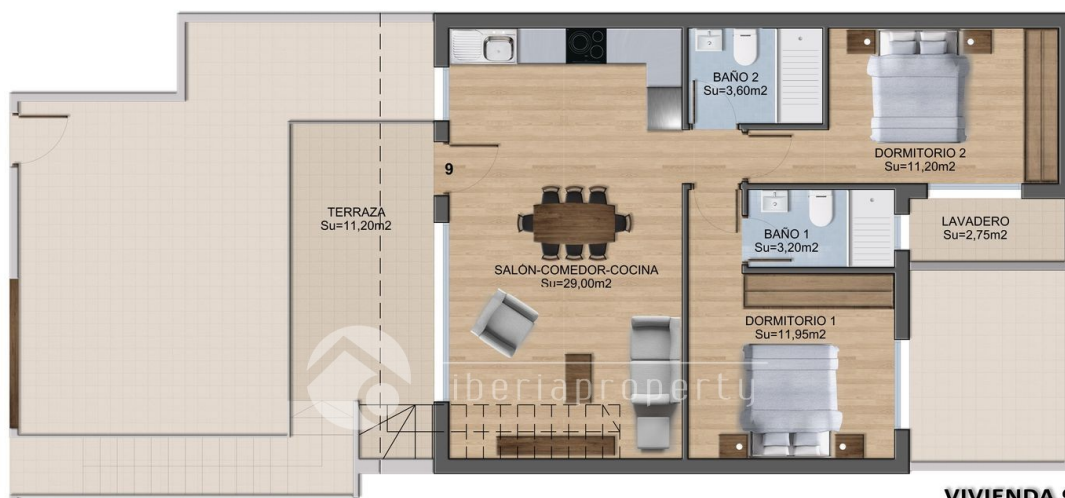


**VIVIENDA 1**  
**PLANTA BAJA**  
ESCALA:1/50

Vivienda 1 Planta.		Uso.	S. Útil.	S. Const.
<b>Tipo</b> <b>PLANTA BAJA</b>	Baja.	Vivienda.	58.95 m2	<b>69.74 m2</b>
		Jardín.	46.00 m2	<b>46.00 m2</b>
		Patio.	11.45 m2	<b>11.45 m2</b>
		<b>Total m2.</b>	<b>116.40 m2</b>	<b>127.19 m2</b>

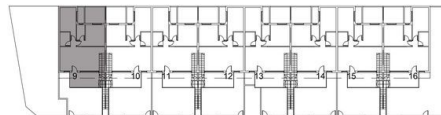


# PLAYAMAR II



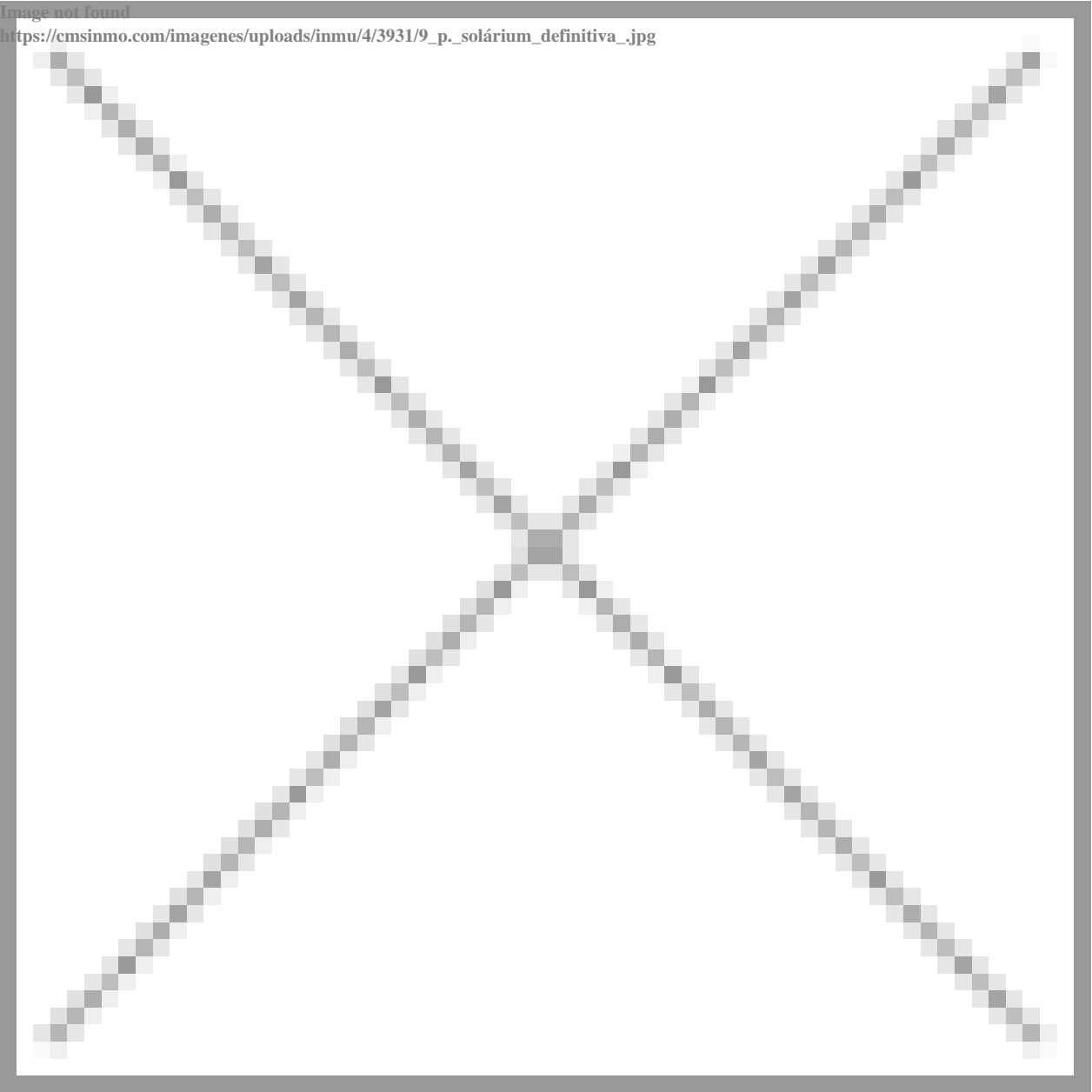
**VIVIENDA 9**  
**PLANTA PRIMERA**  
ESCALA:1/50

Vivienda 9 Planta.		Uso.	S. Útil.	S. Const.
<b>Tipo</b> <b>PLANTA PRIMERA</b>	Baja.	Vivienda.	58.95 m2	<b>69.74 m2</b>
		Lavadero.	2.75 m2	<b>2.75 m2</b>
		Terraza.	11.20 m2	<b>11.20 m2</b>
		Solárium.	68.80 m2	<b>79.97 m2</b>
		<b>Total m2.</b>	<b>141.70 m2</b>	<b>163.66 m2</b>

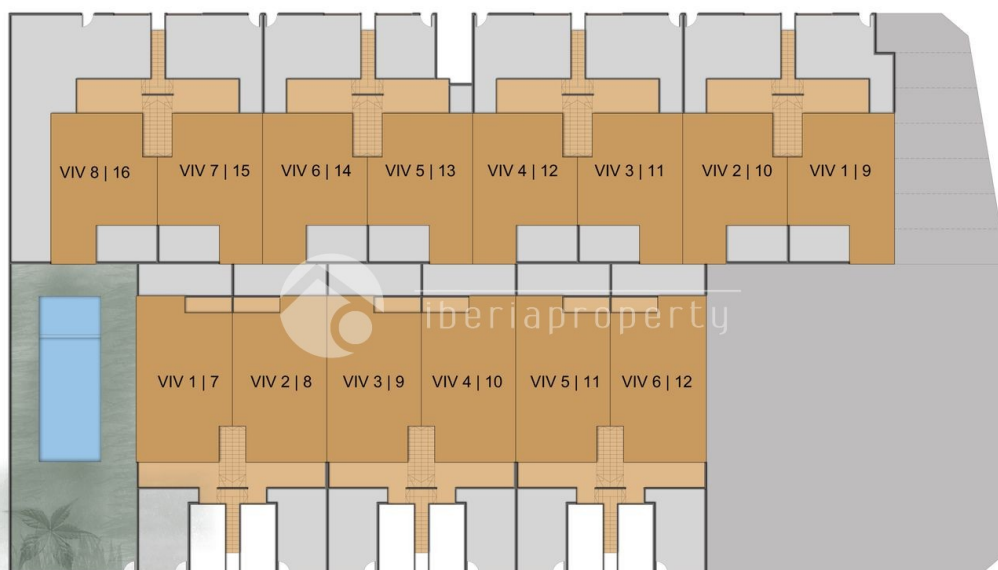


# PLAYAMAR II

Image not found  
[https://cmsinmo.com/imagenes/uploads/inmu/4/3931/9\\_p\\_solárium\\_definitiva\\_.jpg](https://cmsinmo.com/imagenes/uploads/inmu/4/3931/9_p_solárium_definitiva_.jpg)



## PLAYAMAR II



## PLAYAMAR I



























*"Experience our experience - Because you deserve the best"*