



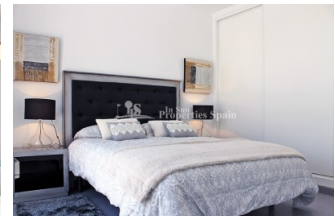
REF: # 4432

()



#### INFO

<b>PRICE:</b>	248.700 €
<b>PROPERTY TYPE:</b>	Villa
<b>LOCATION:</b>	()
<b>BEDROOMS:</b>	3
<b>Bathrooms:</b>	3
<b>Build:</b>	116 (m2)
<b>Plot:</b>	182 (m2)
<b>Terrace:</b>	69 (m2)
<b>Year:</b>	
<b>Floor:</b>	-
<b>Old price</b>	-



#### DESCRIPTION

If you are looking for the perfect place for you and your family to spend this summer then look no further! Natura Park II is a residential complex in ROJALES. Key Ready in June 2018 this STUNNING 3 bedroom, 3 bathroom 116m2 modern detached VILLA occupies a 182m2 plot and has 19m2 terrace, 50m2 solarium (additional cost €9,750) and 121m2 of garden to enjoy. It is distributed over two floors and included in the price is a private swimming pool, under floor heating to the bathrooms, interior and exterior lighting, furnished kitchen and bathrooms, air conditioning, plus parking space. It is located in a select and quiet municipality of Rojales, near the nature park of LA MATA LAGOON, only 3 km away from some of the best beaches on the Costa Blanca. In the area there are extensive sport and leisure opportunities, hotels, commercial centers, restaurants, three 18 hole golf courses, horse riding, tennis courts, etc. Easy access to the AP-7 motorway, less than 2 km away and to the airports of both Alicante and Murcia in less than 30 min drive.

<b>STYLE</b> <ul style="list-style-type: none"><li>• Modern</li><li>• Contemporary</li></ul>	<b>VIEWS</b> <ul style="list-style-type: none"><li>• Panoramic views</li></ul>	<b>AIRCONDITIONING</b> <ul style="list-style-type: none"><li>• Central airconditioning</li></ul>	<b>DISTANCE TO :</b> <div>Beach : 3 Km</div> <div>Airport: 30 Km</div> <div>Town center : 3 Km</div>
<b>ORIENTATION</b> <div>South</div>	<b>PARKING</b> <div>Parking no Cars: 1</div>	<b>FLOORING</b> <ul style="list-style-type: none"><li>• Tile floors</li><li>• Stone floors</li></ul>	<b>KITCHEN</b> <ul style="list-style-type: none"><li>• Open kitchen</li><li>• Equipped kitchen</li><li>• Granite countertop</li></ul>
<b>GARDEN AND TERRACES</b> <ul style="list-style-type: none"><li>• Open terrace</li><li>• Landscaped</li><li>• Stone walls</li><li>• Private garden</li></ul>	<b>EXTRA</b> <ul style="list-style-type: none"><li>• Built in wardrobes</li><li>• Reinforced door</li><li>• Double glazed windows</li></ul>		



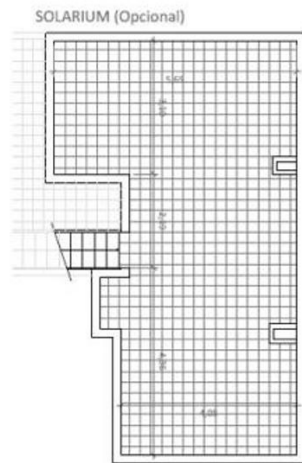




















*"Experience our experience - Because you deserve the best"*