



REF: # 5948

()



INFO

PRICE: 188.000 €

PROPERTY TYPE: Apartment

LOCATION: ()

BEDROOMS: 3

Bathrooms: 2

Build: 102 (m2)

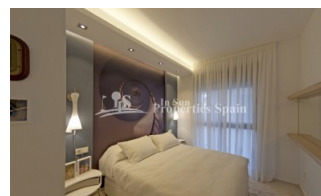
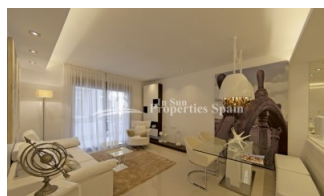
Plot: -

Terrace: 35 (m2)

Year:

Floor: -

Old price -



DESCRIPTION

Gran Sol is a new KEY READY residential located in Doña Pepa, an elegant urbanisation with wide avenues, wonderful views to the Natural Park and the salt lakes with a wide range of leisure activities and all the necessary amenities. Available are these 3 bedrooms, 2 bathroom Ground Floor, Corner Apartments of 102m2 with 35m2 private garden with tiled area and artificial grass, storage room, access to four swimming pools, beautiful Green areas, Gym and a private gated parking inside the residential. Each block also has a lift that leads directly to the solarium. Its high-tech architecture with pure lines combines perfectly with its predominant colour (white) giving a sensation of harmony. Doña Pepa is a modern urbanisation belonging to Ciudad Quesada and has all the amenities which include supermarkets, bars, hotel and shops as well as a bank. Ciudad Quesada town centre is a ten minute walk from Doña Pepa. In Ciudad Quesada itself you will find international supermarkets, restaurants, banks, a medical centre as well as a water park. The property is ideally located if you are a golf enthusiast, with La Marquesqa Golf Club just a five minute drive away. The nearest beaches are at Guardamar/Campomar and La Mata ten minutes drive away. Nearest Airports: San Javier (Murcia) - Approx 30 minute drive Alicante Airport - Approx 30 minute drive

STYLE <ul style="list-style-type: none">• Modern• Contemporary	VIEWS <ul style="list-style-type: none">• Panoramic views	DISTANCE TO : <div>Beach : 7 Km</div> <div>Airport: 30 Km</div> <div>Town center : 1 Km</div>	ORIENTATION <div>South East West</div>
PARKING <div>Parking no Cars: 1</div>	MAIN LIVING AREA <ul style="list-style-type: none">• Storage• Gym	FLOORING <ul style="list-style-type: none">• Tile floors• Stone floors	KITCHEN <ul style="list-style-type: none">• Open kitchen• Equipped kitchen
GARDEN AND TERRACES <ul style="list-style-type: none">• Covered terrace• Open terrace• Landscaped• Stone walls• BBQ/grill• Private garden• Communal Garden	EXTRA <ul style="list-style-type: none">• Built in wardrobes• Reinforced door• Double glazed windows• Lift		













"Experience our experience - Because you deserve the best"