



**In Sun  
Properties Spain**  
since 1999

REF: # 6642



#### INFO

**PRICE:** 185.000 €

**PROPERTY TYPE:** Apartment

**LOCATION:**

**BEDROOMS:** 3

**Bathrooms:** 2

**Build:** 79 (m2)

**Plot:** -

**Terrace:** 16 (m2)

**Year:** -

**Floor:** -

**Old price** -



#### DESCRIPTION

This stunning new residential is located on one of the cliffs of GRAN ALACANT, very close to the lighthouse with many tourist, forest and sports attractions at your disposal. The development offers the perfect combination of beach, sun and your family home in front of the sea. Situated in a quiet zone of Gran Alacant, beside the Sports Center with sea views! Also available 2 bed with solarium from €204,000. The modern Kitchens are equipped with top quality upper and lower cabinets of a modern design with soft close drawers and doors. Gloss white with Gola type recessed handles. Kitchen taps from the GALINDO brand. Double sink from the ROCA brand. Preinstallation for dishwasher, washing machine and dryer. The leisure areas form part of a completely enclosed perimeter with a security booth at the entrance with video surveillance system. There is designer street furniture, a Gymnasium, Spa with sauna and Turkish Bath, an outside swimming pool for adults and children. 2 heated Jacuzzis. The Chill out zone for the EXCLUSIVE USE of blocks 1 & 2 has a garden area with designer furniture, bicycle parking and Lift. Other qualities include; • Armored main door • Steel railings and laminated glass • Air conditioning • floor heating in the bathrooms • Hydro massage shower • Fitted wardrobes • Glass and steel shower screen • Designer furniture and taps in kitchen and bathrooms • Alarm and internet • Electric window blinds • Terrace with floating pavement.\*\*\* In this area you will find endless services and infrastructure, including sports center, shopping, supermarkets, shops, street market, leisure area, school, health services, pharmacy, banks, offices, library, church, parks, and much more. Gran Alacant good quality of life is one of the things that make it a very special place; it has more than three hundred sunny days per year. Seven minutes of

the residential you will find El Carabassí beach, a virgen beach area with a combination of new big dunes, fossil dunes and several pine forests. Between its dunes, people look for an intimate place to sunbathe in a magical natural environment. It has golden sand, and it's one of the beaches that you have to walk far to make the water reach your knees. This beach has some rocks and marine life. Beside of El Carabassí beach, exists a coastal area with great environment value, special to go for a walk or ride a bike. This wetland is integrated in the set of ponds of the illicitana departure of Balsares and connected with the pine forests and dunes of El Carabassí. Besides this, every day, skies of El Carabassí are happy with the colorful kites of the paragliders. Even if you don't encourage yourself to try it, it is a spectacle that you will enjoy from the sand. 7 minutes from the beach, 12 minutes from the Airport and just 15 minutes from the centre of Alicante and Elche.

<b>STYLE</b> <ul style="list-style-type: none"><li>• Modern</li><li>• Contemporary</li></ul>	<b>VIEWS</b> <ul style="list-style-type: none"><li>• Sea views</li></ul>	<b>AIRCONDITIONING</b> <ul style="list-style-type: none"><li>• Central airconditioning</li></ul>	<b>DISTANCE TO :</b> <div>Beach : 3 Km</div> <div>Airport: 20 Km</div> <div>Town center : 4 Km</div>
<b>ORIENTATION</b> <div>South East West</div>	<b>FURNITURE</b> <ul style="list-style-type: none"><li>• Not furnished</li></ul>	<b>PARKING</b> <div>Parking no Cars: 1</div>	<b>MAIN LIVING AREA</b> <ul style="list-style-type: none"><li>• Bathroom en-suite</li><li>• Gym</li></ul>
<b>FLOORING</b> <ul style="list-style-type: none"><li>• Tile floors</li><li>• Stone floors</li></ul>	<b>KITCHEN</b> <ul style="list-style-type: none"><li>• Open kitchen</li><li>• Equipped kitchen</li></ul>	<b>GARDEN AND TERRACES</b> <ul style="list-style-type: none"><li>• Covered terrace</li><li>• Open terrace</li><li>• Landscaped</li><li>• Stone walls</li><li>• Communal Garden</li></ul>	<b>HEATING</b> <ul style="list-style-type: none"><li>• Floor heating bathrooms</li></ul>
<b>EXTRA</b> <ul style="list-style-type: none"><li>• Outdoor jacuzzi</li><li>• Built in wardrobes</li><li>• Alarm</li><li>• Reinforced door</li></ul>			





















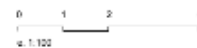
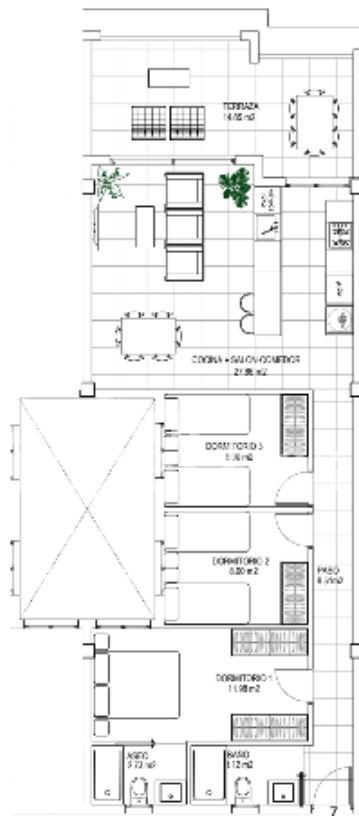




## Planta 1



Plants 01



SEPA-REDAKUTIO	m
Decimale 1	17,46
Decimale 2	84,05
Decimale 3	84,05
Stato concesso usata	27,08
Kilo	3,13
Acquedotto	27,08
Fino	8,51
TOTAL SUP. CITA. INTERIOR	70,20
TOTAL SUP. CONSTRUCTION	78,60
Totale 1	54,65
TOTAL SUP. INCL. TERZOZAS	93,84





*"Experience our experience - Because you deserve the best"*