



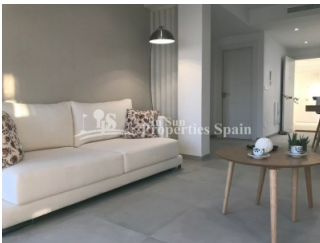
REF: # 6765

()



INFO

PRICE:	153.950 €
PROPERTY TYPE:	Apartment
LOCATION:	()
BEDROOMS:	2
Bathrooms:	2
Build:	72 (m2)
Plot:	-
Terrace:	10 (m2)
Year:	
Floor:	-
Old price	-



DESCRIPTION

Contemporary, stylish modern maisonettes in SAN JAVIER with communal swimming pool and underground parking. Perfectly designed with just 22 beautiful homes (Phase I & II) set in 2 blocks with a large communal garden and swimming pool zone. Just 5-6 minutes walk from the beach. These modern homes offer a spacious living area with generous terraces, set over 2 levels and the penthouse homes are “duplex style” set over the top 2 floors. A secure modern complex with lift access to all levels, private gardens for the ground floor homes and terraces for first and second floor properties. 2,3 or 4 bedrooms are available here. Externally fitted with ceramic wooden tiles, smooth white and grey render sections really make this a stunning urban style building. Perfectly located a short walk to the popular beaches of San Javier, 20 minute drive to the city of Cartagena and 35 minutes from the new Covera (Murcia International Airport). **Optional private underground parking space with storage rooms are available at an additional cost – full details onsite at the development. Perfect for living. These signature style homes offer an ‘oversized generous’ feel with 2, 3 or 4 bathrooms, open plan lounge and dining area, covered and open terraces, 2 or 3 bathrooms (master bedroom en-suite), large communal gardens with swimming pool, lift access, security gated entrance. Garage parking with storage rooms and individual storage rooms are available at an additional cost – further details on request.

STYLE <ul style="list-style-type: none">• Modern• Contemporary	VIEWS <ul style="list-style-type: none">• Panoramic views	DISTANCE TO : <div>Beach : 500 m</div> <div>Airport: 40 Km</div> <div>Town center : 500 m</div>	ORIENTATION <div>South East West</div>
PARKING <div>Garage no Cars : 1</div> <div>Parking no Cars: 1</div>	MAIN LIVING AREA <ul style="list-style-type: none">• Storage	FLOORING <ul style="list-style-type: none">• Tile floors• Stone floors	KITCHEN <ul style="list-style-type: none">• Open kitchen• Equipped kitchen
GARDEN AND TERRACES <ul style="list-style-type: none">• Open terrace• Landscaped• Private garden• Communal Garden	EXTRA <ul style="list-style-type: none">• Reinforced door• Double glazed windows• Storage room		

















"Experience our experience - Because you deserve the best"