



REF: # 8897

()



INFO

PRICE:	169.000 €
PROPERTY TYPE:	Apartment
LOCATION:	()
BEDROOMS:	2
Bathrooms:	2
Build:	75 (m2)
Plot:	-
Terrace:	60 (m2)
Year:	
Floor:	-
Old price	-



DESCRIPTION

NEW- Modern, Residential complex with south orientation in PAU-26 VILLAMARTIN. The project comprises 24 apartments of 2/3 bedroom, 2 bathroom, ground floor with 60m2 private garden and top floor with 18 m2 terrace and 75m2 private roof terrace and stunning views and are lovely communal areas with large garden areas and spacious swimming pool, as well as underground parking space with storage room. 2 bed, 2 bath from €169.000 ground floor and 2 bed, 2 bath with roof terrace from € 189.000 and 3 bed, 2 bath from €225.000 . Beautiful modern design, ideal for holiday home or the perfect property in the sun all year round. Close to all amenities, with regular bus routes to neighboring areas including the La Zenia Boulevard shopping centre, Villamartin Plaza . Torrevieja Hospital is a 10 min drive away ,15 minutes drive to the beaches of Orihuela Costa and four 18hole golf courses, 40 minutes to Alicante or Murcia Airport. Handover follows: 15 month's after full building license!

STYLE	VIEWS	AIRCONDITIONING	DISTANCE TO :
<ul style="list-style-type: none">• Modern• Contemporary	<ul style="list-style-type: none">• Panoramic views	<ul style="list-style-type: none">• Central airconditioning	Beach : 4 Km
			Airport: 40 Km
			Town center : 2 Km
ORIENTATION	FURNITURE	PARKING	MAIN LIVING AREA
South west	<ul style="list-style-type: none">• Not furnished	Parking no Cars: 1	<ul style="list-style-type: none">• Storage
FLOORING	KITCHEN	GARDEN AND TERRACES	EXTRA
<ul style="list-style-type: none">• Tile floors	<ul style="list-style-type: none">• Open kitchen• Equipped kitchen• Granite countertop	<ul style="list-style-type: none">• Covered terrace• Open terrace• Exterior lights• Fenced• Stone walls• Private garden• Communal Garden	<ul style="list-style-type: none">• Built in wardrobes• Reinforced door• Double glazed windows• Storage room







VIVIENDA 26-12



PLANTA BAJA

VIENDAS : 3 DORMITORIOS

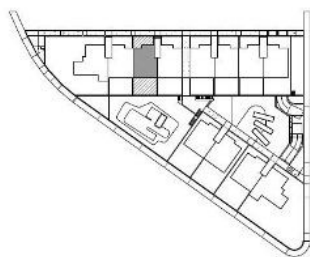
SUPERFICIE CONSTRUIDA

SUPERFICIE CERRADA	87,69 m2
PORCHE	17,50 m2
TERRAZA DESCUBIERTA	250,21 m2
TOTAL TERRAZA	267,71 m2
TOTAL SUPERFICIE	355,40 m2

0 0,5 1 2 3
ESCALA GRÁFICA



VIVIENDA 26-3

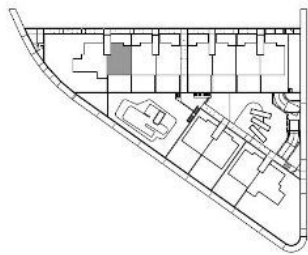


PLANTA BAJA
VIENDAS : 2 DORMITORIOS
SUPERFICIE CONSTRUIDA

SUPERFICIE CERRADA	75,22 m2
PORCHE	18,00 m2
TERRAZA DESCUB. DELANTERA	21,75 m2
TERRAZA DESCUB. TRASERA	20,25 m2
TOTAL TERRAZA	60,00 m2
TOTAL SUPERFICIE	135,22 m2



VIVIENDA 26-14

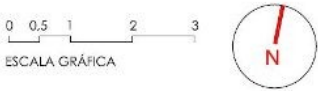


PLANTA PRIMERA

VIENDAS : 2 DORMITORIOS

SUPERFICIE CONSTRUIDA

SUPERFICIE CERRADA	75,22 m2
TERRAZA PLANTA VIV	18,00 m2
SOLARIUM	75,40 m2
TOTAL TERRAZA	93,40 m2
TOTAL SUPERFICIE	168,62 m2





PLANTA BAJA

RESIDENCIAL EL AMANECER VII
- SUNRISE VII
PAU-26 - ORIHUELA COSTA





 In Sun
Properties Spain







"Experience our experience - Because you deserve the best"