



**In Sun
Properties Spain**
since 1999

REF: # 9560



INFO

PRICE: 572.000 €

PROPERTY TYPE: Villa

LOCATION:

BEDROOMS: 3

Bathrooms: 3

Build: 178 (m2)

Plot: 535 (m2)

Terrace: 40 (m2)

Year: -

Floor: -

Old price -



DESCRIPTION

NEW BUILD MAGNIFICENT VILLA IN BENIJOFAR with garden and private pool. This modern style 178m2 villa consists of a spacious living-dining room with an open-plan kitchen, 3 bedrooms (one of them en-suite), 3 bathrooms, hot and cold air conditioning, video intercom and security door. It has a large 535m2 private plot with terrace, parking area, private pool and a Mediterranean-style garden with great views. Located in the small Spanish town of Benijofar in the province of Alicante on the Southern Costa Blanca. It is just 15 minutes away from the popular town of Torrevieja as well as Guardamar del Segura. There are shopping centers nearby the Habaneras shopping centre in Torrevieja and only 20 minutes drive there is "La Zenia Boulevard" the largest shopping centre in the Alicante region, it's a one-stop destination for clothes, shoes and general supplies. No matter what you're after, chances are you won't walk out empty-handed. The town is quaint and authentic with plazas, parks and a lovely river running through it. It is also close enough to the beaches only 12km away and tourist destinations for you to enjoy as well, so offering the best of both worlds. For golf lovers the two closest courses are only 8km away, they are La Finca Golf Course in Algorfa and the La Marquesa Golf and Country Club in Ciudad Quesada. Others nearby include Las Colinas Golf and Country Club, Vistabella Golf and Villamartin Golf to name a few. Villamartin Golf Course is now one of the most recognised golf courses on the Costa Blanca. Alicante Airport is 30 mins (50km) drive away and Murcia (Corvera) Airport is 50 minutes (75km).

STYLE

- Modern

VIEWS

- Panoramic views

AIRCONDITIONING

- Central airconditioning

DISTANCE TO :

Beach : +10 Km

Airport: 50 Km

PARKING

Parking no Cars: 1

MAIN LIVING AREA

- Bathroom en-suite

KITCHEN

- Open kitchen

GARDEN AND TERRACES

- Open terrace
- Fenced
- Private garden

EXTRA

- Reinforced door
- Video security





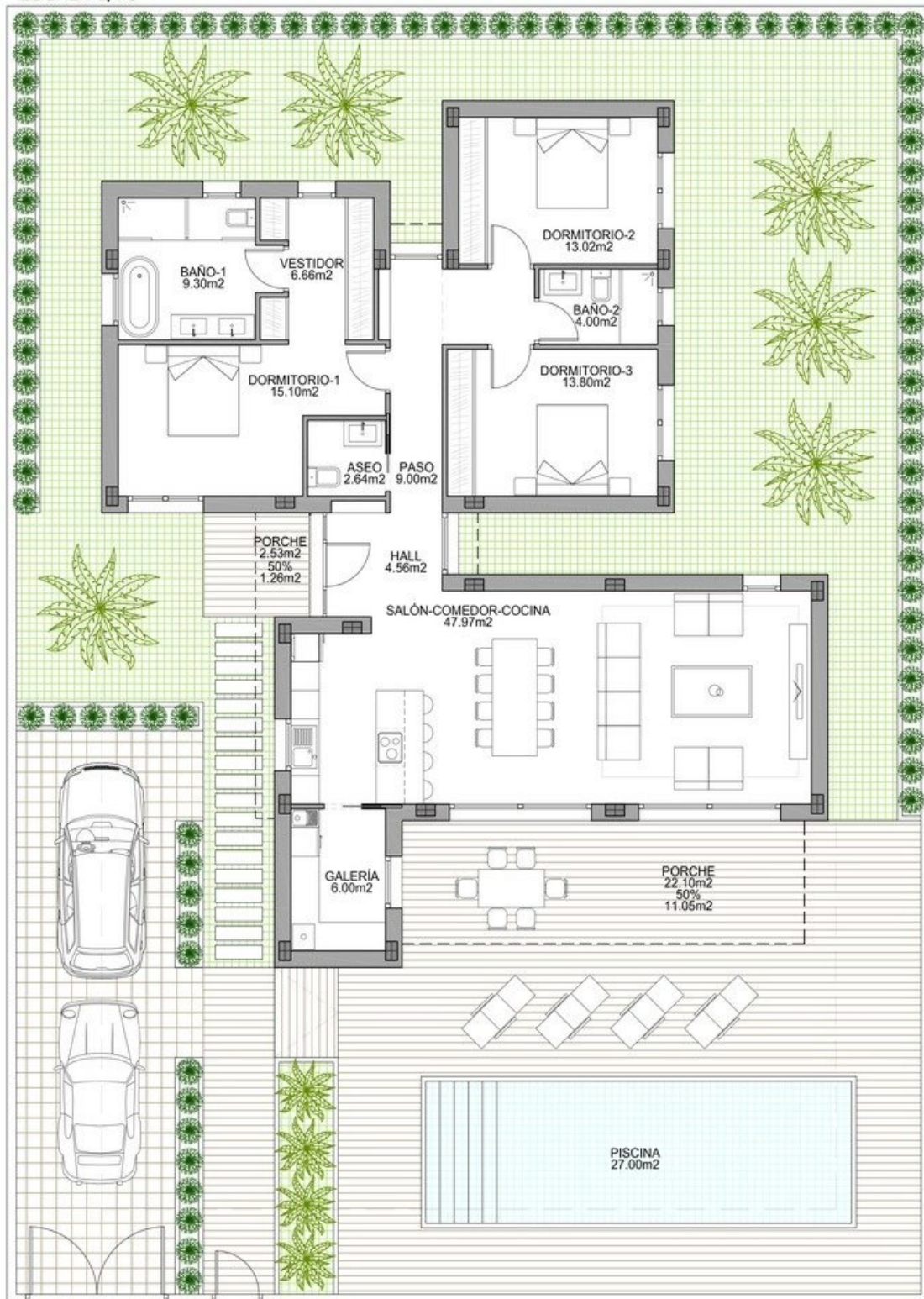




SUP. CONSTRUIDA 100%	164,23m ²
SUP. CONSTRUIDA PORCHE 50%	13,31m ²
SUP. CONSTRUIDA TOTAL	177,54m ²

SUP. ÚTIL 100%	132,05m ²
SUP. ÚTIL PORCHE 50%	13,31m ²
SUP. ÚTIL TOTAL	145,36m ²

ESCALA 1/75



CALLE FELIPE HERNÁNDEZ 35







"Experience our experience - Because you deserve the best"