



**In Sun  
Properties Spain**  
since 1999

REF: # 9580



#### INFO

<b>PRICE:</b>	550.000 €
<b>PROPERTY TYPE:</b>	Villa
<b>LOCATION:</b>	
<b>BEDROOMS:</b>	3
<b>Bathrooms:</b>	4
<b>Build:</b>	154 (m2)
<b>Plot:</b>	400 (m2)
<b>Terrace:</b>	25 (m2)
<b>Year:</b>	-
<b>Floor:</b>	-
<b>Old price</b>	-



#### DESCRIPTION

FANTASTIC VILLA, DETACHED, IN LOS ALTOS, TORREVIEJA with private pool and garden. This 154m2 Mediterranean style villa consists of 3 bedrooms, 4 bathrooms, a lounge with chimenea, a large kitchen, a 25m2 terrace, a double garage and a large 400m2 garden with pool and parking. It's key ready! And is situated in Los Altos just a few minutes away from Torrevieja Hospital, the pink salt lake and only 2km from Torrevieja and the beach. Enjoy the sea without giving up all the comforts of residing near an important urban center, with easy access and connected by bus to the city center. Torrevieja is a Spanish town in the province of Alicante, on the Costa Blanca. It is known for its superb promenade, restaurants, weekly Friday market and the Habaneras shopping centre. Only 15 minutes drive is "La Zenia Boulevard" the largest shopping centre in the Alicante region, it's a one-stop destination for clothes, shoes and general supplies. No matter what you're after, chances are you won't walk out empty-handed. In addition to the original established Golf courses on the Orihuela Costa Villamartin, Las Ramblas, Real Campoamor and Las Colinas, Torrevieja area is now also well served with excellent courses such as La Finca, La Marquesa, Las Colinas, Lo Romero and Vistabella offering different golf experiences with a variety of sea and mountain views. The nearest Airport is Alicante which is 39 km away.

## STYLE

- Mediterranean

## VIEWS

- Panoramic views

## AIRCONDITIONING

- Central airconditioning

## DISTANCE TO :

Beach : 2 Km

Airport: 40 Km

## FURNITURE

- Furnished

## PARKING

Garage no Cars : 1

## GARDEN AND TERRACES

- Open terrace
- Fenced
- Private garden

## HEATING

- Fireplace wood

## EXTRA

- Reinforced door





























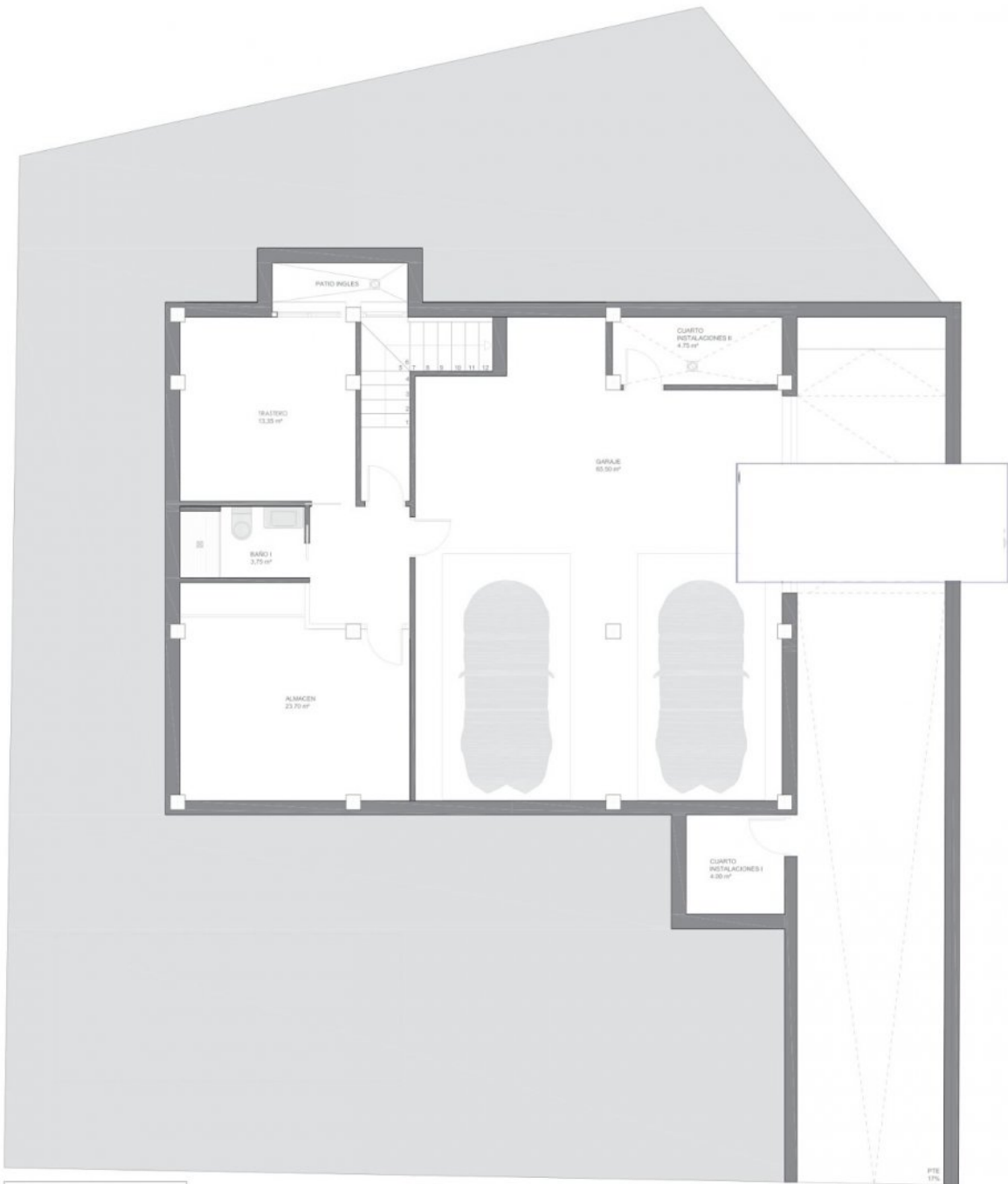












CUADRO DE SUPERFICIES		
DESCRIPCIÓN	SUPERFICIE ÚTIL	SUP. CONSTRUIDA
<b>VIVIENDA</b>		
<b>Sótano</b>	<b>114.75 m²</b>	<b>133.40 m²</b>
A1. Cuarto Instalaciones I	4.08 m²	
A2. Garage	65.50 m²	
A3. Cuarto Instalaciones II	4.75 m²	
A4. Almacén	23.70 m²	
A5. Trastero II	13.38 m²	
A6. Baño II	3.75 m²	
<b>Pl.baja</b>	<b>79.60 m²</b>	<b>102.10 m²</b>
B1. Alcobor	2.90 m²	
B2. Salon-Comedor-Cocina	44.40 m²	
B3. Lavadero	3.15 m²	
B4. Pasa I	3.48 m²	
B5. Pasa	3.05 m²	
B6. Dormitorio I	11.20 m²	
B7. Vestidor I	3.00 m²	
B8. Baño I	8.40 m²	
<b>Pl.1ª</b>	<b>29.90 m²</b>	<b>52.36 m²</b>
C1. Pasa II	4.50 m²	
C2. Dormitorio II	10.80 m²	
C3. Vestidor II	3.25 m²	
C4. Baño II	3.00 m²	
C5. Dormitorio III	10.90 m²	
C6. Baño III	4.20 m²	
<b>TOTAL CONSTRUIDA</b>	<b>236.90 m²</b>	<b>267.86 m²</b>
<b>EXTERIOR</b>		
D18. Piscina	21.00 m²	
D19. Terraza descubierta (no computable)	25.95 m²	
D20. Jardin descubierta (no computable)	180.85 m²	

VIVIENDA N°29	
Superficie parcela	416.00 m²
<b>EDIFICABILIDAD PERMITIDA: 8.3719 m²/m² = 154.71 m²</b>	
Superficie construida planta baja	102.10 m²
Superficie construida planta 1ª	52.36 m²
<b>Total superficie construida vivienda</b>	<b>154.46 m²</b>
Piscina	21.00 m²
Porche (no computable)	25.95 m²
Superficie construida planta sótano	133.40 m²



plano  
**DISTRIBUCIÓN Y SUPERFICIES**  
**Planta SÓTANO**  
escala **A3: 1/75**  
proyecto básico y ejecución:









*"Experience our experience - Because you deserve the best"*