



REF: # 9728

()



#### INFO

<b>PRICE:</b>	249.900 €
<b>PROPERTY TYPE:</b>	Apartment
<b>LOCATION:</b>	()
<b>BEDROOMS:</b>	3
<b>Bathrooms:</b>	2
<b>Build:</b>	80 (m2)
<b>Plot:</b>	-
<b>Terrace:</b>	91 (m2)
<b>Year:</b>	-
<b>Floor:</b>	-
<b>Old price</b>	-



#### DESCRIPTION

NEW BUILD RESIDENTIAL OF APARTMENTS TOP FLOOR IN PILAR DE LA HORADADA This 80m2 top floor apartment consists of 3 bedrooms and 2 bathrooms with a 10m2 terrace and a 81m2 private solarium with communal pool and parking space. Pilar de la Horadada is a typical Spanish village in the most southern part of the Costa Blanca. The large main street has supermarkets, lots of shops, restaurants and bars and some lovely squares. The beautiful beaches of Torre de la Horadada and Mil Palmeras with fine sand promenade is just 5 minutes away. In addition to the original established Golf courses on the Orihuela Costa Villamartin, Las Ramblas, Real Campoamor and Las Colinas approximately 14km away, Pilar de la Horadada is also well served with the excellent course Lo Romero, only a 4.2km drive away. Only 8.2km away between San Javier and San Pedro del Pinatar, is Dos Mares shopping centre, and the major shopping centres of Murcia and Cartagena are also both under an hour's drive away. Further towards the Orihuela Costa, only a 15 minute journey you will find "La Zenia Boulevard" the largest shopping centre in the Alicante region. The Airports of Corvera (Murcia) and Alicante are respectively 40 and 55 minutes away.

## STYLE

- Modern

## VIEWS

- Panoramic views

## DISTANCE TO :

Beach : 5 Km

Airport: 50 Km

Town center : 5 Km

## PARKING

Parking no Cars: 1

## GARDEN AND TERRACES

- Open terrace

## EXTRA

- Reinforced door



















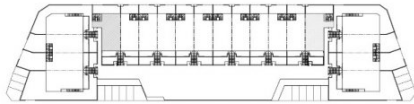




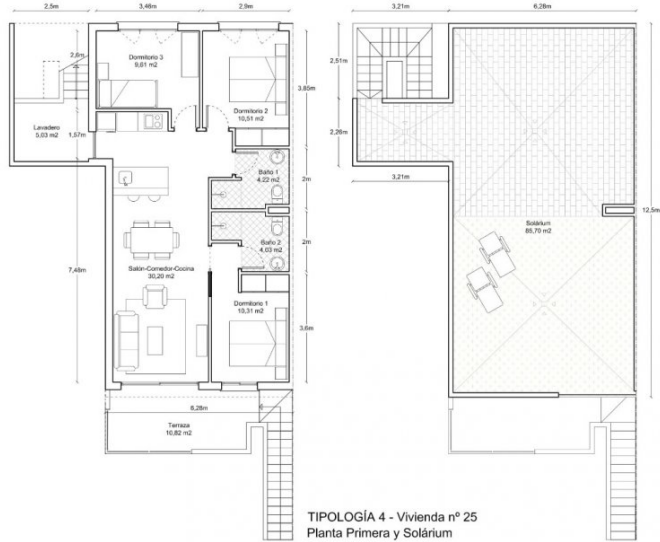








CUADRO DE SUPERFICIES		
USO	SUPERFICIE UTIL	SUPERFICIE CONSTRUIDA
Tipología 4 (Planta primera y solárium)	Salón-Comedor-Cocina	30,20
	Dormitorio 1	10,25
	Dormitorio 2	10,51
	Dormitorio 3	9,61
	Baño 1	4,22
	Baño 2	4,03
	Lavadero (100%)	5,03
		6,00
	Terraza	10,82 (no comp.)
	Solárium	85,70 (no comp.)
<b>TOTAL computable</b>	<b>73,85</b>	<b>85,54</b>

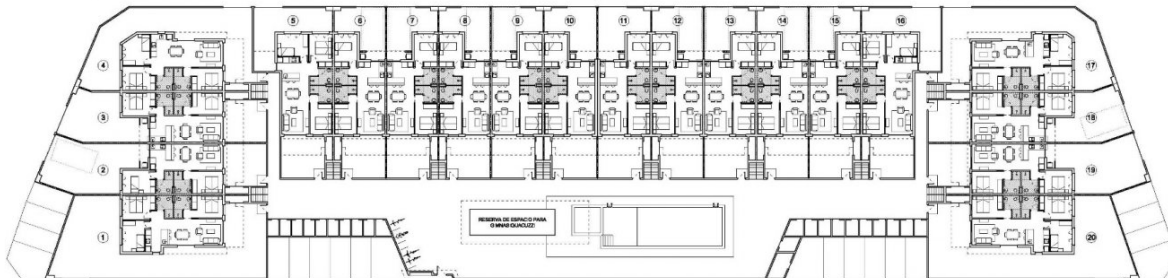


NUMERACIÓN VIVIENDAS  
Planta Baja

PHASE II

PHASE I

Ground Floor

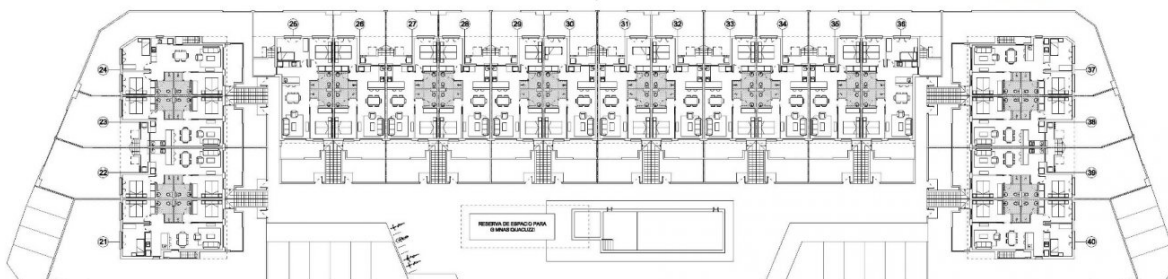


Planta Primera

PHASE II

PHASE I

Top Floor











*"Experience our experience - Because you deserve the best"*