



REF: # 9738



INFO

PRICE: 369.900 €

PROPERTY TYPE: Apartment

LOCATION:

BEDROOMS: 3

Bathrooms: 2

Build: 163 (m2)

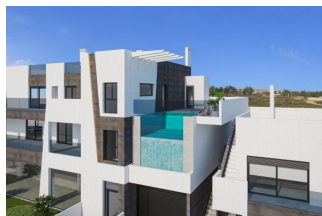
Plot: -

Terrace: 92 (m2)

Year: -

Floor: -

Old price -



DESCRIPTION

NEW BUILD MODERN RESIDENTIAL COMPLEX 3 BED APARTMENT IN PILAR DE LA HORADADA. This 163m2 apartment consists of 3 bedrooms, 2 bathrooms, a 92m2 private terrace and an impressive communal rooftop pool area. Each apartment comes with a garage space in the basement. The building has a commercial space on the ground floor. The development is located in an unbeatable enclave within a large residential area of Pilar de la Horadada, a privileged place to families for easy access to all kinds of services. Pilar de la Horadada is a typical Spanish village in the most southern part of the Costa Blanca. The large main street has supermarkets, lots of shops, restaurants and bars and some lovely squares. In addition to the original established Golf courses on the Orihuela Costa Villamartin, Las Ramblas, Real Campoamor and Las Colinas approximately 14km away, Pilar de la Horadada is also well served with the excellent course Lo Romero only 4.2km drive. Only 8.2km away between San Javier and San Pedro del Pinatar, is Dos Mares shopping centre, and the major shopping centres of Murcia and Cartagena are also both under an hour's drive away. Further towards the Orihuela Costa, only a 15 minute journey you will find "La Zenia Boulevard" the largest shopping centre in the Alicante region. The beautiful beaches of Torre de la Horadada and Mil Palmeras with fine sand promenade is just 5 minutes away.

STYLE

- Modern

EXTRA

- Reinforced door

DISTANCE TO :

Beach : 4 Km

Airport: 50 Km

PARKING

Parking no Cars: 1

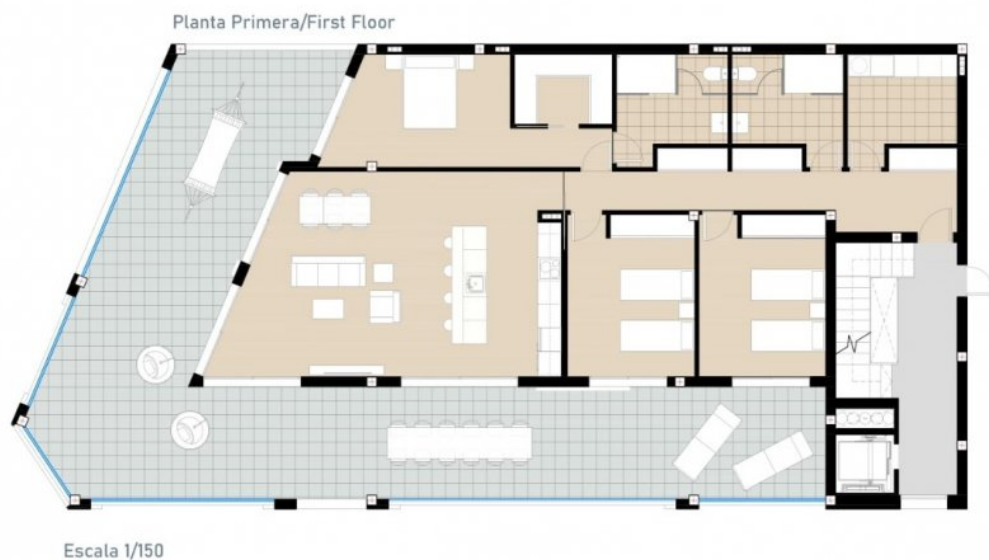
**GARDEN AND
TERRACES**

- Open terrace









PLANTA PRIMERA/FIRST FLOOR

Estancia/Room	Resumen de superficie		
Sup. Útil			
Estar-Comedor-Cocina/		Apartamento/Apartment	141,40 m²
Living room-Kitchen	42,05 m²	Porche/Porch	0,00 m²
Vestidor/Dressing room	4,50 m²	Terrazas/Terraces	92,20 m²
Dormitorio 1/Bedroom 1	15,10 m²	Solarium/Solarium	0,00 m²
Dormitorio 2/Bedroom 2	13,45 m²	TOTAL	233,60 m²
Dormitorio 3/Bedroom 3	13,40 m²		
Baño 1/ Bathroom 1	7,10 m²		
Baño 2/ Bathroom 2	7,10 m²		
Galería	7,00 m²		
Distribuidor/Hall	14,90 m²		
TOTAL	124,60 m²		
Sup. Construida			
TOTAL	209,61 m²		



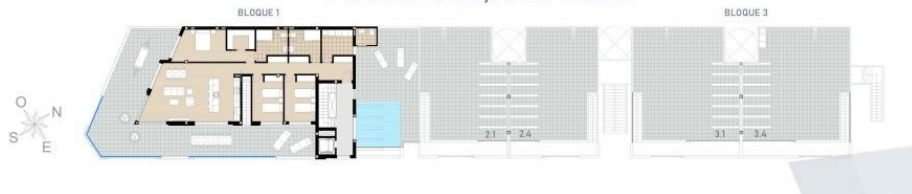
PLANTA BAJA/GROUND FLOOR



PLANTA PRIMERA/FIRST FLOOR



PLANTA ÁTICO/ATTIC FLOOR









"Experience our experience - Because you deserve the best"