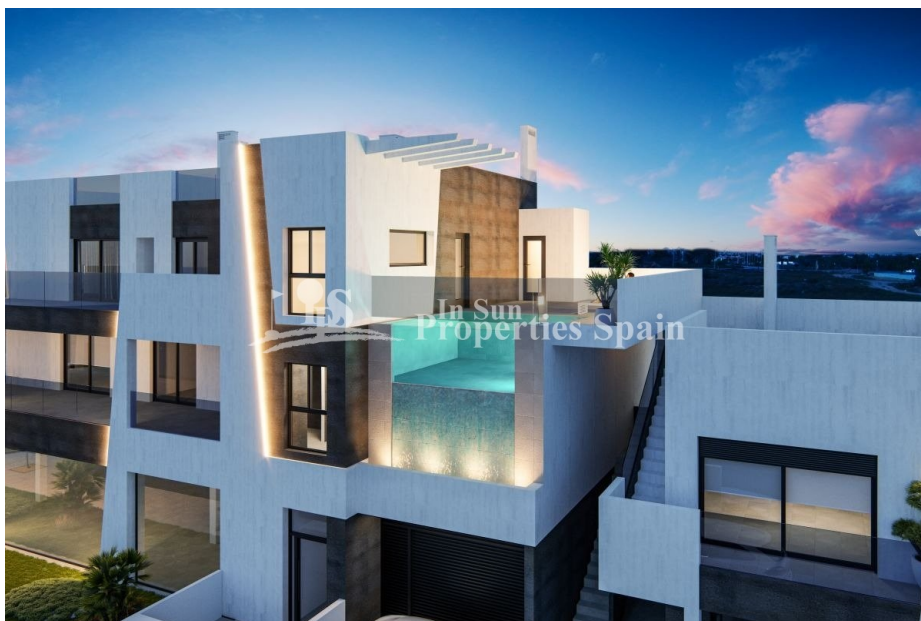




REF: # 9739



INFO

PRICE: 369.900 €

PROPERTY TYPE: Penthouse

LOCATION:

BEDROOMS: 3

Bathrooms: 2

Build: 154 (m2)

Plot: -

Terrace: 162 (m2)

Year: -

Floor: -

Old price -



DESCRIPTION

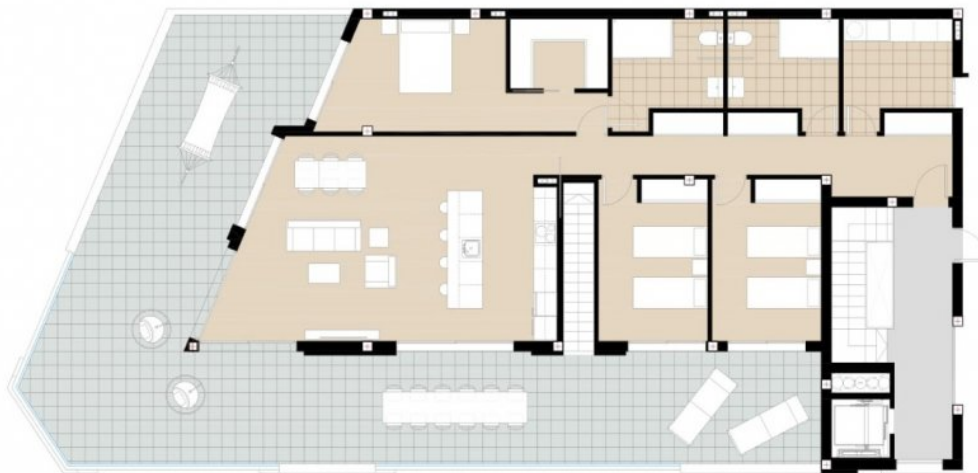
NEW BUILD MODERN RESIDENTIAL COMPLEX APARTMENT PENTHOUSE IN PILAR DE LA HORADADA. This 154m2 penthouse apartment consists of 3 bedrooms, 2 bathrooms, a 92m2 private terrace and large 70m2 private solarium with an impressive communal rooftop pool area. Each apartment comes with a garage space in the basement. The building has a commercial space on the ground floor. The development is located in an unbeatable enclave within a large residential area of Pilar de la Horadada, a privileged place to families for easy access to all kinds of services. Pilar de la Horadada is a typical Spanish village in the most southern part of the Costa Blanca. The large main street has supermarkets, lots of shops, restaurants and bars and some lovely squares. In addition to the original established Golf courses on the Orihuela Costa Villamartin, Las Ramblas, Real Campoamor and Las Colinas approximately 14km away, Pilar de la Horadada is also well served with the excellent course Lo Romero only 4.2km drive. Only 8.2km away between San Javier and San Pedro del Pinatar, is Dos Mares shopping centre, and the major shopping centres of Murcia and Cartagena are also both under an hour's drive away. Further towards the Orihuela Costa, only a 15 minute journey you will find "La Zenia Boulevard" the largest shopping centre in the Alicante region. The beautiful beaches of Torre de la Horadada and Mil Palmeras with fine sand promenade is just 5 minutes away. The airports of Corvera (Murcia) and Alicante are respectively 40 and 55 minutes away.

STYLE	VIEWS	DISTANCE TO :	PARKING
<ul style="list-style-type: none">Modern	<ul style="list-style-type: none">Panoramic views	Beach : 4 Km <hr/> Airport: 50 Km <hr/>	Parking no Cars: 1 <hr/>
GARDEN AND TERRACES	EXTRA		
<ul style="list-style-type: none">Open terracePrivate garden	<ul style="list-style-type: none">Reinforced door		





Planta Ático/Attic Floor



Escala 1/150

PLANTA ATICO/ATTIC FLOOR

Estancia/Room		Resumen de superficie	
Sup. Útil			
Estar-Comedor-Cocina/		Envolvente	138,85 m²
Living room-Kitchen	42,05 m²	Porche/Porch	0,00 m²
Vestidor/Dressing room	4,50 m²	Terrazas/Terraces	92,20 m²
Dormitorio 1/Bedroom 1	15,10 m²	Solarium/Solarium	70,35 m²
Dormitorio 2/Bedroom 2	11,55 m²	TOTAL	301,40 m²
Dormitorio 3/Bedroom 3	11,55 m²		
Baño 1/ Bathroom 1	7,10 m²		
Baño 2/ Bathroom 2	7,10 m²		
Galería	7,00 m²		
Distribuidor/Hall	14,90 m²		
TOTAL	120,85 m²		
Sup. Construida			
TOTAL	154,04 m²		



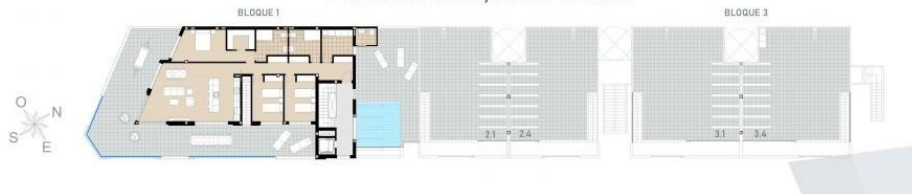
PLANTA BAJA/GROUND FLOOR



PLANTA PRIMERA/FIRST FLOOR



PLANTA ÁTICO/ATTIC FLOOR









"Experience our experience - Because you deserve the best"