



REF: # 9746



#### INFO

<b>PRICE:</b>	279.900 €
<b>PROPERTY TYPE:</b>	Apartment
<b>LOCATION:</b>	
<b>BEDROOMS:</b>	2
<b>Bathrooms:</b>	2
<b>Build:</b>	71 (m2)
<b>Plot:</b>	-
<b>Terrace:</b>	84 (m2)
<b>Year:</b>	-
<b>Floor:</b>	-
<b>Old price</b>	-



#### DESCRIPTION

NEW BUILD MODERN RESIDENTIAL COMPLEX APARTMENT TOP FLOOR IN PILAR DE LA HORADADA. This beautiful 71m2 top floor apartment consists of 2 bedrooms, 2 bathrooms, a 22m2 private terrace and a large 62m2 private solarium. The complex has a large communal garden with pool, gym and playground for the kids. Each property has garage spaces and storerooms in the basement. Located in an unbeatable enclave within a large residential area of Pilar de la Horadada, it is a privileged place for families due to its easy access to all kinds of services and amenities. Pilar de la Horadada is a typical Spanish village in the most southern part of the Costa Blanca. The large main street has supermarkets, lots of shops, restaurants and bars and some lovely squares. The beautiful beaches of Torre de la Horadada and Mil Palmeras with fine sand promenade is just 5 minutes away. In addition to the original established Golf courses on the Orihuela Costa Villamartin, Las Ramblas, Real Campoamor and Las Colinas approximately 14km away, Pilar de la Horadada is also well served with the excellent course Lo Romero only 4.2km drive. The Airports of Corvera (Murcia) and Alicante are respectively 40 and 55 minutes away. The Airports of Corvera (Murcia) and Alicante are respectively 40 and 55 minutes away.

STYLE	VIEWS	DISTANCE TO :	PARKING
<ul style="list-style-type: none"><li>Modern</li></ul>	<ul style="list-style-type: none"><li>Panoramic views</li></ul>	Beach : 4 Km Airport: 50 Km	Garage no Cars : 2
MAIN LIVING AREA	GARDEN AND TERRACES	EXTRA	
<ul style="list-style-type: none"><li>Gym</li></ul>	<ul style="list-style-type: none"><li>Open terrace</li><li>Play Ground</li><li>Communal Garden</li></ul>	<ul style="list-style-type: none"><li>Reinforced door</li><li>Storage room</li></ul>	



















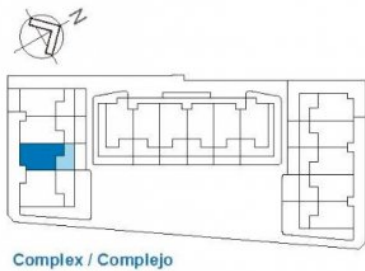




Room - Estancia	4
Living room - Kitchen (Estar - Cocina)	27,95
Laundry room (Galería)	3,75
Bedroom 1 (Dormitorio 1)	12,26
Bedroom 2 (Dormitorio 2)	9,98
Bedroom 3 (Dormitorio 3)	0,00
Bathroom 1 (Baño 1)	3,43
Bathroom 2 (Baño 2)	3,14
Covered Terrace (Terraza Cubierta)	1,66
Uncovered Terrace (Terraza Descubierta)	20,44
Solarium (Solarium)	62,17
<b>Total Surface</b> (Superficie total)	<b>144,78</b>



First Floor / Planta Primera  
(E:1/100)



Complex / Complejo



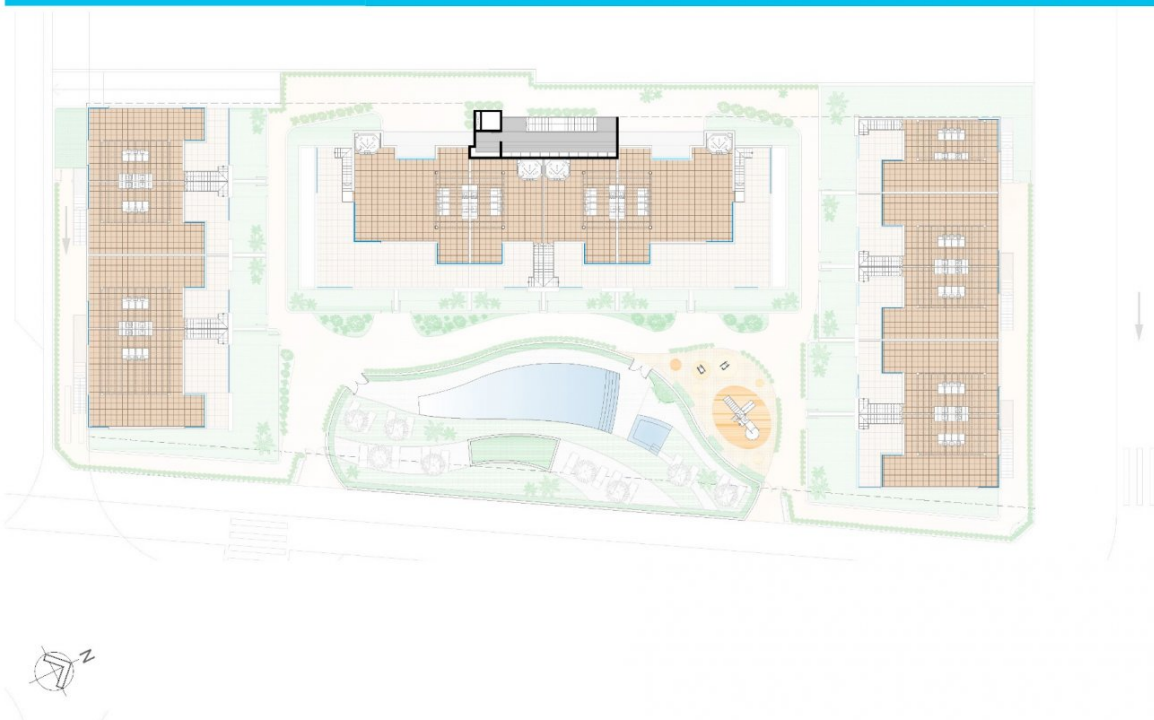
Solarium  
(E:1/200)

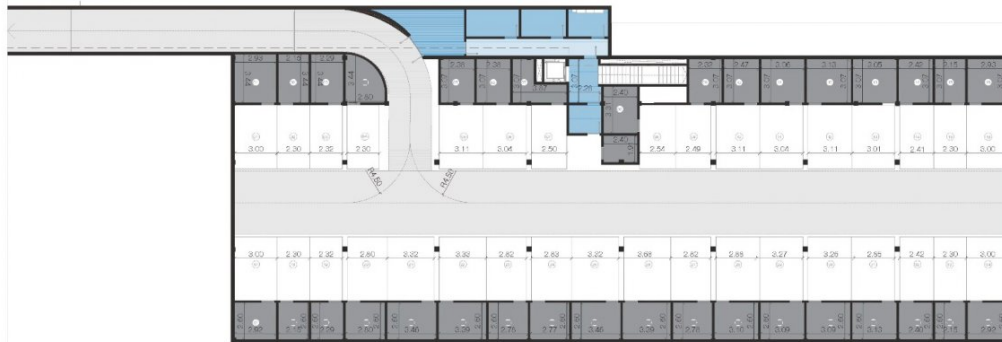


Ground Floor / Planta Baja



Solarium / Solarium











*"Experience our experience - Because you deserve the best"*