



REF: # 9763

()



#### INFO

**PRICE:** 659.000 €

**PROPERTY TYPE:** Apartment

**LOCATION:** ()

**BEDROOMS:** 3

**Bathrooms:** 2

**Build:** 109 (m2)

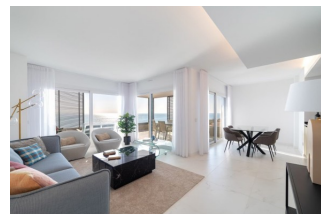
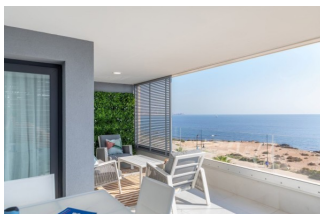
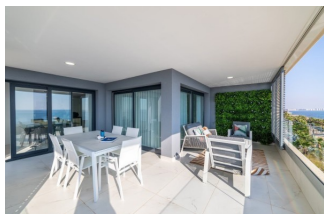
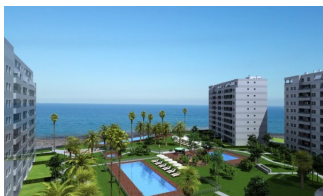
**Plot:** -

**Terrace:** -

**Year:** -

**Floor:** -

**Old price** -



#### DESCRIPTION

BEAUTIFUL RESIDENTIAL COMPLEX OF APARTMENTS GROUND FLOOR IN PUNTA PRIMA, FIRST LINE OF SEA WITH EXCLUSIVE VIEWS. This 109m2 ground floor apartment consists of 3 bedrooms, 2 bathrooms, underground parking space, a storage room and a large 176m2 private terrace with magnificent views of the Mediterranean Sea and the beach of Punta Prima. It has been designed with comfort and convenience in mind, with excellent qualities, thus allowing you to fully enjoy the common areas of the residential area. The residential has large garden areas and complete facilities from which you can enjoy the sun and sea views; these common areas are equipped with 3 swimming pools, one of which is partially heated. Children can enjoy their own children's pool, as well as a children's play area. From the urbanization, there is a direct access to the promenade. Punta Prima, located just 5 km from Torrevieja, is characterized by good communication and health infrastructures, the proximity to Alicante airport, and the number of services open throughout the year. Just 10 km away we can find the golf courses of Villamartín, Campoamor, Las Ramblas, Las Colinas and Lo Romero, as well as the commercial centers of La Zenia and Habaneras. ? Murcia and Alicante Airports only 50 minutes away.

<b>STYLE</b> <ul style="list-style-type: none"><li>• Modern</li><li>• Contemporary</li></ul>	<b>VIEWS</b> <ul style="list-style-type: none"><li>• Panoramic views</li><li>• Sea views</li></ul>	<b>AIRCONDITIONING</b> <ul style="list-style-type: none"><li>• Central airconditioning</li></ul>	<b>DISTANCE TO :</b> <div>Beach : 50 m</div> <div>Airport: 70 Km</div> <div>Town center : 500 m</div>
<b>PARKING</b> <div>Garage no Cars : 1</div>	<b>MAIN LIVING AREA</b> <ul style="list-style-type: none"><li>• Bathroom en-suite</li></ul>	<b>FLOORING</b> <ul style="list-style-type: none"><li>• Tile floors</li><li>• Stone floors</li></ul>	<b>KITCHEN</b> <ul style="list-style-type: none"><li>• Open kitchen</li><li>• Equipped kitchen</li><li>• Granite countertop</li></ul>
<b>GARDEN AND TERRACES</b> <ul style="list-style-type: none"><li>• Open terrace</li><li>• Exterior lights</li><li>• Play Ground</li><li>• Fenced</li><li>• Stone walls</li><li>• Electric gate</li></ul>	<b>EXTRA</b> <ul style="list-style-type: none"><li>• Built in wardrobes</li><li>• Reinforced door</li><li>• Double glazed windows</li><li>• Storage room</li></ul>		































*"Experience our experience - Because you deserve the best"*