



**In Sun
Properties Spain**
since 1999

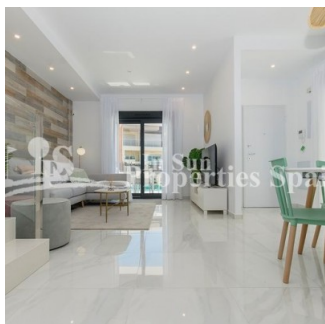
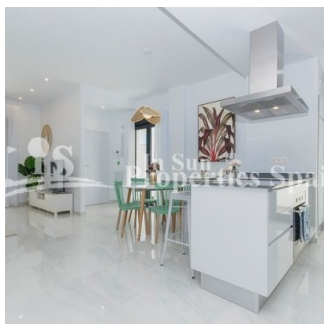
REF: # 9767

()



INFO

PRICE:	375.000 €
PROPERTY TYPE:	Villa
LOCATION:	()
BEDROOMS:	3
Bathrooms:	3
Build:	118 (m2)
Plot:	175 (m2)
Terrace:	20 (m2)
Year:	-
Floor:	-
Old price	-



DESCRIPTION

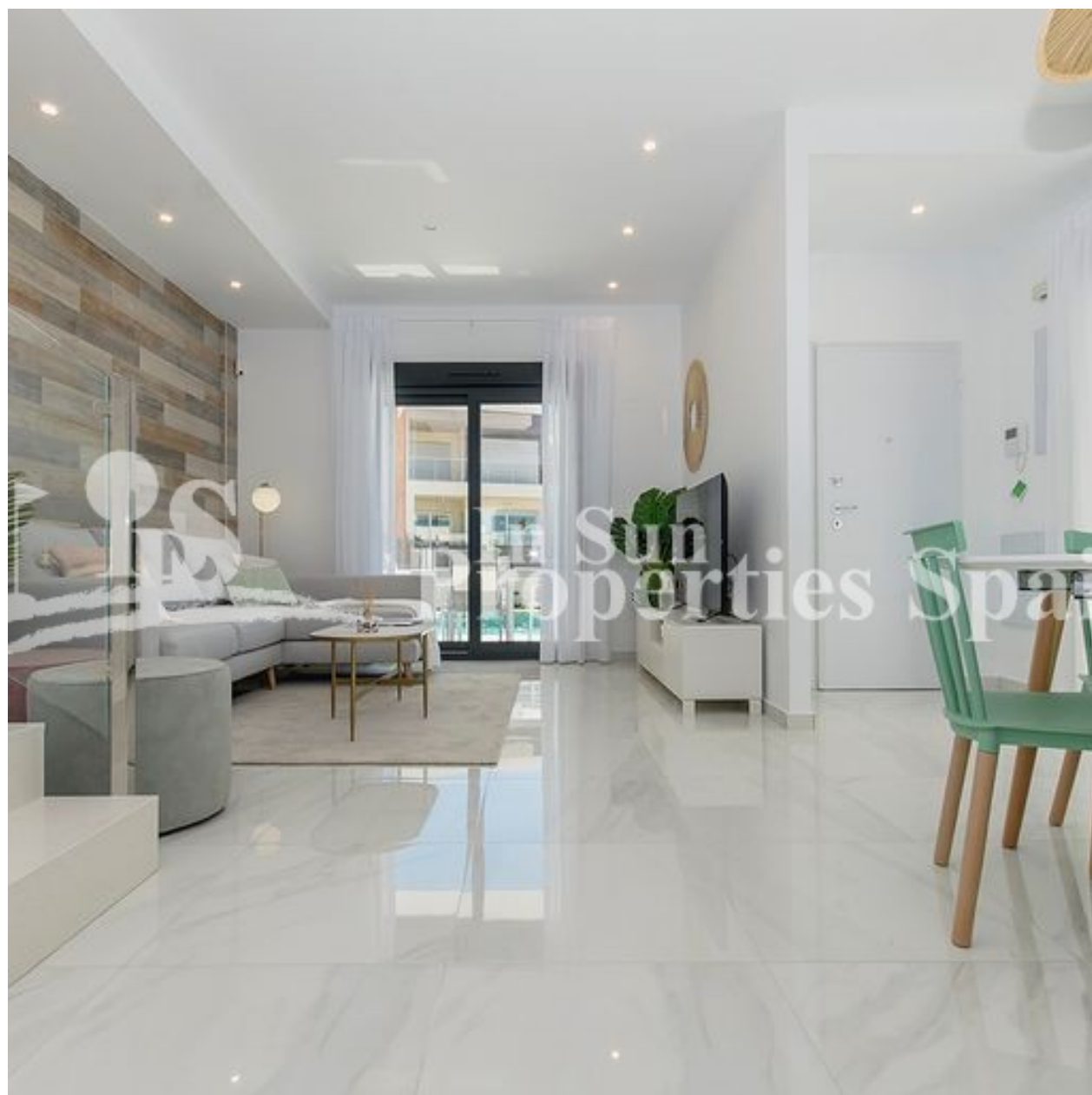
Luxury Detached Villa in Vistabella Golf Resort - SPECIAL OFFER FOR A LIMITED TIME ONLY! ***LIGHTING + SHOWER SCREENS + APPLIANCE PACKAGE INCLUDED FREE OF CHARGE *** This 118m2 new build luxury villa is built over 2 floors and consists of 3 bedrooms, 3 bathrooms, an open plan living room with the kitchen, a 20m2 terrace, a 174m2 private garden, a pool and a parking space. The property also has automated blinds, underfloor heating in the bathrooms, pre-installation of ducted air conditioning, solar panel for hot water, 3 photovoltaic panels for electricity and Energy Performance certification A-class. There is also an option of a solarium at an extra cost. You will find Vistabella Golf between San Miguel and Los Montesinos in the Orihuela Costa. The course is designed so that each player can enjoy it from start to finish. Its undulating streets, strategic bunkers or lakes are some of the features that make it one of the most attractive designs in the area, where every stroke is a challenge and a pleasure for the senses. The 18 Holes of Vistabella Golf, par 72 and more than 6,000 meters in length have been designed following the guidelines of the modern fields with 4 tees of great amplitude in each hole, wide fairways and raised bunkers. The Vistabella golf club house, restaurant, local bars and shops are within 5 minutes walk. The busy town's of San Miguel de Salinas and Los Montesinos are 5 minutes drive away and the lovely blue flag beaches of Guardamar only 15 minutes drive away (20km). There are shopping centers nearby in Torrevieja, the Habaneras shopping centre and only 18 minute drive is

“La Zenia Boulevard” the largest shopping centre in the Alicante region, it’s a one-stop destination for clothes, shoes and general supplies. No matter what you're after, chances are you won't walk out empty-handed. Alicante Airport is 35 minutes away (60km) and Murcia (Corvera) Airport is 45 minutes away.

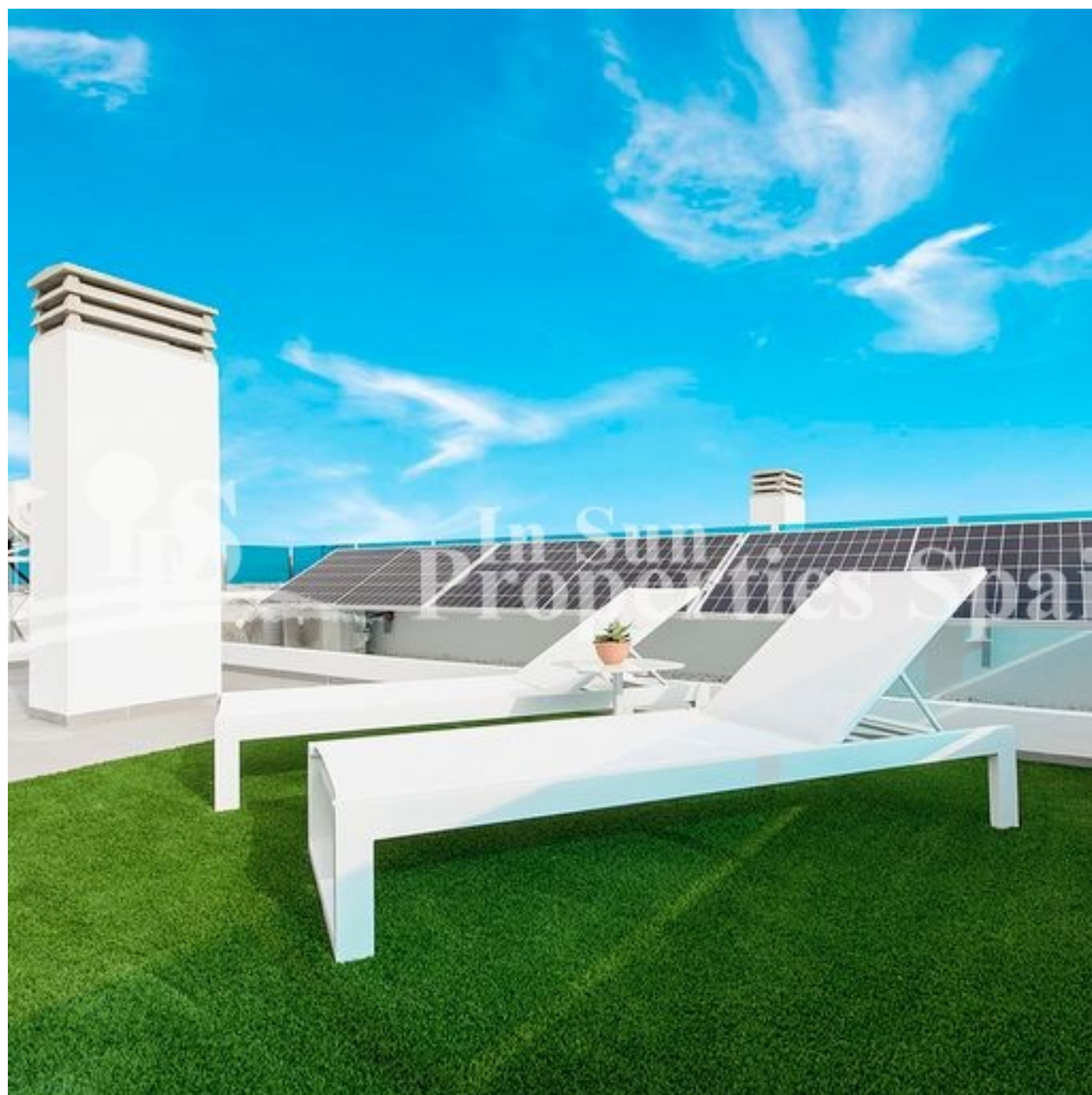
STYLE <ul style="list-style-type: none">• Modern• Contemporary	VIEWS <ul style="list-style-type: none">• Panoramic views	AIRCONDITIONING <ul style="list-style-type: none">• Central airconditioning	DISTANCE TO : <div>Beach : +10 Km</div> <div>Airport: 50 Km</div> <div>Town center : 3 Km</div>
ORIENTATION <div>South west</div>	FURNITURE <ul style="list-style-type: none">• Not furnished	PARKING <div>Parking no Cars: 1</div>	FLOORING <ul style="list-style-type: none">• Tile floors• Stone floors
KITCHEN <ul style="list-style-type: none">• Open kitchen• Equipped kitchen• Granite countertop	GARDEN AND TERRACES <ul style="list-style-type: none">• Covered terrace• Open terrace• Exterior lights• Fenced• Stone walls• Private garden	HEATING <ul style="list-style-type: none">• Floor heating bathrooms	EXTRA <ul style="list-style-type: none">• Reinforced door• Double glazed windows

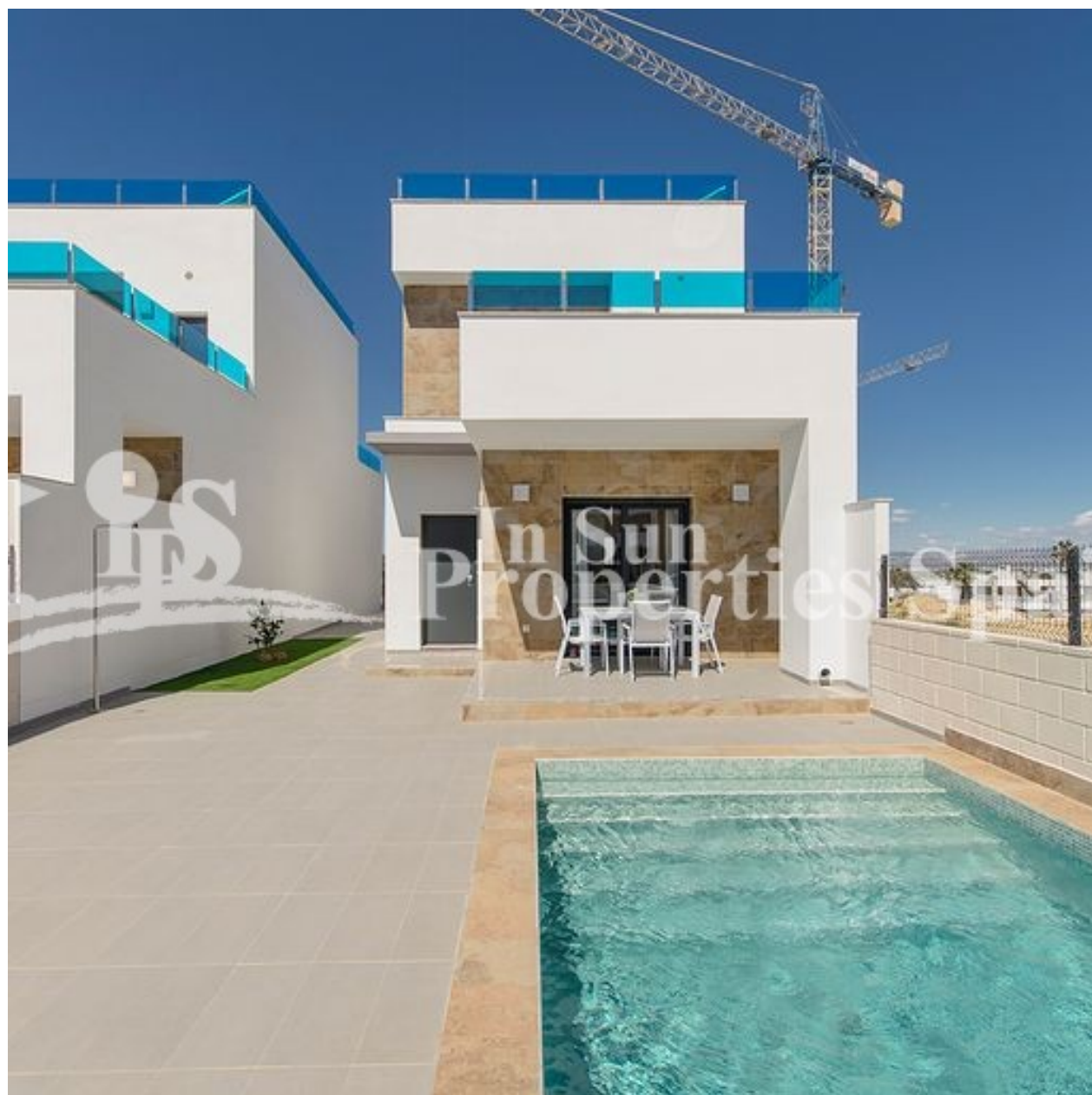








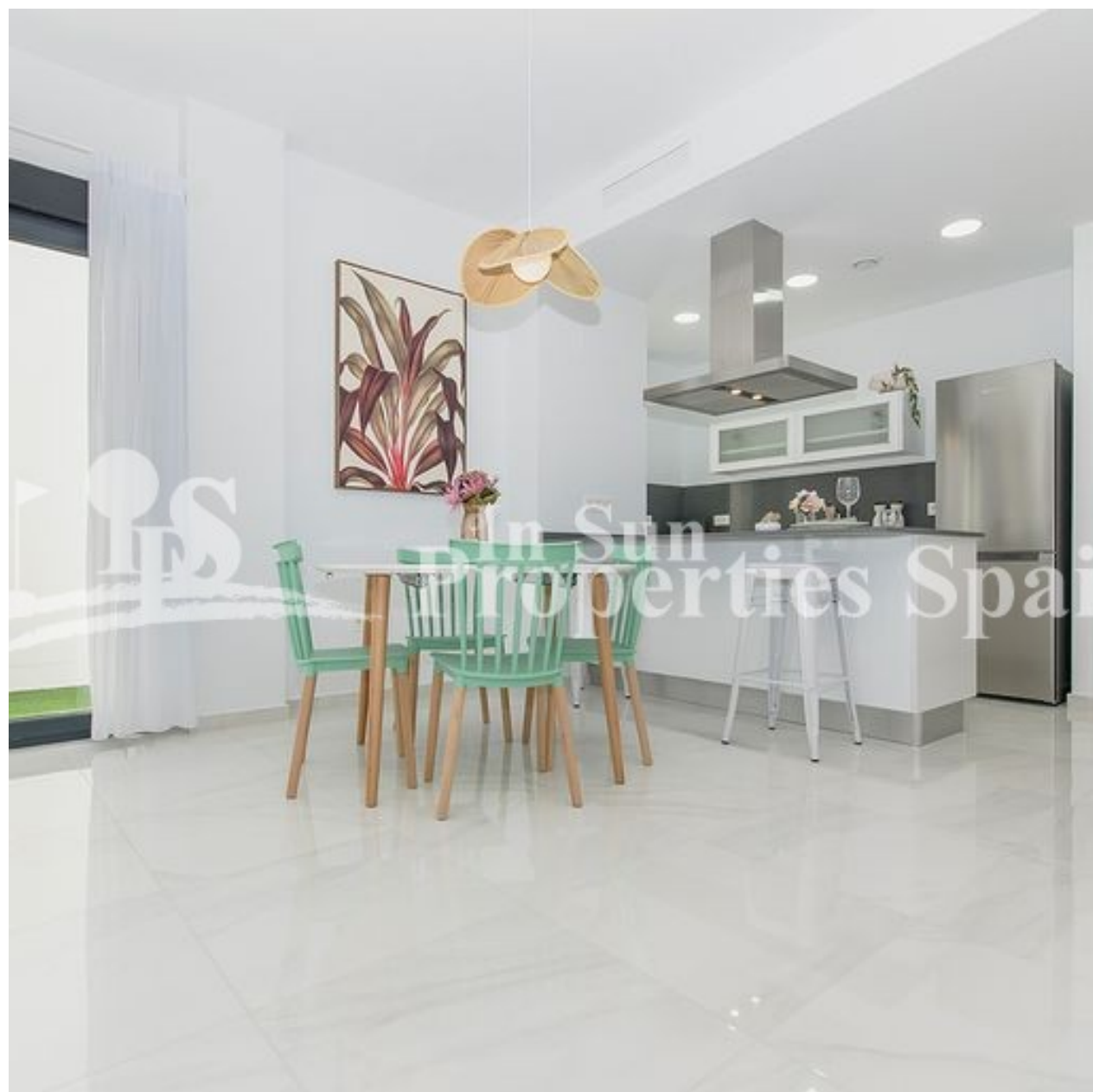






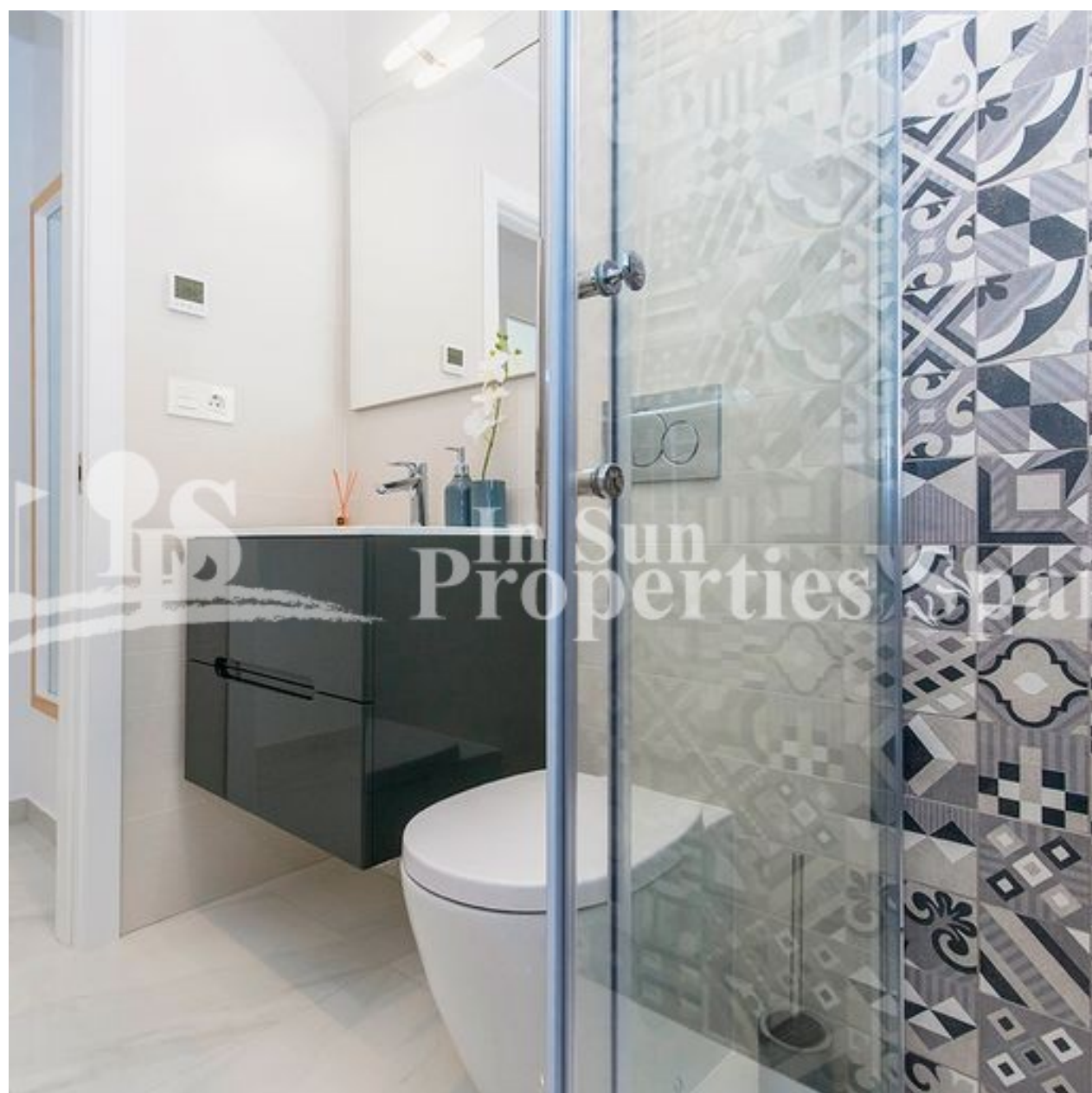
















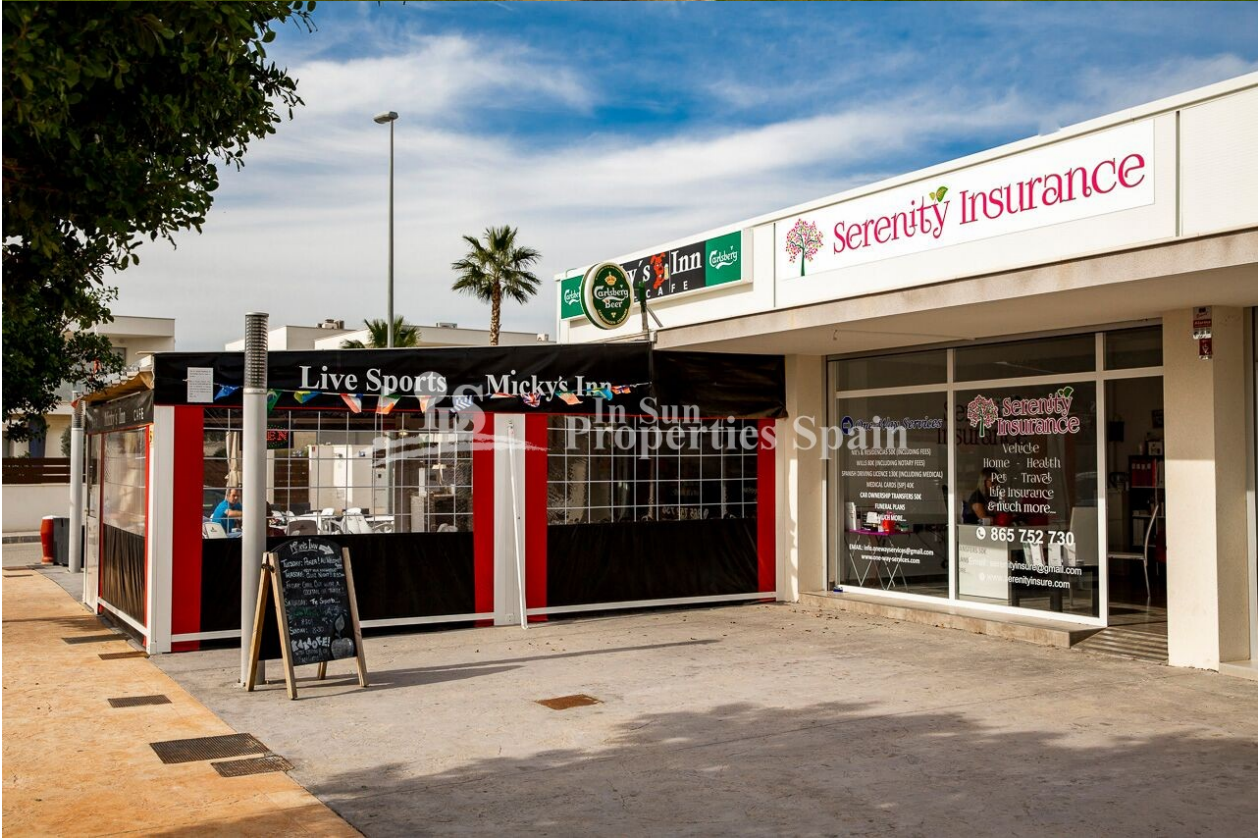














PLANTA BAJA



PLANTA PRIMERA



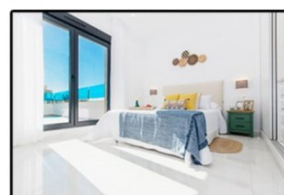
PLANTA CUBIERTAS

SOLARIUM OPCIONAL OPTIONAL SOLARIUM

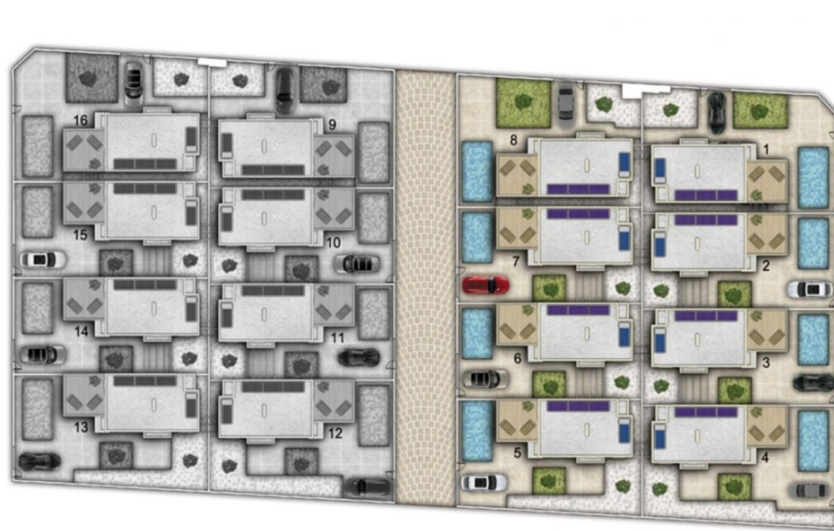
SOLARIUM	46,30 m ²
----------	----------------------

SUPERFICIES

SUP. CONSTRUIDA PB Y P1	118,67 m ²
TERRAZAS	20,70 m ²
TOTAL	139,37 m ²



3 DORMITORIOS + 3 BAÑOS
3 BEDROOMS + 3 BATHROOMS



FASE 1

Parcela/Plot 1	230,29 m2
Parcela/Plot 2	183,77 m2
Parcela/Plot 3	183,74 m2
Parcela/Plot 4	228,18 m2
Parcela/Plot 5	206,61 m2
Parcela/Plot 6	174,09 m2
Parcela/Plot 7	174,09 m2
Parcela/Plot 8	228,34 m2



CONJUNTO RESIDENCIAL DEVELOPMENT PLAN





"Experience our experience - Because you deserve the best"