



REF: # 9935



INFO

| | |
|-----------------------|-----------|
| PRICE: | 375.000 € |
| PROPERTY TYPE: | Villa |
| LOCATION: | |
| BEDROOMS: | 3 |
| Bathrooms: | 2 |
| Build: | 126 (m2) |
| Plot: | 314 (m2) |
| Terrace: | - |
| Year: | - |
| Floor: | - |
| Old price | - |



DESCRIPTION

NEW BUILD VILLAS IN MAR DE CRISTAL New Build one level villa with 3 bedrooms and 2 bathrooms at 500 meters from the Mar De Cristal beaches. Villas has modern open plan kitchen with the living room, where high sliding windows has access to the garden with private swimming pool and parking space. The master bedroom has a dressing room and ensuite bathroom. The villa has also a storage and laundry room. From the big roof terrace you have beautiful sea views. Mar De Cristal is a coastal town in the middle of beautiful nature and nature parks of which you find photo's added. This is one of the most beautiful places in Spain and the whole world. In Mar De Cristal you will find some nice restaurants and a supermarket. The nice restaurants of Los Belones are only 2 km's away, The 36 km beaches of La Manga are a 5 minutes drive. Magical Cabo De Palos and Portman is only a 5 minutes drive. The big shopping centre of Cartagena is less than a 10 minutes drive. Murcia Corvera airport is 30 minutes away, Alicante airport 55 minutes.

VIEWS

- Panoramic views

**GARDEN AND
TERRACES**

- Open terrace
- Private garden

EXTRA

- Reinforced door







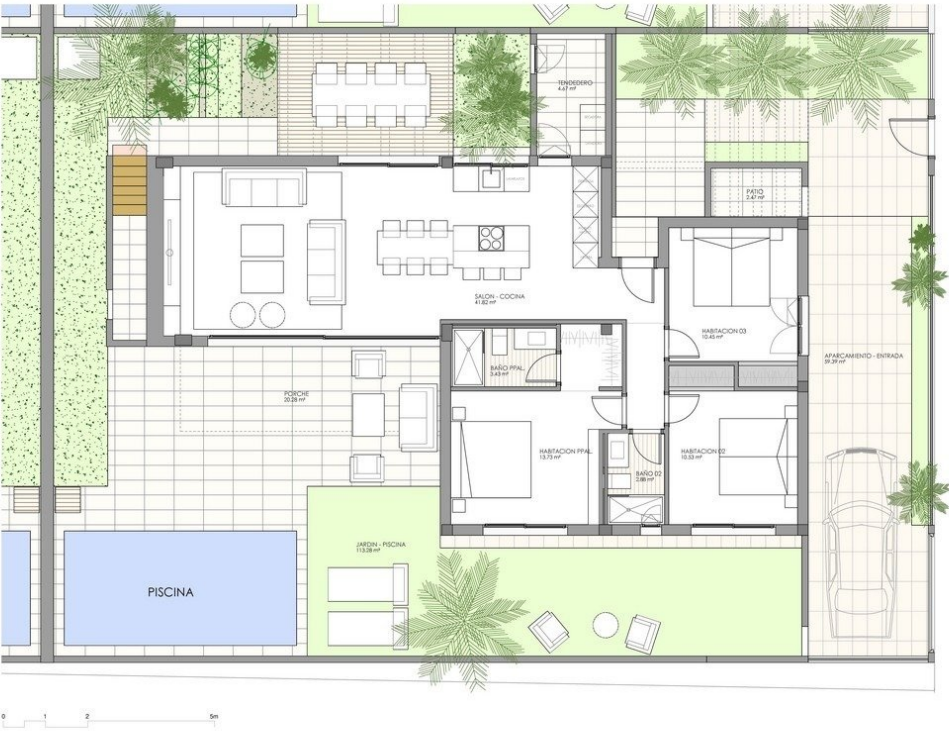








VIVIENDA 05

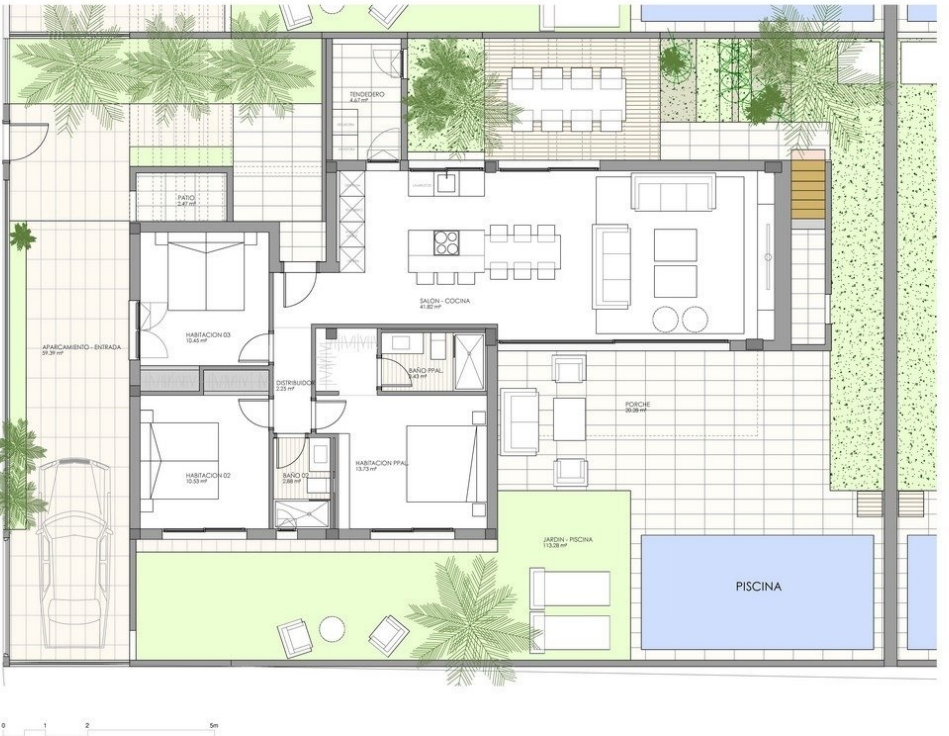


| SUPERFICIES UTILES VILLA TIPO | |
|-------------------------------|---------|
| SALON - COCINA | 41.8 m² |
| HAB. PRINCIPAL | 13.7 m² |
| HABITACION 02 | 10.5 m² |
| HABITACION 03 | 10.4 m² |
| DISTRIBUIDOR | 2.2 m² |
| BAÑO PRINCIPAL | 3.4 m² |
| BAÑO 02 | 2.8 m² |
| TENEDERO | 4.6 m² |
| PATIO | 2.4 m² |
| | 91.8 m² |

| SUPERFICIE CONSTRUIDA VILLA TIPO | |
|--|-----------|
| AREA | 126.53 m² |
| *Incluye el porche cubierto y la escalera. | |

| SUPERFICIES EXTERIORES VILLA TIPO | |
|-----------------------------------|----------|
| PORCHE | 20.2 m² |
| JARDIN - PISCINA | 111.9 m² |
| APARCAMIENTO - ENTRADA | 59.39 m² |
| SOLARIUM | 65.1 m² |

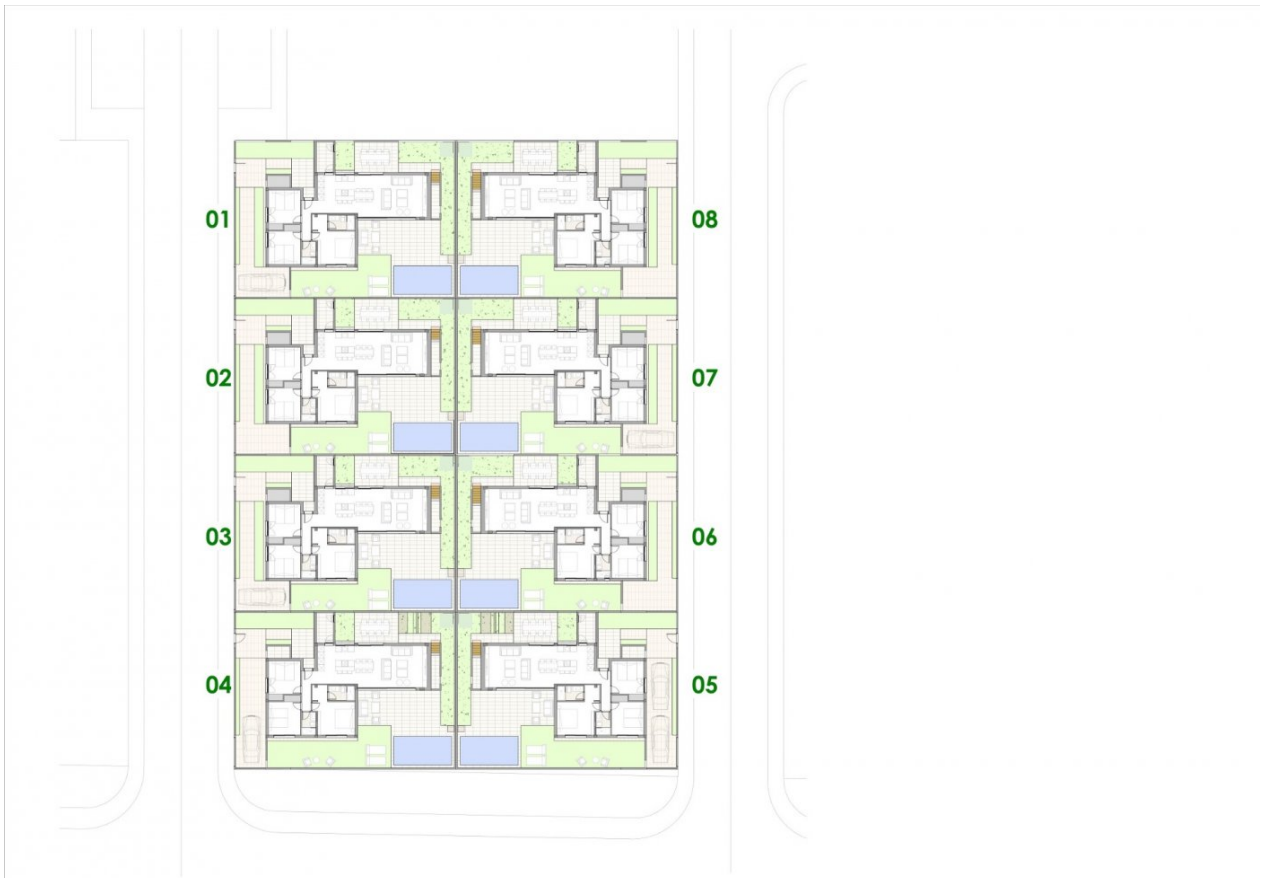
VIVIENDA 04



| SUPERFICIES UTILES VILLA TIPO | |
|-------------------------------|---------|
| SALON - COCINA | 41.8 m² |
| HAB. PRINCIPAL | 13.7 m² |
| HABITACION 02 | 10.5 m² |
| HABITACION 03 | 10.4 m² |
| DISTRIBUIDOR | 2.2 m² |
| BAÑO PRINCIPAL | 3.4 m² |
| BAÑO 02 | 2.8 m² |
| TENEDERO | 4.6 m² |
| PATIO | 2.4 m² |
| | 91.8 m² |

| SUPERFICIE CONSTRUIDA VILLA TIPO | |
|--|-----------|
| AREA | 126.53 m² |
| *Incluye el porche cubierto y la escalera. | |

| SUPERFICIES EXTERIORES VILLA TIPO | |
|-----------------------------------|----------|
| PORCHE | 20.2 m² |
| JARDIN - PISCINA | 111.9 m² |
| APARCAMIENTO - ENTRADA | 59.39 m² |
| SOLARIUM | 65.1 m² |



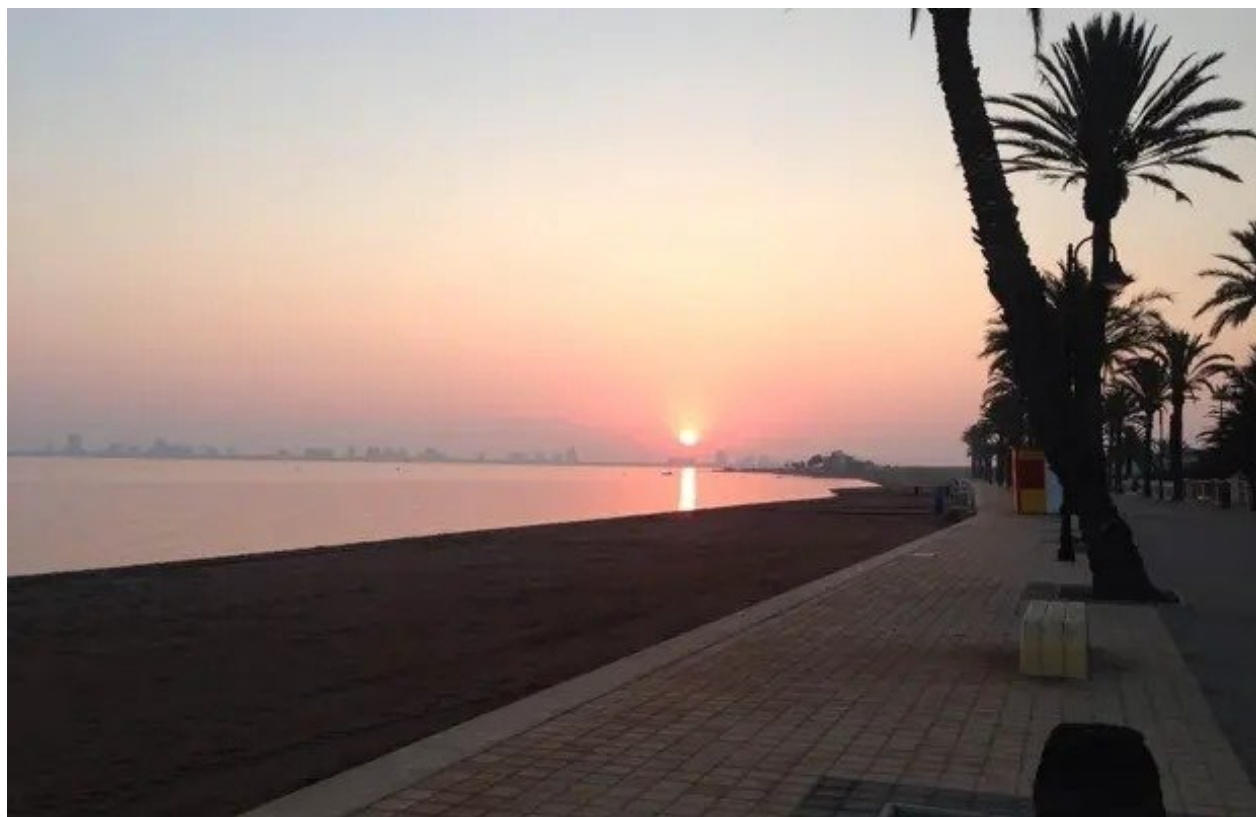
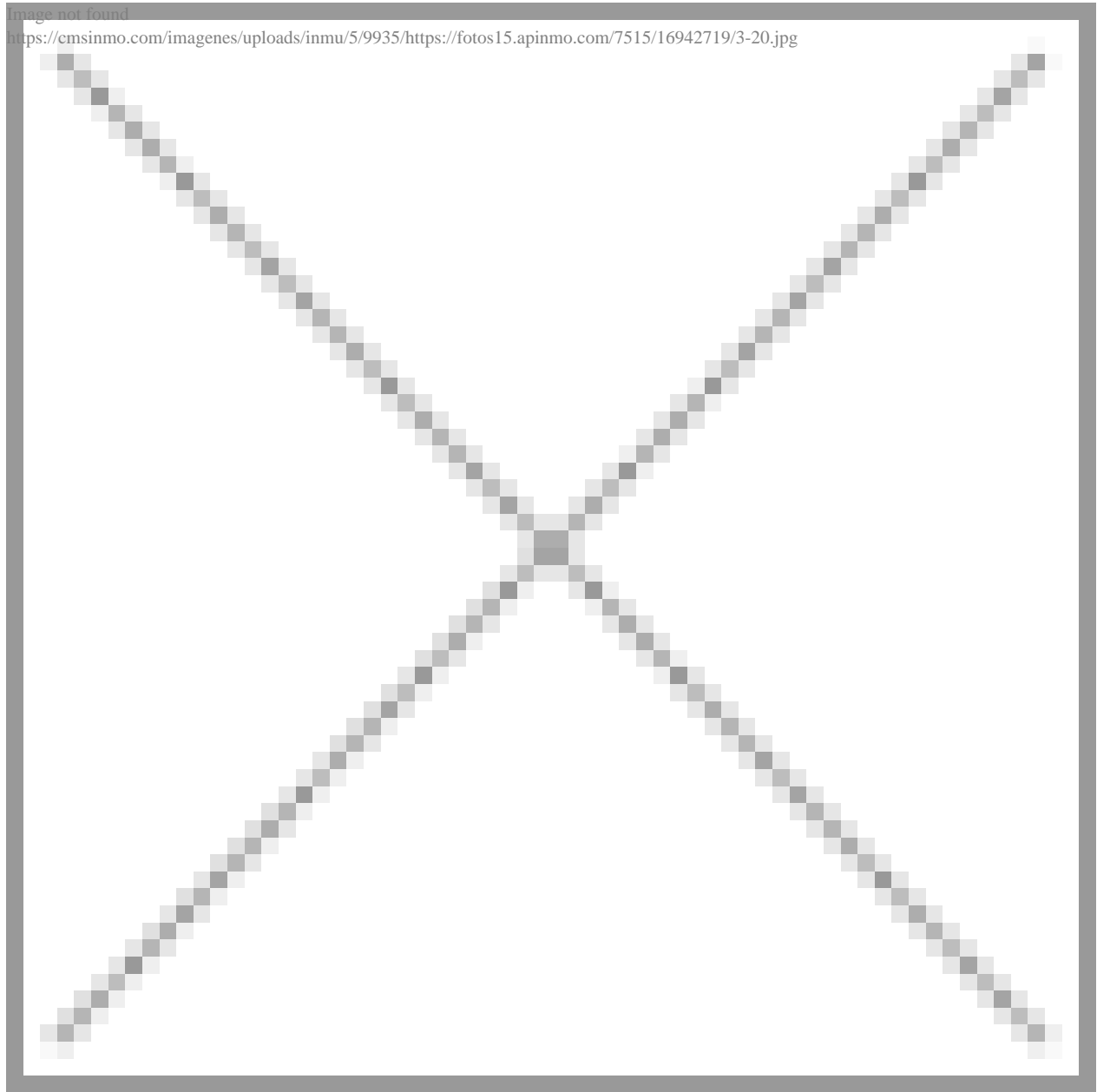


Image not found

<https://cmsinmo.com/imagenes/uploads/inmu/5/9935/https://fotos15.apinmo.com/7515/16942719/3-20.jpg>



"Experience our experience - Because you deserve the best"