



REF: # 9944

()



INFO

PRICE: 239.000 €

PROPERTY TYPE: Apartment (Penthouse)

LOCATION: ()

BEDROOMS: 2

Bathrooms: 2

Build: 74 (m2)

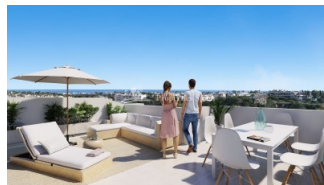
Plot: -

Terrace: 56 (m2)

Year:

Floor: -

Old price -



DESCRIPTION

FANTASTIC COMPLEX RESIDENTIAL OF NEW BUILD APARTMENTS PENTHOUSE IN VILLAMARTIN ORIHUELA COSTA with communal pool. This 74m2 penthouse apartment consists of 2 bedrooms, 2 bathrooms, an open plan kitchen with living room, a 11,90 m2 private terrace and a 43,60m2 solarium. The communal areas are approximately 3.300 m2 and have WIFI, 2 swimming pools, a Jacuzzi and 2 Petanque courts. This residential consists of 94 apartments and is located in Las Filipinas which is in the area of Villamartin Golf on the Orihuela Costa and has been designed to meet the needs of those looking for a Mediterranean lifestyle in a quiet but well established area close to the sea and all amenities. Villamartin was built around one of the most prestigious golf courses on the Costa Blanca "Villamartin Golf Club" and is home to a cosmopolitan and International with one of the healthiest climates in the world. Just a short distance away you can find four other golf courses such as Las Ramblas, Campoamor, Las Colinas and La Finca. It is also home to some of the best blue flag beaches in the region like La Zenia, Cabo Roig and Campoamor only 5km drive away. The area offers such a wide range of services including weekly markets, the renowned high standard international school "El Limonar" and the famous "La Zenia Boulevard" centre, the largest of its kind in southern Spain! Situated close to many commercial centres including the well know Villamartin Plaza and La Fuente Centre along with many restaurants, fashion shops, supermarkets, banks, pharmacies and much more that you really are spoilt for choice. The area is not just a golfer's paradise you can find a large range of activities and entertainment for all the family to enjoy, so, whether you are looking for a holiday home, a Golf property or a

permanent residence, this development offers everything you could possibly need! The complex is located only 40 minutes from Alicante Airport and 1 hour from Murcia (Corvera) Airport.

STYLE

- Modern

VIEWS

- Panoramic views

DISTANCE TO :

Beach : 5 Km

Airport: 70 Km

PARKING

Parking no Cars: 1

KITCHEN

- Open kitchen

GARDEN AND TERRACES

- Covered terrace
- Communal Garden

EXTRA

- Outdoor jacuzzi
- Built in wardrobes
- Reinforced door
- Lift















12	Piscina adults	Adult pool	Piscina adults	79	Buñuelos	Mallowes	Berles aux lettres
65	Piscina infantil	Children pool	Piscina infantil	81	Salle appartements	Parking exit	Sortie parking
66	Entrada peatonal	Entrance	Entrée	85	Accès peatonal a	Accession peonnel	Accession peonnel
67	Entrada aparcamiento	Parking entrance	Entrée parking	90	Duchas	Showers	Douche
74	Jacuzzi	Jacuzzi	Jacuzzi	114	Juegos pelanca	Games pelanca	Jeux pelanca
76	Aparcamiento bici	Bike parking	Parking a bikes	121	Centro de	Distribution	Transformer

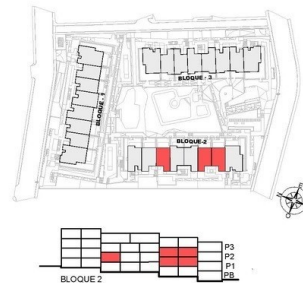
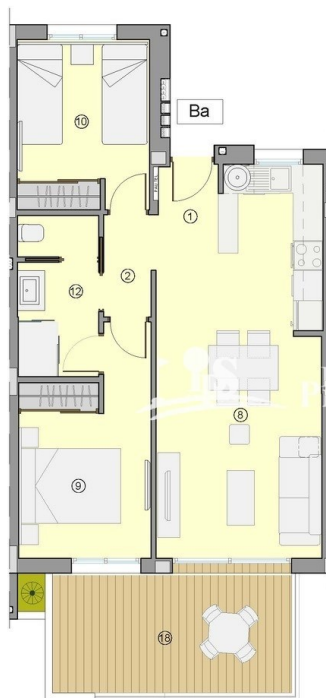


PLANTA GENERAL DE URBANIZACIÓN
GENERAL PLAN OF URBANIZATION
PLAN GÉNÉRAL D'URBANISATION



PLANTA SUJETA A POSIBLES MODIFICACIONES POR RAZONES O EXIGENCIAS DE ORDEN TÉCNICO O JURÍDICO. LAS SUPERFICIES SON APROXIMATIVAS.
Plans subject to possible modifications for technical or legal reasons. Measurements shown are approximate.
Plan soumis à modifications en fonction des besoins ou exigences d'ordre technique ou juridique. Les surfaces sont approximatives.

DICIEMBRE / DECEMBER / DÉCEMBRE 2021



nº	SUPERFICIES ÚTILES / FLOOR AREA / SURFACES UTILES	TIPO / TYPE / TYPE
1	VESTIBULO / HALL / ENTRÉE	Ba
2	DISTRIBUIDOR / CORRIDOR / CIRCULATION	
3	SALON-COMEDOR-COCINA / LIVING-DINING ROOM- KITCHEN /	
4	SALON-SALLE A MANGER- CUISINE	
5	DORMITORIO 1 / BEDROOM 1 / CHAMBRE 1	
6	DORMITORIO 2 / BEDROOM 2 / CHAMBRE 2	
7	BANIO 1 / BATHROOM 1 / SALLE DE BAINS 1	
TOTAL SUP. ÚTILES / TOTAL FLOOR AREA / TOTAL SURFACES UTILES		53,28 m²
SUP. CONSTRUIDA INTERIOR / BUILT INTERIOR AREA / SURFACE CONSTRUITE IN TÈRIEUR		62,80 m²
8	SUP. CONSTRUIDA TERRAZA CUBIERTA 1 / BUILT COVERED 1 AREA / SURFACE CONSTRUITE TERRASSE COUVERTE	13,51 m²
TOTAL SUP. CONSTRUIDA PRIVADA / TOTAL BUILT PRIVATE AREA / TOTAL SURFACE CONSTRUITE PRIVATIVE		76,31 m²

TIPO/TYPE/TYPER Ba

MARZO / MARCH / MARS 2022

TIPO Ba: APARTAMENTO. 2 DORMITORIOS + 1 BAÑO. PLANTA 1 Y 2.
TYPE Ba: APARTMENT. 2 BEDROOMS + 1 BATHROOM. FIRST AND SECOND FLOOR.
TYPE Ba: APPARTEMENT. 2 CHAMBRES + 1 BAIN. PREMIER ET DEUXIÈME ÉTAGE.



Plano sujeto a posibles modificaciones por razones o exigencias de índole técnica o jurídica. Las superficies son aproximativas. Cocina y amueblamiento orientativo, sin valor contractual.
Plans subject to possible modifications for technical or legal reasons. Measurements shown are approximate. Kitchen and furnishings are for display purposes only, with no contractual value.
Plan soumis à modifications en fonction des besoins ou exigences d'ordre technique ou juridique. Les surfaces sont approximatives. Cuisine et amuebllement indicatifs, sans valeur contractuelle.













"Experience our experience - Because you deserve the best"