



**In Sun  
Properties Spain**  
since 1999

REF: # 12590



#### INFO

PRIS:	289.000 €
FASTIGHETSTYP:	Lägenhet
CITY:	
SOVRUM:	2
badrum:	2
Byggnad:	72 (m2)
Area:	-
Terrass:	-
År:	-
Våning:	-
Billigt	-



#### BESKRIVNING

On sale now!!! Phase III of this Mordena and new development of apartments and penthouses on the beachfront in Las Marinas, Dénia. Apartments with 2 and 3 bedrooms, 2 bathrooms, equipped open kitchen, pre-installation of ducted air conditioning, etc. Apartments from €289,000+VAT QUALITY MEMORIES: •Reinforced concrete structure. •Façade with a single-layer finish combined with porcelain or similar. •PVC exterior carpentry with thermal break, double glazing with "Climalit" type air chamber and low emissives. •Motorized exterior blinds in living room and bedrooms •Armored entrance door to the house. •Porcelain interior flooring or similar, the skirting board will be lacquered to match the interior carpentry. •Vertical walls of bathrooms and toilets in porcelain or similar. •Wall finishes in smooth plastic paint. •Kitchen with high and low furniture, Silestone countertop or similar equipped with extractor hood, hob induction and electric oven. •Suspended vitrified porcelain sanitary fixtures with built-in cistern. •Flat resin shower trays with screen. •Sink with cabinet and mirror in all bathrooms and toilets. •Single-lever faucet. •Built-in lined wardrobes, distributed with hanging bar, drawers and interior LED lighting. •Production of domestic hot water by Aerothermal, which provides renewable and non-polluting energy, with lower energy consumption. •Outdoor fixtures and electrical and TV outlets on terraces of homes and solariums. •Automatic Video Intercom connection with the main entrance to the complex and at the access to each hallway. •Pre-installation of air conditioning through ducts in the living room and bedrooms. •Curtains in living room and bedrooms. •USB chargers in bedrooms. •Fully fenced urbanization with large

garden common areas, two swimming pools, one for children's use. Outdoor parking for bicycles. •Pre-installation for recharging vehicles in the parking lot according to regulations. \*\*\*\*\* This quality report is merely informative, subject to possible changes of a technical, legal, commercial and/or execution of the work\*\*\*\*\* Estimated delivery date for July 2025.

VYER

- Paronama















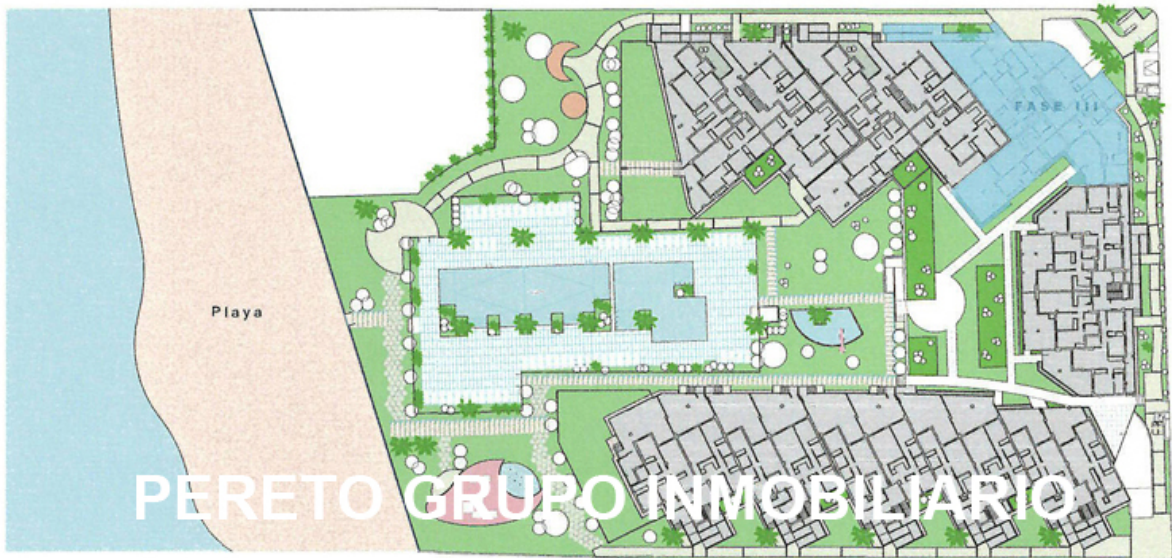




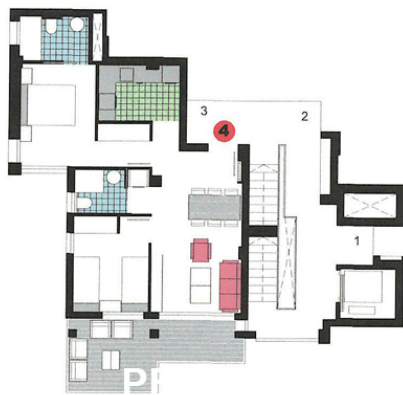




Calle Maracaibo



Planta Conjunto



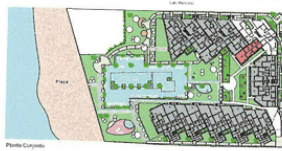
ESCAL C



**BLOQUE 2**  
**VIVIENDA 4 - ESC.C**  
**Planta Segunda**

SUPERFICIE APROXIMADAS	m2
VIVIENDA TIPO.....	62.27
TERRAZA CUBIERTA.....	3.99
ELEM. COMUNES.....	5.69
SUPERFICIE CONSTRUIDA.....	71.95
+TERRAZA DESCUBIERTA.....	7.96





ESCAL C



**BLOQUE 2  
VIVIENDA 2 - ESC.C  
Planta Segunda**

SUPERFICIE APROXIMADAS	m2
VIVIENDA TIPO.....	72.05
TERRAZA CUBIERTA.....	12.18
ELEM. COMUNES.....	6.91
SUPERFICIE CONSTRUIDA.....	91.14
+TERRAZA DESCUBIERTA.....	4.06



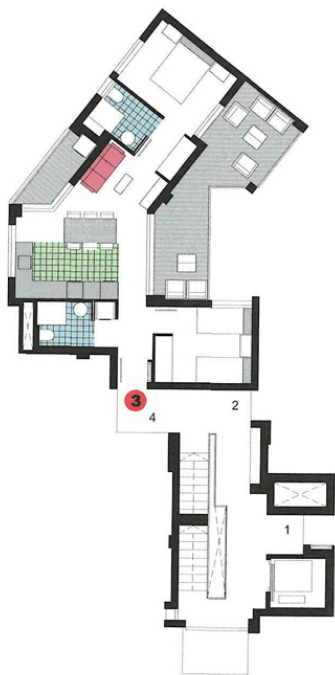
ESCAL C



**BLOQUE 2  
VIVIENDA 1 - ESC.C  
Planta Segunda**

SUPERFICIE APROXIMADAS	m2
VIVIENDA TIPO.....	65.53
TERRAZA CUBIERTA.....	12.07
ELEM. COMUNES.....	6.33
SUPERFICIE CONSTRUIDA.....	83.93
+TERRAZA DESCUBIERTA.....	1.70

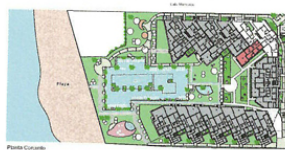




**BLOQUE 2  
VIVIENDA 3 - ESC.C  
Planta Primera**

SUPERFICIE APROXIMADAS	m2
VIVIENDA TIPO.....	60.43
TERRAZA CUBIERTA.....	18.16
ELEM. COMUNES.....	6.15
SUPERFICIE CONSTRUIDA.....	84.74
+TERRAZA DESCUBIERTA.....	0.98

ESCAL C



**BLOQUE 2  
VIVIENDA 2 - ESC.C  
Planta Primera**

SUPERFICIE APROXIMADAS	m2
VIVIENDA TIPO.....	72.05
TERRAZA CUBIERTA.....	12.66
ELEM. COMUNES.....	6.93
SUPERFICIE CONSTRUIDA.....	91.64
+TERRAZA DESCUBIERTA.....	1.61

ESCAL C



*"Experience our experience - Because you deserve the best"*