



REF: # 13195



#### INFO

PRIS:	675.000 €
FASTIGHETSTYP:	Villa
CITY:	
SOVRUM:	3
badrum:	3
Byggnad:	155 (m2)
Area:	321 (m2)
Terrass:	-
År:	-
Våning:	-
Billigt	-



#### BESKRIVNING

Four exclusive single-family homes for sale and under construction, distinguished by their modern and functional design. Each home will have access to the large community pool, ideal for relaxing and enjoying the Mediterranean climate, but will also feature its own south-facing private garden, ensuring privacy and natural light throughout the day. Details that make the difference: These homes are designed to offer maximum comfort: 3 bedrooms and 3 bathrooms, ideal for families or those seeking spacious and versatile areas. Plots ranging from 220 m<sup>2</sup> to 320 m<sup>2</sup>, offering ample space and possibilities to customize your outdoor area. Construction with top-quality materials, carefully selected to ensure durability, style, and sustainability. Each home includes its own private garden and independent parking, ensuring comfort and security. A home with everything you need just a step away from the center of Denia, you'll be close to restaurants, shops, beaches, and all the services that make this city so special. At the same time, you'll enjoy the tranquility of a residential neighborhood designed for your rest and well-being. First delivery by the end of summer 2025 and units in January 2026. PRICES: PLOT 15: 695.000 € PLOT 16: 675.000 € PLOT 17: 675.000 € PLOT 18: 710.000 €

**VYER**

- Paronama

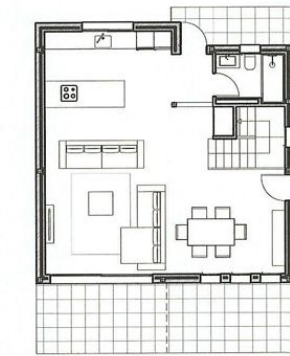
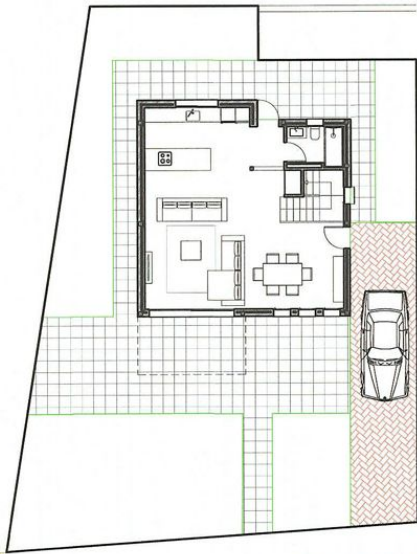
**PARKERING**

garage inga bilar : 1

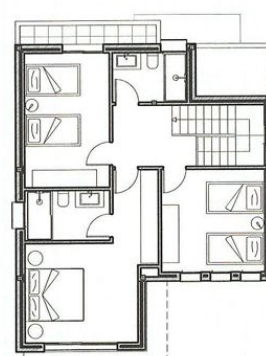






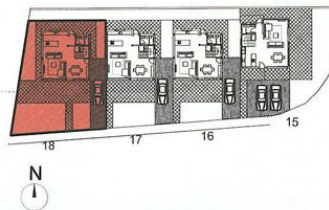


PLANTA BAJA

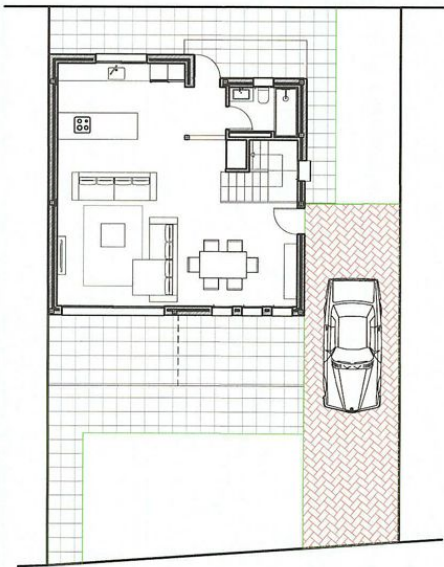


PLANTA ALTA

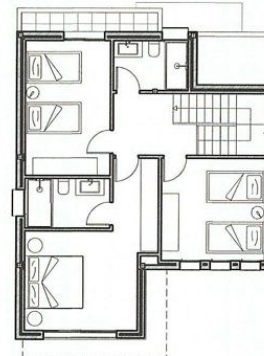
Escala 1/100



Nº18. 710 000€	
CUADRO DE SUPERFICIES	
SUBPARCELA 3.4.18	86,00 m <sup>2</sup>
Ocupación Vivienda	41,35 m <sup>2</sup>
JARDIN	78,10 m <sup>2</sup>
ZONA ACCESO Y PARKING	78,10 m <sup>2</sup>
OTRO	86,00 m <sup>2</sup>
<b>TOTAL SUPERFICIE PARCELA</b>	<b>321,00 m<sup>2</sup></b>
PLANTA BAJA	
VIVIENDA	75,00 m <sup>2</sup>
TERRAZA CUBIERTA	11,00 m <sup>2</sup>
TERRAZA DESCUBIERTA	86,00 m <sup>2</sup>
PLANTA ALTA	
VIVIENDA	69,00 m <sup>2</sup>
TERRAZA DESCUBIERTA	69,00 m <sup>2</sup>
<b>TOTAL SUPERFICIE VIVIENDA</b>	<b>155,00 m<sup>2</sup></b>



PLANTA BAJA

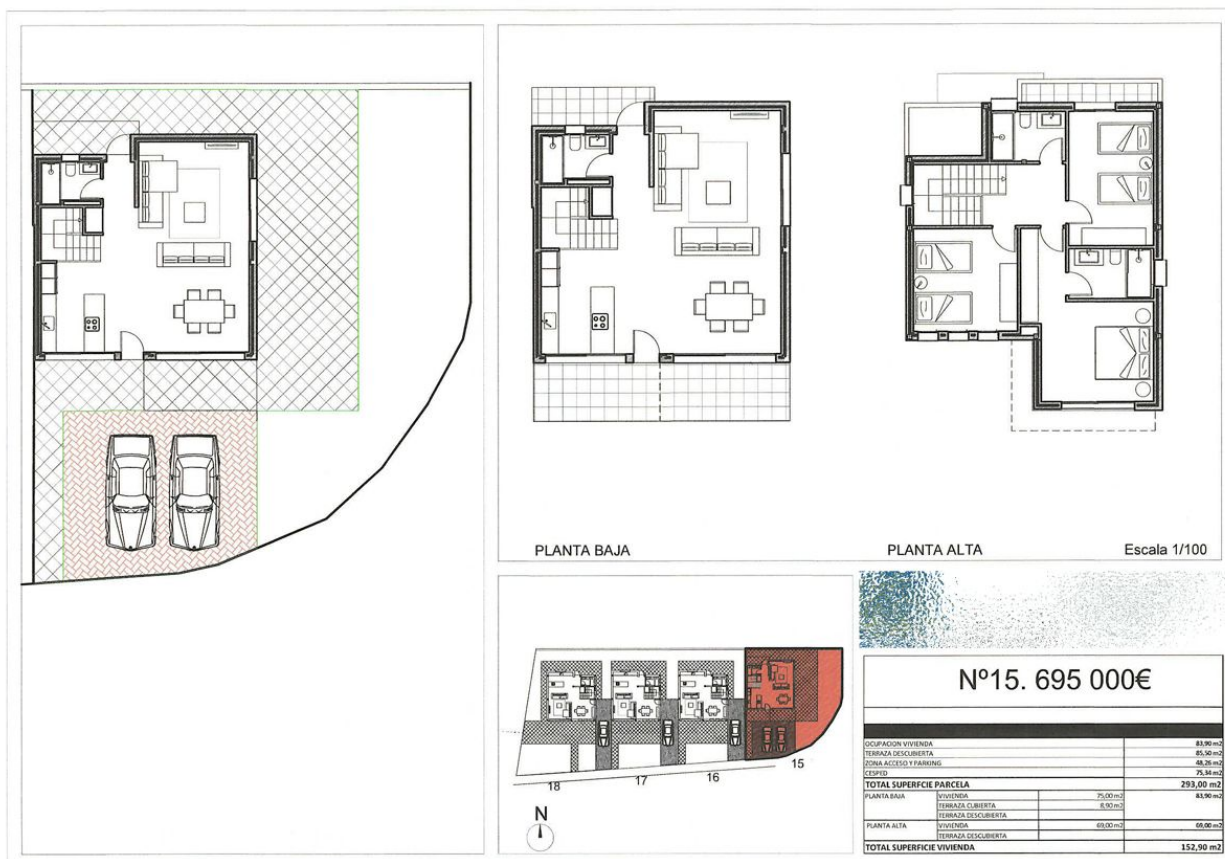
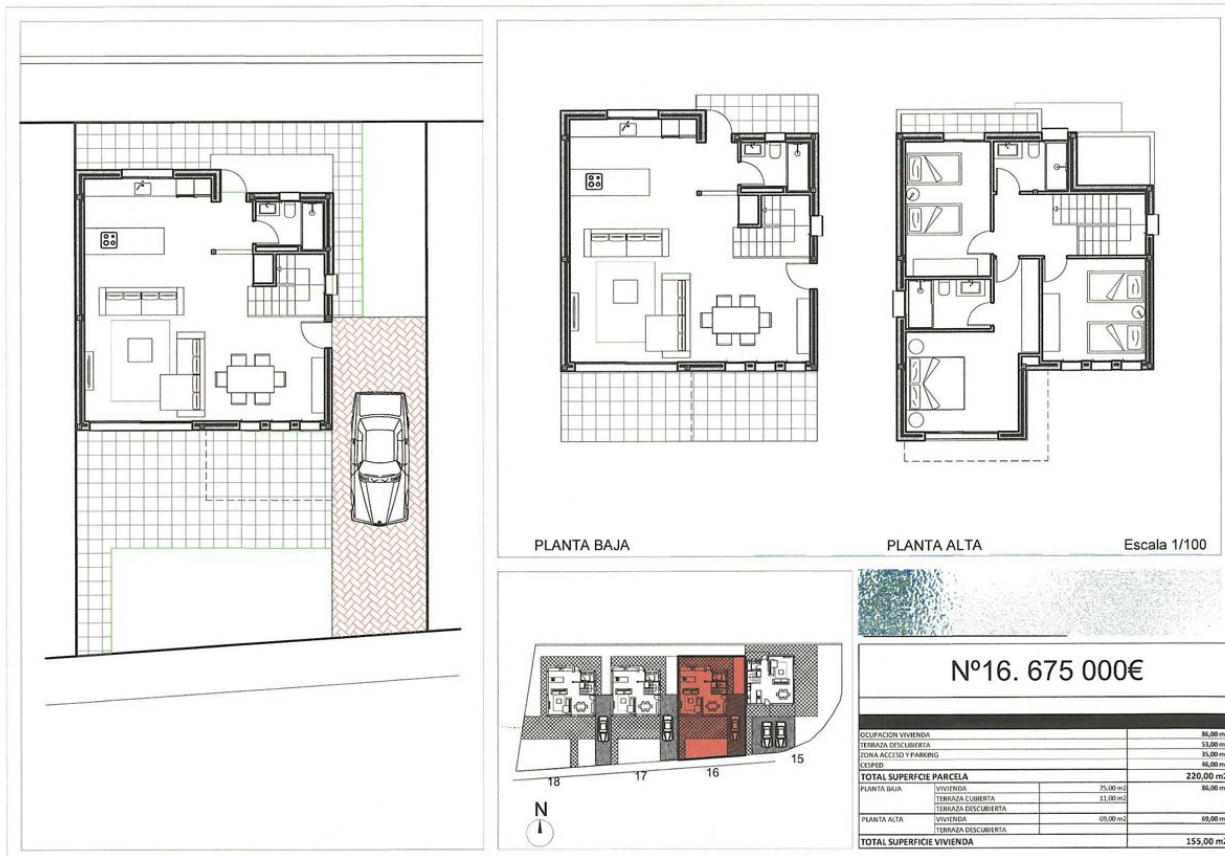


PLANTA ALTA

Escala 1/100



Nº17. 675 000€	
Ocupación Vivienda	86,00 m <sup>2</sup>
TERRAZA DESCUBIERTA	54,40 m <sup>2</sup>
ZONA ACCESO Y PARKING	38,00 m <sup>2</sup>
OTRO	41,50 m <sup>2</sup>
<b>TOTAL SUPERFICIE PARCELA</b>	<b>239,00 m<sup>2</sup></b>
PLANTA BAJA	
VIVIENDA	75,00 m <sup>2</sup>
TERRAZA CUBIERTA	11,00 m <sup>2</sup>
TERRAZA DESCUBIERTA	86,00 m <sup>2</sup>
PLANTA ALTA	
VIVIENDA	69,00 m <sup>2</sup>
TERRAZA DESCUBIERTA	69,00 m <sup>2</sup>
<b>TOTAL SUPERFICIE VIVIENDA</b>	<b>155,00 m<sup>2</sup></b>



*"Experience our experience - Because you deserve the best"*