



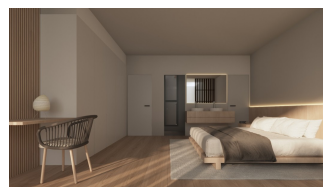
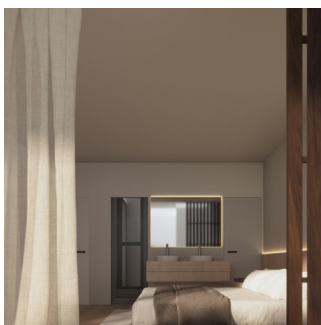
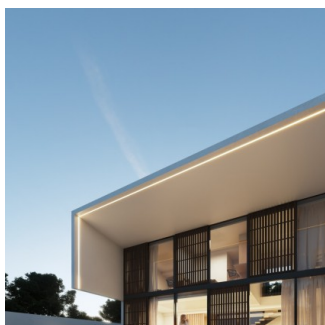
**In Sun
Properties Spain**
since 1999

REF: # 8859



INFO

PRIS:	1.390.000 €
FASTIGHETSTYP:	Villa
CITY:	
SOVRUM:	3
badrum:	3
Byggnad:	339 (m2)
Area:	480 (m2)
Terrass:	-
År:	-
Våning:	-
Billigt	-



BESKRIVNING

This exclusive modern design villa in Playa de Albir, Alfàs del Pi, Costa Blanca, is a newly built home that combines luxury, comfort and an unbeatable location, just a 15minute walk from the beach, with delivery scheduled for December 2024. The property has a constructed area of 339 m² on a plot of 480 m², with a Mediterranean garden and a heated swimming pool. On the ground floor, an open space that combines a living room, dining room and kitchen with large windows and a double height that fills the entire house with natural light, connecting the interiors with the exteriors through interior patios, as well as including a garage with direct access to the house. On the first floor there are 3 ensuite bedrooms with access to a private terrace and a spectacular solarium with views of Puig Campana, the Sierra Bernia and the Sierra Helada. The semibasement floor offers 90 m² of customizable space for a gym, games room or more bedrooms. Among the outstanding features are underfloor heating, hot/cold air conditioning, home automation system and alarm, as well as top quality finishes. This villa offers a privileged environment with contemporary design and all the necessary amenities for maximum comfort. Contact us for more information or to arrange a viewing and discover your new luxury home!













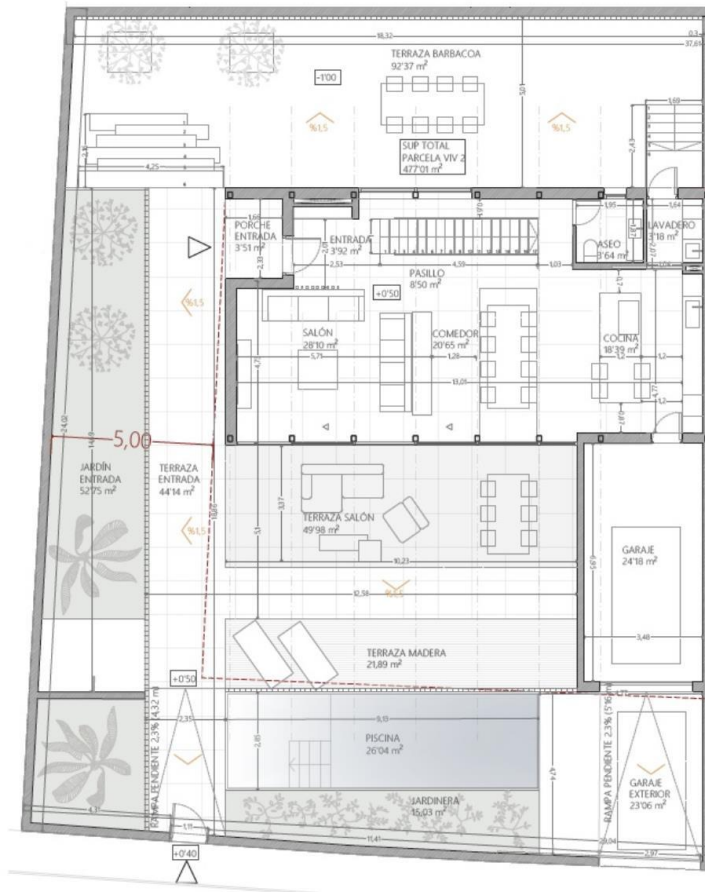




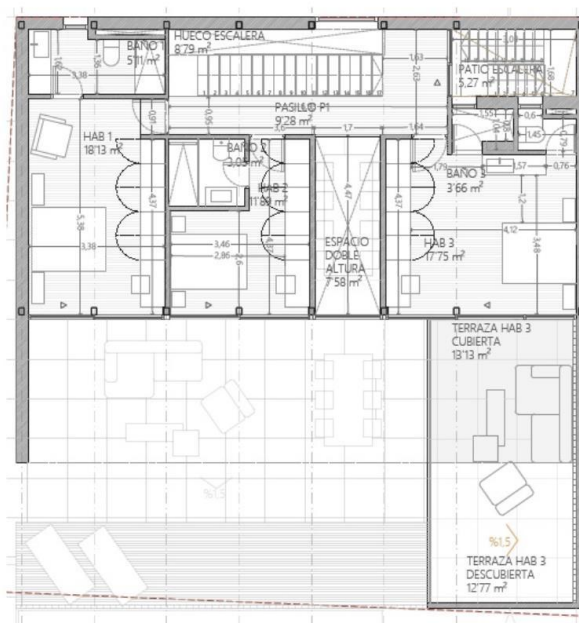








VIVIENDA 2	
Estancia	Sup Útiles
Planta Baja	
EXTERIOR	
Terraza salón	49.98 m²
Terraza piscina madera	21.89 m²
Garaje exterior	23.06 m²
Terraza BBQ -1	92.37 m²
Terraza Pisable entrada	44.14 m²
TOTAL ÚTIL:	231.44 m²
INTERIOR	
Cocina	18.39 m²
Aseo	3.64 m²
Circulaciones PB	8.50 m²
Comedor	20.65 m²
Salón	28.10 m²
Hall	3.92 m²
Recibidor	3.51 m²
Lavadero	3.18 m²
Garaje	23.15 m²
TOTAL ÚTIL:	113.03 m²



VIVIENDA 2	
Estancia	Superficies útiles
Planta Primera	
EXTERIOR	
Terraza garaje cubierta	13,13 m²
Terraza garaje descubierta	12,79 m²
Patio escalera acceso solárium	5,27 m²
TOTAL ÚTIL:	31,19 m²
INTERIOR	
Pasillo P1	9,28 m²
Dormitorio 1	18,13 m²
Baño 1	5,11 m²
Dormitorio 2	11,89 m²
Baño 2	3,05 m²
Dormitorio 3	17,75 m²
Baño 3	3,66 m²
Doble altura escalera	3,38 m²
Doble altura comedor	7,58 m²
TOTAL ÚTIL:	79,83 m²

Image not found
<https://cmsinmo.com/imagenes/uploads/inmu/4/8859/158859.jpg>

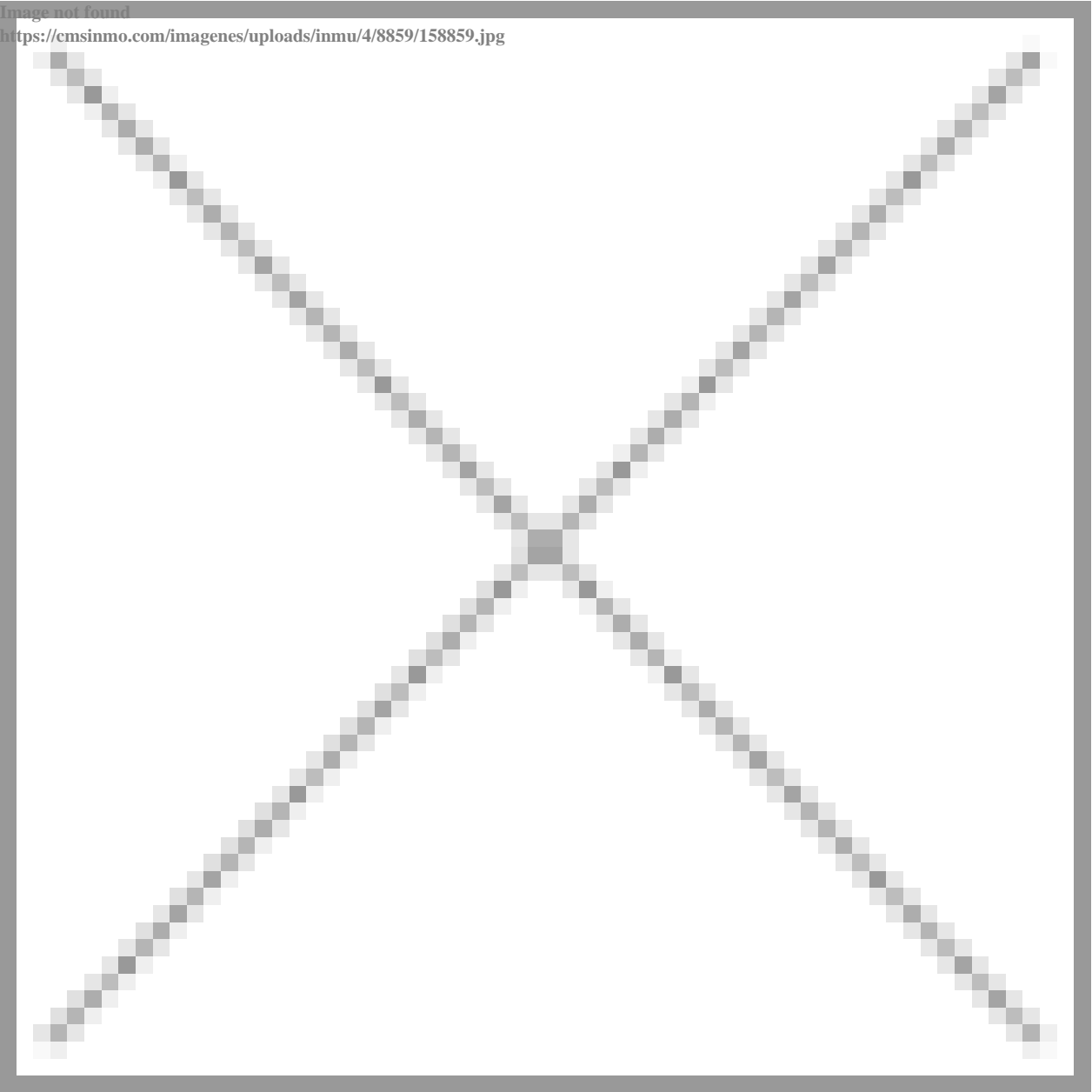


Image not found
<https://cmsinmo.com/imagenes/uploads/inmu/4/8859/168859.jpg>

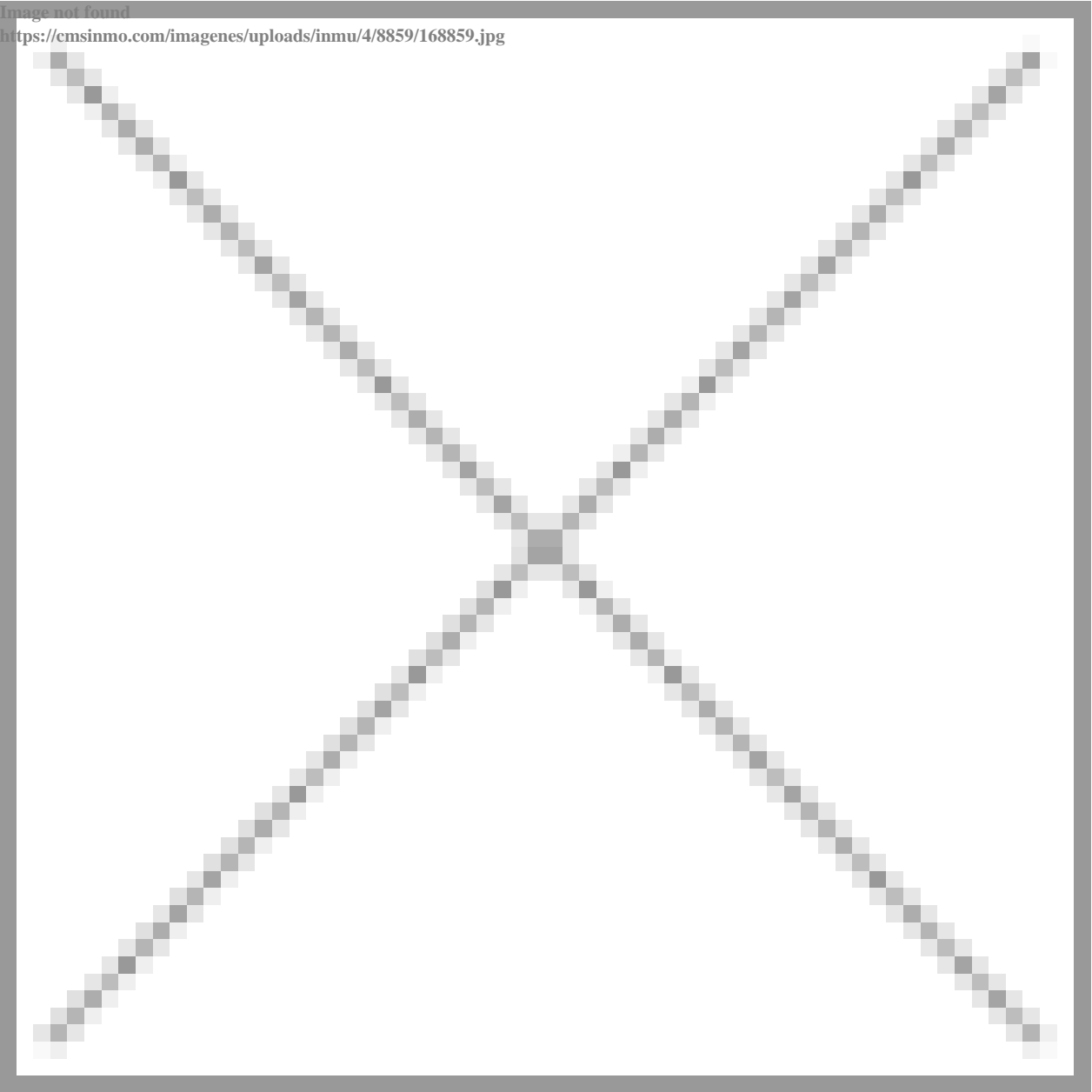


Image not found

<https://cmsinmo.com/imagenes/uploads/inmu/4/8859/178859.jpg>

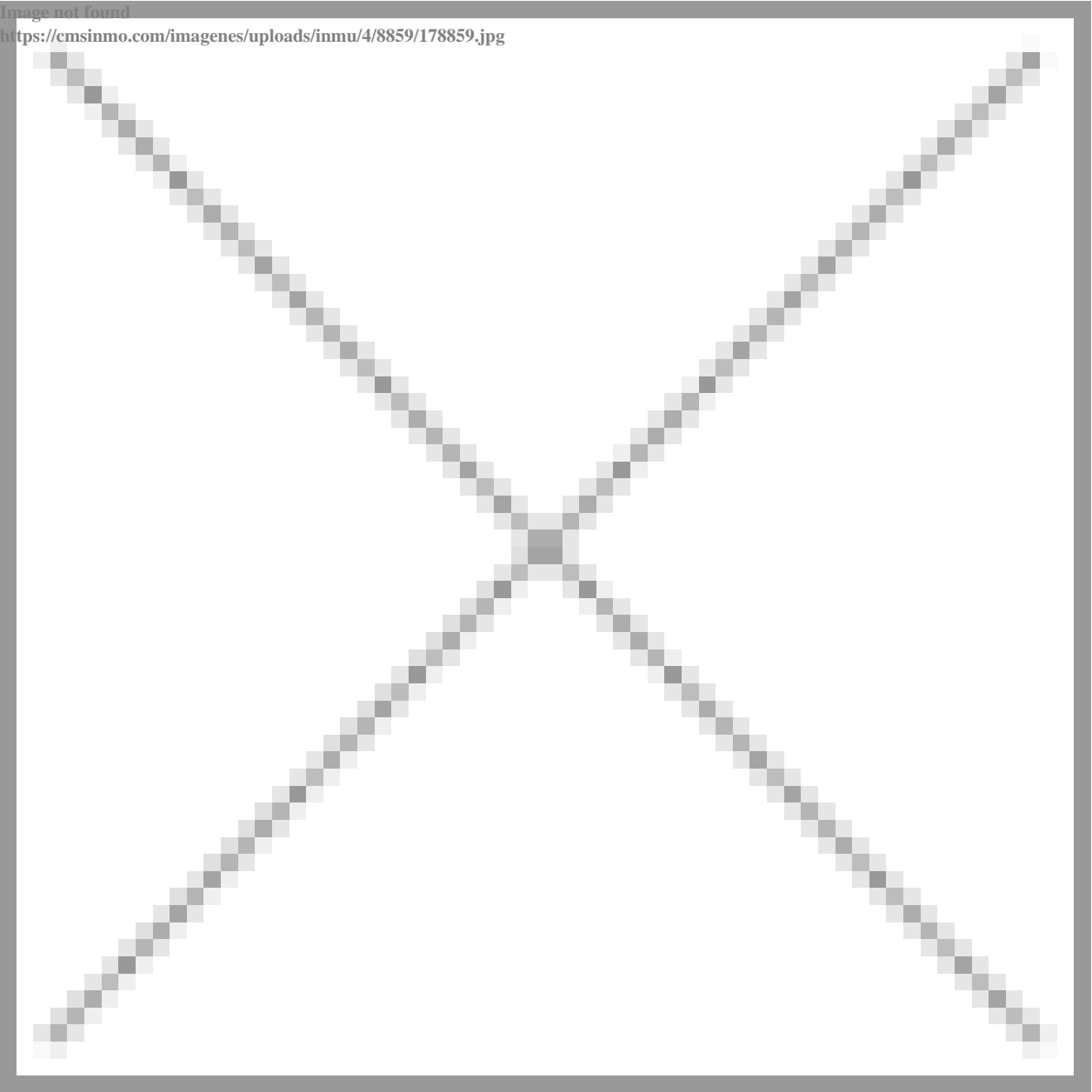


Image not found
<https://cmsinmo.com/imagenes/uploads/inmu/4/8859/188859.jpg>

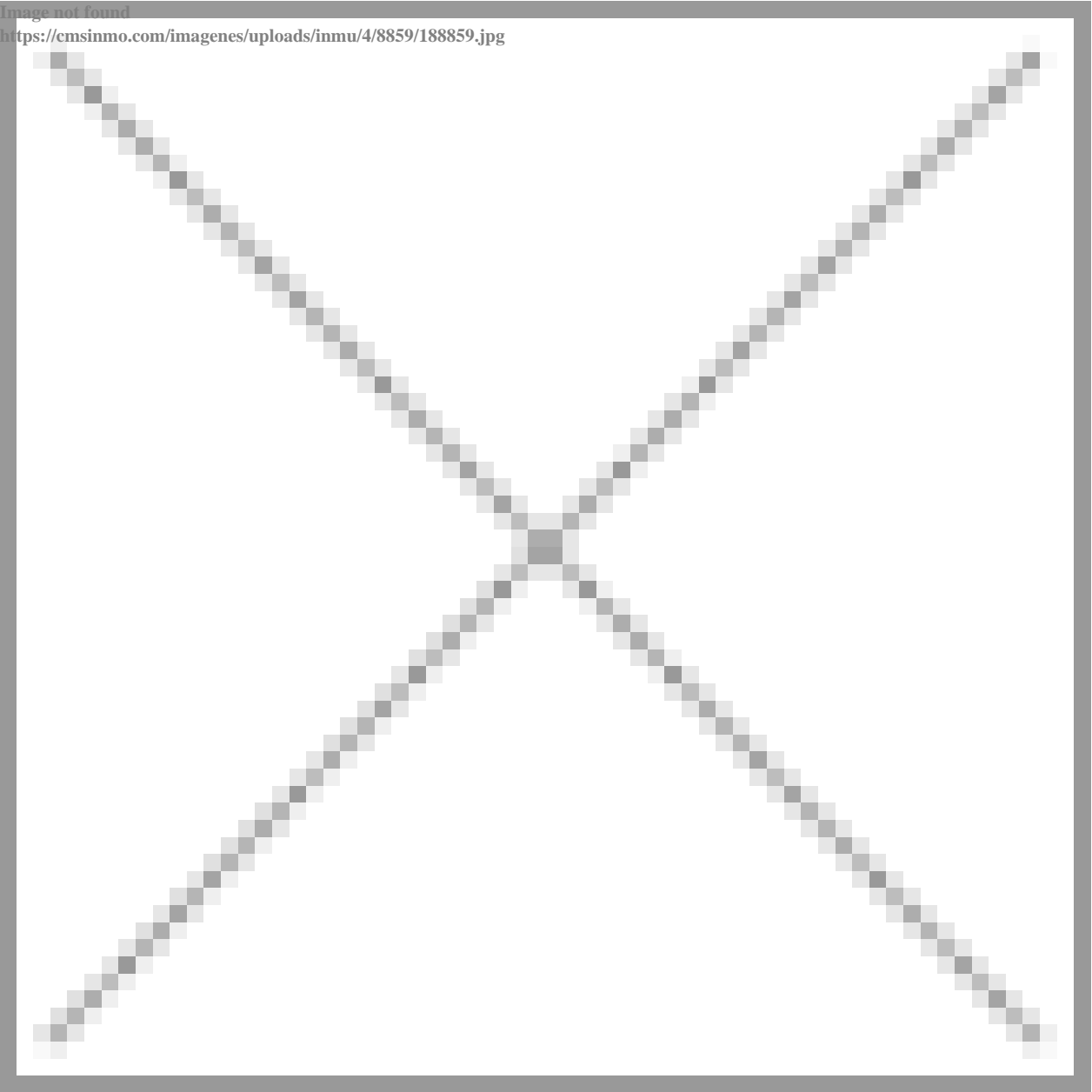


Image type unknown

<https://cmsinmo.com/imagenes/uploads/inmu/4/8859/198859.jpg>



"Experience our experience - Because you deserve the best"