



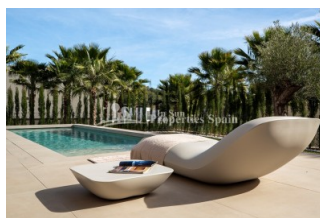
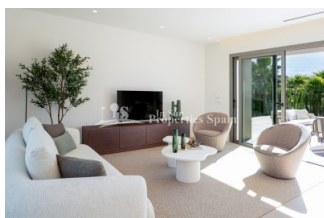
REF: # 12964

()



INFO

PRIX:	1.165.000 €
Type de propriété:	Villa
Emplacement:	()
Chambres à coucher:	3
Ba ENFANTS:	3
Built:	150 (m2)
pas:	699 (m2)
Terrasse:	138 (m2)
A ENFANTS:	
de plante:	-
MESSAGE	-



DESCRIPTION

NEW BUILD 150M2 FULLY FURNISHED *KEY READY* LUXURY VILLA built on a plot of 699m2 and located in the prestigious area of Las Colinas Golf, Orihuela Costa. The property consists of 3 bedrooms (with fitted wardrobes), 3 bathrooms, an open plan fully equipped kitchen, spacious dining / lounge area and a 138m2 terrace. Complete with furnishings that have been thoughtfully selected by interior designers, making the most of every inch of space to create a stylish and functional living experience. It is perfect for clients looking to move in to a new home in Spain with out delay! This quiet location offers lots of privacy and is surrounded by the local Mediterranean forest and green area. In the heart of the Costa Blanca South, this leafy valley of 330 hectares between hills is very close to the sea, only 15mins drive, and has a magnificent championship golf course that crosses it. Las Colinas Golf & Country Club provides a wide variety of amenities for its property owners; tennis, padel-tennis, fitness, massage, golf, restaurants, mini-market with fresh baked bread and much more. You will enjoy 200,000 square meters of beautiful Mediterranean landscapes, take scenic walks through the lush indigenous, native flora and the extensive fields of orange and lemon groves. Las Colinas golf is located 40 minutes from Alicante airport and 1 hour Murcia - Corvera airport.

STYLE <ul style="list-style-type: none">• moderne• contemporain	VIEW <ul style="list-style-type: none">• Panoramico• Une vue sur la montagne	CLIMATISATION <ul style="list-style-type: none">• Central	DISTANCE : <div>Beach : 8 Km</div> <div>aéroport: 60 Km</div> <div>: 5 Km</div>
POSITION <div>Sud-Ouest</div>	PARKING PAS. CAR <div>: 2</div>	ZONES <ul style="list-style-type: none">• stockage• Ou chambre BAIGNADE	ÉTAGE <ul style="list-style-type: none">• Tuiles
CUISINE <ul style="list-style-type: none">• Cuisine• Cuisine équipée• Granit	JARD RIVIÈRE ET TERRASSES N <ul style="list-style-type: none">• Terrasse couverte• Terrasse ouverte• Feux extérieurs• irrigation automatique• Palm• Paysage• clôtures• murs en pierre• hayon• cuisine d'été• barbecue / grill• Jard RIVER n privée	CHAUFFAGE <ul style="list-style-type: none">• Chauffage électrique	EXTRA <ul style="list-style-type: none">• Intégré• Alarme• Porte de sécurité• Double vitrage• Gardien de sécurité













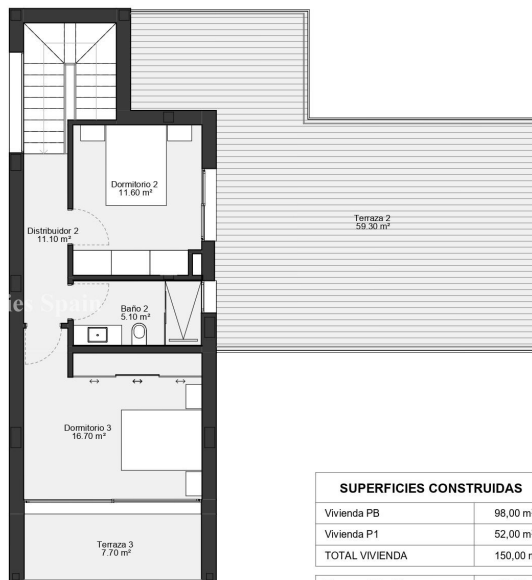








Planta baja



Planta primera

SUPERFICIES CONSTRUIDAS	
Vivienda PB	98,00 m²
Vivienda P1	52,00 m²
TOTAL VIVIENDA	150,00 m²
Terrazas PB y P1	188,00 m²













"Experience our experience - Because you deserve the best"