



REF: # 11695

()



#### INFO

**PRICE:** 296.000 €

**PROPERTY TYPE:** Apartment

**LOCATION:** ()

**BEDROOMS:** 2

**Bathrooms:** 2

**Build:** 88 (m2)

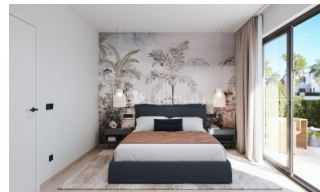
**Plot:** -

**Terrace:** 17 (m2)

**Year:**

**Floor:** -

**Old price** -



#### DESCRIPTION

SPECTACULAR APARTMENT COMPLEX LOCATED IN SANTA ROSALIA LAKE AND LIFE RESORT - wonderful communal facilities and panoramic views of the pool! This wonderful 88m2 apartment consists of 2 bedrooms, 2 bathrooms, open plan kitchen / lounge / dining area, 17m2 private terrace with underground parking and storage room. The kitchen is equipped and includes the following appliances: ceramic hob, oven, microwave, extractor hood, glass finished refrigerator, and integrated dishwasher. They are designed by Zorg Arquitectos deliver cutting-edge design, top-quality materials from market-leading brands ensuring a luxurious experience. The apartments offer panoramic views of the pool, common areas, and, depending on the floor, the countryside and the beautiful Santa Rosalía Lake. The apartments offer panoramic views of the pool, common areas, and, depending on the floor, the countryside and the beautiful Santa Rosalía Lake. Its exclusive central, landscaped common area boasts a fabulous contemporary pool, social club and green areas. A unique concept in luxury living surrounding an impressive crystal blue lake right here in the region of Murcia. Santa Rosalia Lake and Lifestyle Resort is a unique concept in Spain's wonderful Costa Cálida region located just 10 minutes to the beaches of the Mar Menor. Offering high quality new design properties nestled amongst the fabulous facilities the resort has to offer with the magnificent crystal lake as the centrepiece and jewel in the crown. The 700.000m2 resort consists primarily of green landscaped areas and an impressive turquoise coloured lake surrounded by white sandy beaches with a luxury beach club house on hand. Golfing activities are just one of many to enjoy in this haven of luxury lifestyle living. The resort is surrounded by Golf courses and close to all

types of amenities and facilities, sports and leisure activities. Santa Rosalia is a unique place to relax and enjoy your home in Spain and all that it has to offer. The exclusive location guarantees high demand and an attractive investment potential. Only 30km from Murcia (Corvera Airport).

<b>STYLE</b>	<b>VIEWS</b>	<b>AIRCONDITIONING</b>	<b>DISTANCE TO :</b>
<ul style="list-style-type: none"> <li>• Modern</li> <li>• Contemporary</li> </ul>	<ul style="list-style-type: none"> <li>• Panoramic views</li> </ul>	<ul style="list-style-type: none"> <li>• Central airconditioning</li> </ul>	Beach : 3 Km <hr/> Airport: 30 Km
<b>FURNITURE</b>	<b>PARKING</b>	<b>FLOORING</b>	<b>KITCHEN</b>
<ul style="list-style-type: none"> <li>• Not furnished</li> </ul>	Parking no Cars: 1 <hr/>	<ul style="list-style-type: none"> <li>• Tile floors</li> <li>• Stone floors</li> </ul>	<ul style="list-style-type: none"> <li>• Open kitchen</li> <li>• Equipped kitchen</li> </ul>
<b>GARDEN AND TERRACES</b>	<b>EXTRA</b>		
<ul style="list-style-type: none"> <li>• Palm trees</li> <li>• Play Ground</li> <li>• Landscaped</li> <li>• Fenced</li> <li>• Communal Garden</li> </ul>	<ul style="list-style-type: none"> <li>• Built in wardrobes</li> <li>• Reinforced door</li> <li>• Double glazed windows</li> <li>• Storage room</li> </ul>		

PROPERTY GALLERY













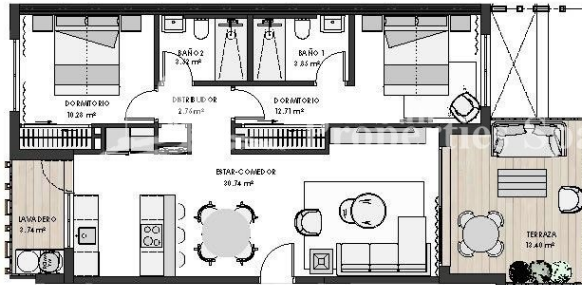




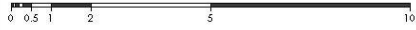
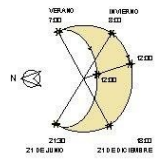








NOTA: La posición representada se encuentra girada 90° con respecto a su posición real.

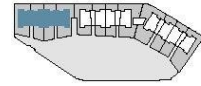


**VIVIENDA**

Escala:	1
Nivel:	1
Letra:	B

**SUPERFICIES**

Construida con comunes:	88.62 m <sup>2</sup>
Útil total terrazas:	17.14 m <sup>2</sup>



*"Experience our experience - Because you deserve the best"*