



REF: # 11782



INFO

PRICE: 449.000 €

PROPERTY TYPE: Penthouse

LOCATION:

BEDROOMS: 3

Bathrooms: 2

Build: 83 (m2)

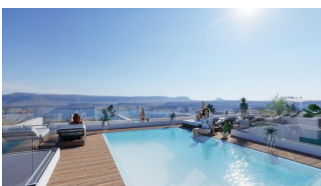
Plot: -

Terrace: 91 (m2)

Year: -

Floor: -

Old price -



DESCRIPTION

NEW BUILD PENTHOUSES IN TORREVIEJA New Build avant-garde design five-storey development in

Torre Vieja with 34 exclusive properties offers a variety of living options, from stylish apartments to penthouses with breathtaking panoramic views. Every corner of residential has been carefully planned to maximise space and natural light, creating bright and welcoming environments that invite well-being. Residential majestically located in the heart of Torre Vieja, consolidating itself as a residential development full of elegance and modernity. Its strategic location ensures that residents will feel part of this amazing city with easy access to a variety of services and attractions. It is a unique opportunity to invest in a sophisticated lifestyle in the heart of Torre Vieja! Its unrivalled location, avant-garde design and meticulous attention to detail ensure that this residential development is much more than a place to live: it is a home where dreams take shape and life is lived to the fullest. Torre Vieja is a Spanish town in the province of Alicante, on the Costa Blanca. It is known for its typically Mediterranean climate and coastline. It has boardwalks with resorts along its sandy beaches. The small Museum of the Sea and Salt houses exhibitions on the fishing and salt history of the city. In the interior, the Lagunas de La Mata-Torre Vieja Natural Park has trails and two salty lagoons, one pink and the other green. Alicante airport located 40 minutes away and Murcia airport about 1 hour away.

VIEWS

- Panoramic views
- Sea views

AIRCONDITIONING

- Central airconditioning

PARKING

Parking no Cars: 1

EXTRA

- Lift





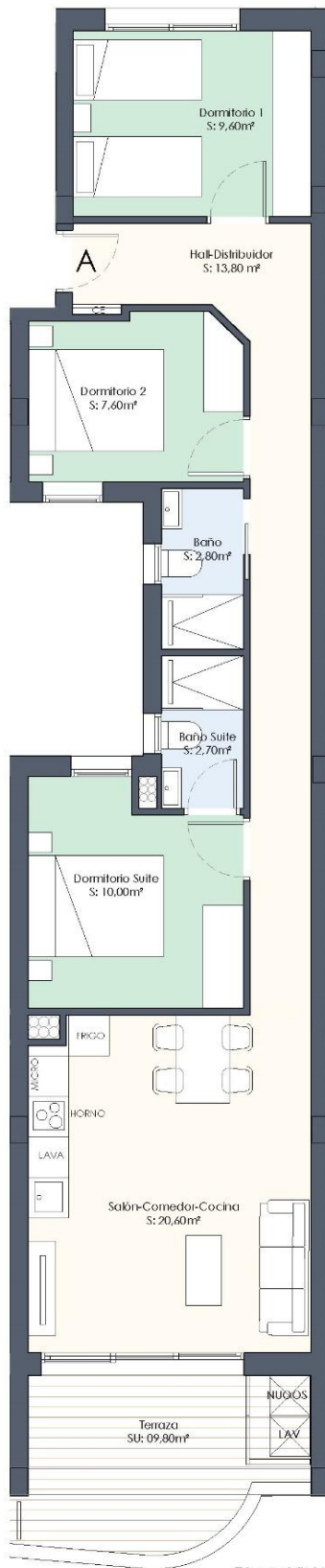




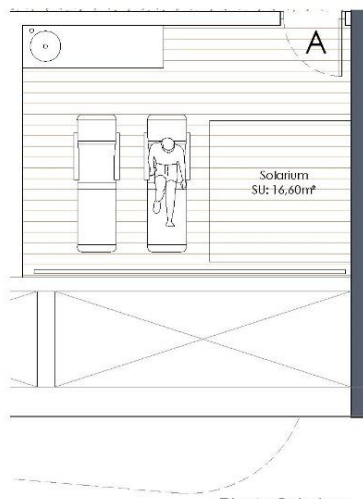








Planta Vivienda

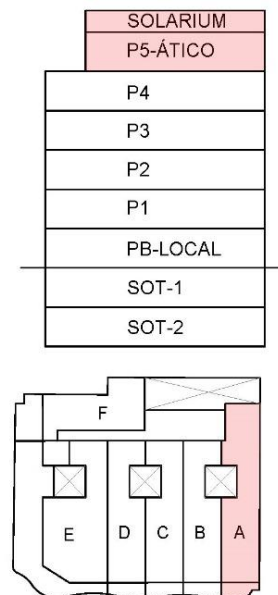


Planta Solarium

Vivienda A - 3 Dormitorios

SUP. ÚTIL	(m²)
Hall - Distribuidor	13,80
Dormitorio 1	9,60
Baño 1	2,80
Dormitorio 2	7,60
Dormitorio Suite	10,00
Baño Suite	2,70
Salón-Comedor-Cocina	20,80
SUP. ÚTIL INTERIOR	67,30
Terraza 1	9,80
Solarium	16,60

SUP. CONST VIVIENDA	83,20
SUP. CONST TERRAZA	11,40
SUP. CONST SOLARIUM	16,60
SUP. CONST ZZCC	9,80
TOTAL VIVIENDA	121,00











"Experience our experience - Because you deserve the best"