



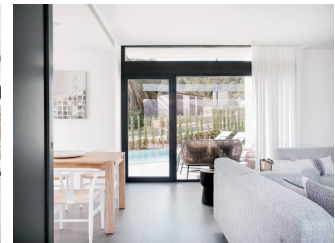
REF: # 12663

()



#### INFO

|                |           |
|----------------|-----------|
| PRICE:         | 700.000 € |
| PROPERTY TYPE: | Villa     |
| LOCATION:      | ()        |
| BEDROOMS:      | 3         |
| Bathrooms:     | 2         |
| Build:         | 123 (m2)  |
| Plot:          | 570 (m2)  |
| Terrace:       | 95 (m2)   |
| Year:          | -         |
| Floor:         | -         |
| Old price      | -         |



#### DESCRIPTION

New Build Villas for Sale at La Manga Club – Luxury Living in a Prestigious Resort Modern, Spacious Villas in a Central Location Discover the stunning new-build villas for sale at La Manga Club, thoughtfully designed to meet the needs of modern living. These luxurious properties offer practical layouts, high-end finishes, and access to all the amenities of this world-renowned resort. Situated in the heart of La Manga Club, this exclusive development features 29 spacious plots ranging from 500m<sup>2</sup> to 746m<sup>2</sup>. Buyers can choose villas with 2, 3, or 4 bedrooms, complete with private pools, landscaped gardens, and secure parking. Whether you are looking for a holiday home or a permanent residence, these villas offer a perfect blend of comfort, style, and convenience.

Premium Features and High-Quality Finishes Each villa is constructed to the highest standards, incorporating modern design elements and advanced technology for maximum comfort. Key features include: High-performance aluminum carpentry with thermal bridge breaks (CORTIZO or similar). Insulating double glazing for energy efficiency and comfort. Home automation systems to control lighting, electricity, and electronics. Aerothermal systems for heating, cooling, and domestic hot water. High-efficiency ventilation with controlled mechanical systems. Security features, including alarm systems and pre-installed video surveillance. Exclusive Location – La Manga Club Resort La Manga Club is one of Europe's leading sport and leisure resorts, offering an unparalleled lifestyle in a stunning Mediterranean setting. Covering 1,400 acres (560 hectares), the resort is bordered by natural parks and unspoiled beaches, providing breathtaking surroundings and year-round sunshine. Residents enjoy access to world-class amenities, including: Three championship 18-hole golf courses

The Racquets Club with 28 tennis and padel courts Fitness and spa facilities in the Grand Hyatt La Manga Club Golf & Spa Private beach access and fine dining options FIFA-standard football pitches for sports enthusiasts Excellent Connectivity and Nearby Attractions La Manga Club is perfectly located with excellent transport links to major European cities: Corvera Airport – 50 km (approx. 35 minutes by car) Alicante Airport – 100 km (approx. 1 hour by car) Other nearby points of interest include: Beaches – Less than 3 km to the pristine Mediterranean coastline Golf Courses – On-site with three championship courses Shopping Centers – Located 10-15 km away for all your retail needs Marinas and Ports – Accessible within 20 km for sailing and water sports lovers The Ideal Place for Luxury Living La Manga Club offers a vibrant and secure community ideal for families, retirees, and golf enthusiasts. Enjoy a peaceful and private lifestyle with access to first-class facilities, all while surrounded by natural beauty and modern conveniences. Experience luxury living at its finest with these new-build villas at La Manga Club. Don't miss this opportunity to own a home in one of Europe's most prestigious resorts. Contact us now for more details or to schedule a visit.

**VIEWS**

- Panoramic views

**PARKING**

Parking no Cars: 1

---

**GARDEN AND  
TERRACES**

- Fenced
- Private garden













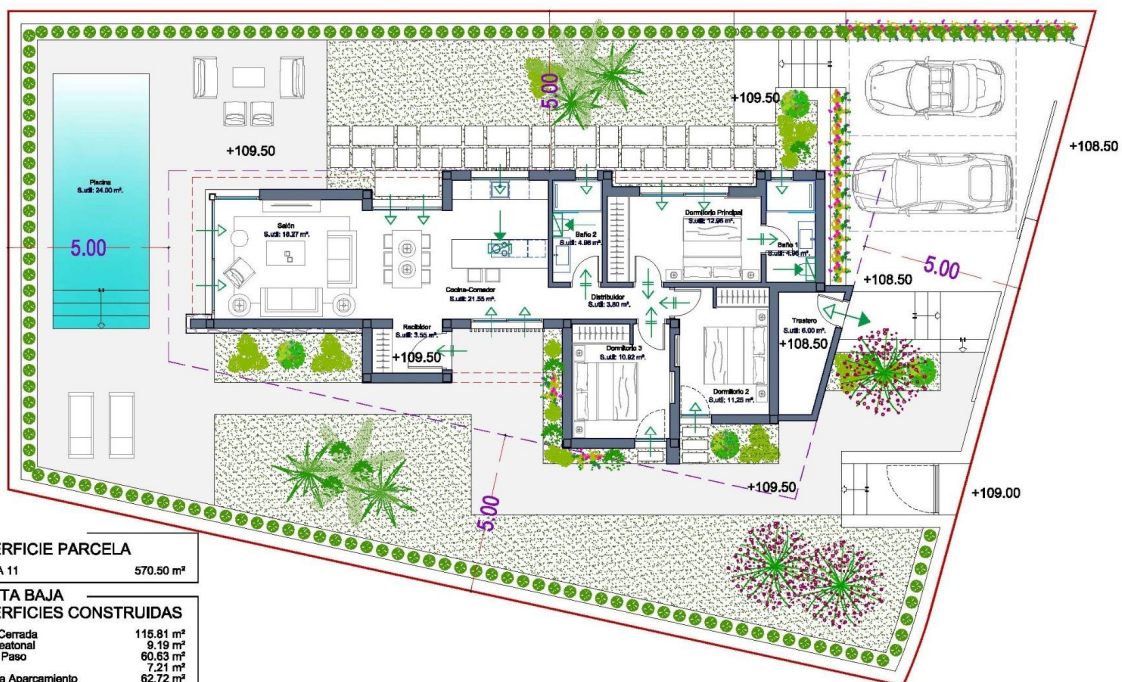
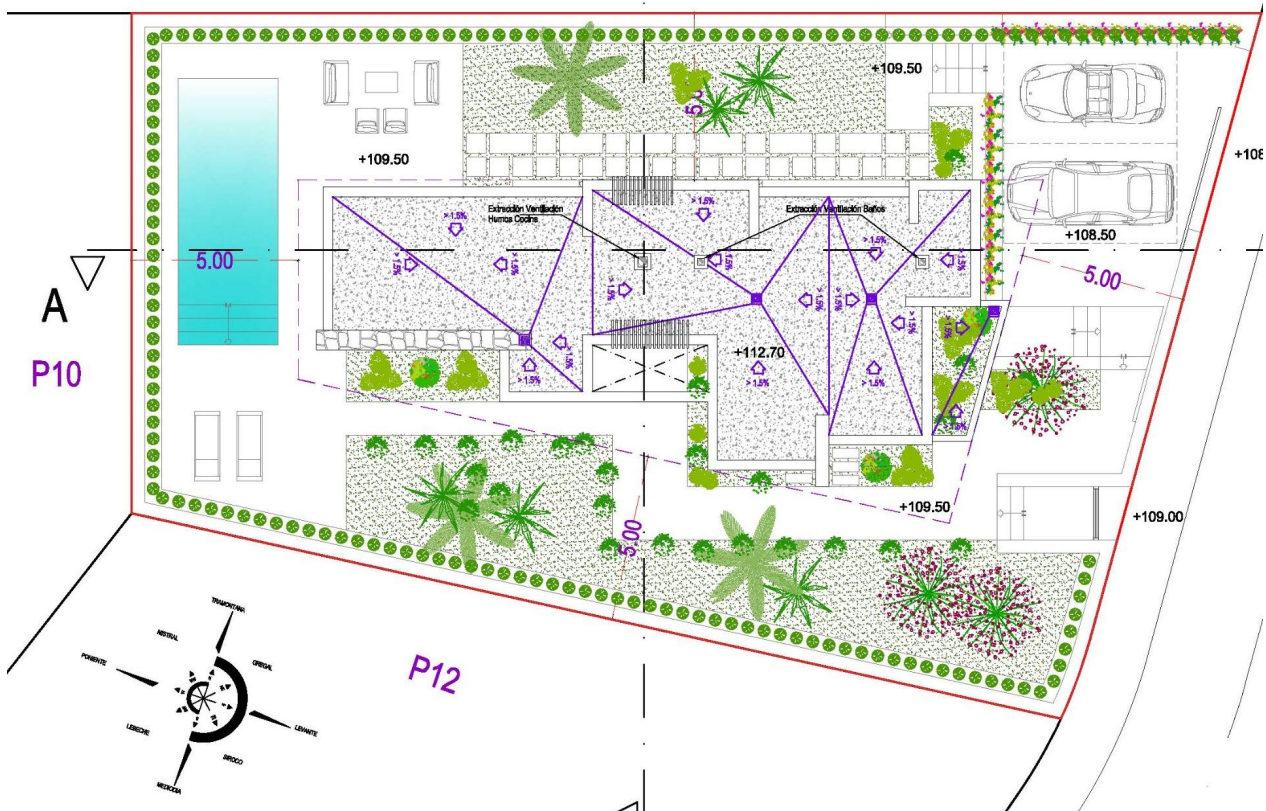












#### SUPERFICIE PARCELA

|            |                       |
|------------|-----------------------|
| PARCELA 11 | 570.50 m <sup>2</sup> |
|------------|-----------------------|

#### PLANTA BAJA SUPERFICIES CONSTRUIDAS

|                         |                       |
|-------------------------|-----------------------|
| Vivienda Cerrada        | 115.81 m <sup>2</sup> |
| Acceso Peatonal         | 9.19 m <sup>2</sup>   |
| Zonas de Paso           | 60.63 m <sup>2</sup>  |
| Trastero                | 7.21 m <sup>2</sup>   |
| Plataforma Aparcamiento | 62.72 m <sup>2</sup>  |
| Terraza Descubierta     | 95.11 m <sup>2</sup>  |
| Zonas Ajardinadas       | 195.91 m <sup>2</sup> |
| Piscina                 | 24.00 m <sup>2</sup>  |

#### PLANTA BAJA SUPERFICIES ÚTILES

|                      |                      |
|----------------------|----------------------|
| Recedidor            | 3.55 m <sup>2</sup>  |
| Salón                | 18.27 m <sup>2</sup> |
| Cocina-Corredor      | 21.55 m <sup>2</sup> |
| Distribuidor         | 3.80 m <sup>2</sup>  |
| Dormitorio Principal | 12.96 m <sup>2</sup> |
| Baño 1               | 4.96 m <sup>2</sup>  |
| Dormitorio 2         | 11.25 m <sup>2</sup> |
| Dormitorio 3         | 10.92 m <sup>2</sup> |
| Baño 2               | 4.96 m <sup>2</sup>  |
| Trastero             | 6.00 m <sup>2</sup>  |

"Experience our experience - Because you deserve the best"