



**In Sun
Properties Spain**
since 1999

REF: # 12770



INFO

PRICE: 369.900 €

PROPERTY TYPE: Apartment

LOCATION:

BEDROOMS: 3

Bathrooms: 2

Build: 83 (m2)

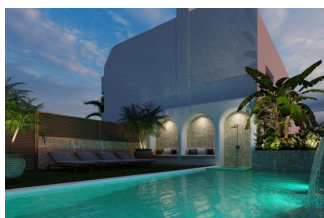
Plot: -

Terrace: 90 (m2)

Year: -

Floor: -

Old price -



DESCRIPTION

New Build Bungalows in San Pedro del Pinatar – Modern Living by the Sea Exclusive Residential Complex with Modern Bungalows Discover this new residential complex of 8 modern bungalows in San Pedro del Pinatar, one of the most desirable locations on the Costa Cálida. These contemporary homes offer 3 bedrooms, 2 bathrooms, an open-plan kitchen with a spacious living area, built-in wardrobes, and a private terrace. You can choose between: Ground floor bungalows with a private garden and on-plot parking. Top floor bungalows with a private solarium, perfect for enjoying the Mediterranean climate. High-Quality Features in Every Home Each bungalow includes top-tier finishes and modern features for maximum comfort: Air conditioning unit included. Aerothermal system for energy-efficient hot water production. Fully fitted kitchen with BOSCH appliances. Fully equipped bathrooms with furniture, mirrors, shower screens, and electric underfloor heating. Electric shutters on all windows. LED lighting throughout the interior and exterior of the property. Additional features for top-floor bungalows: Aluminum pergola for shade and style. Outdoor summer kitchen, perfect for entertaining. Private parking space and storage room for bicycles. Community Amenities Residents of this exclusive complex will enjoy: A beautifully landscaped communal area. A community swimming pool to relax and refresh. Prime Location in San Pedro del Pinatar San Pedro del Pinatar is a privileged coastal town, located between the Mar Menor and the Mediterranean Sea. It is well known for its beaches, natural mud baths, and excellent nautical facilities, including marinas and yacht clubs. The area is a paradise for water sports enthusiasts and offers a relaxed Mediterranean lifestyle with all essential services nearby. San Pedro del Pinatar boasts an established

year-round community, with access to sports facilities, an indoor swimming pool, and a vibrant social scene, thanks to the region's mild winter climate. The famous Lo Pagán area has grown significantly, offering a full range of amenities, shops, restaurants, and entertainment options. Distances to Key Points of Interest Dos Mares Shopping Center – 5 minutes. Mar Menor Beaches – 10 minutes. Murcia-Corvera Airport – 30 minutes. Alicante Airport – 1 hour. Invest in Quality & Lifestyle These modern bungalows offer an exceptional opportunity to own a home in one of the most sought-after areas of the Costa Cálida. Whether as a holiday retreat, investment, or permanent residence, this is your chance to embrace the Mediterranean lifestyle. Contact us today to schedule a visit and secure your dream home in San Pedro del Pinatar!

VIEWS

- Panoramic views

AIRCONDITIONING

- Central airconditioning

PARKING

Parking no Cars: 1

**GARDEN AND
TERRACES**

- Fenced
- BBQ/grill













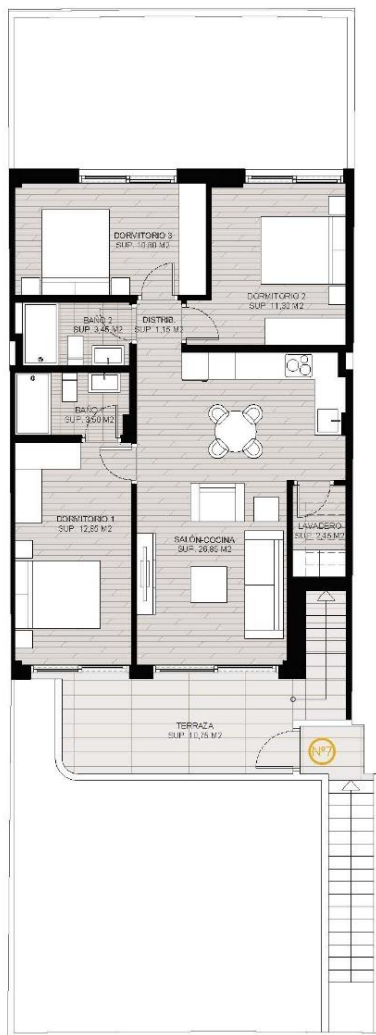




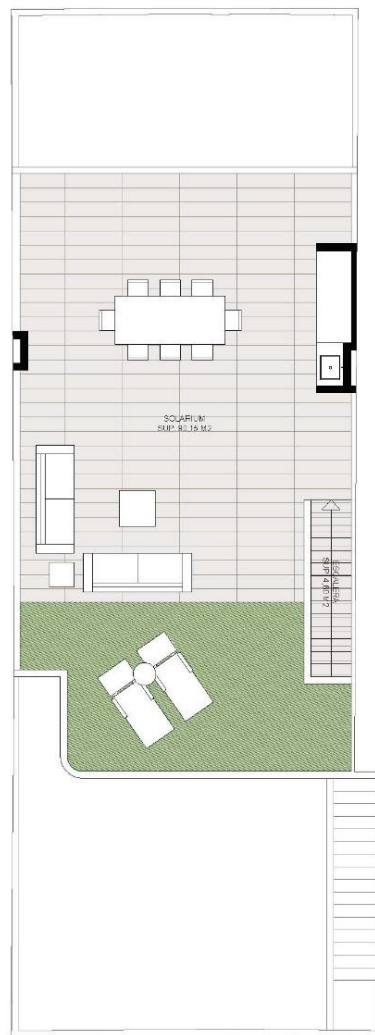








PLANTA PRIMERA



PLANTA SOLARIUM

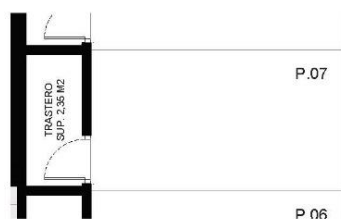
E.I.75



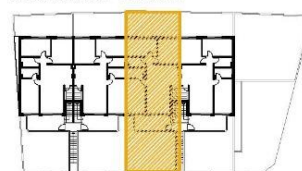
VIVIENDA Nº7 RESUMEN SUPERFICIES VIVIENDA 07. 3 DORMITORIOS. PLANTA PRIMERA

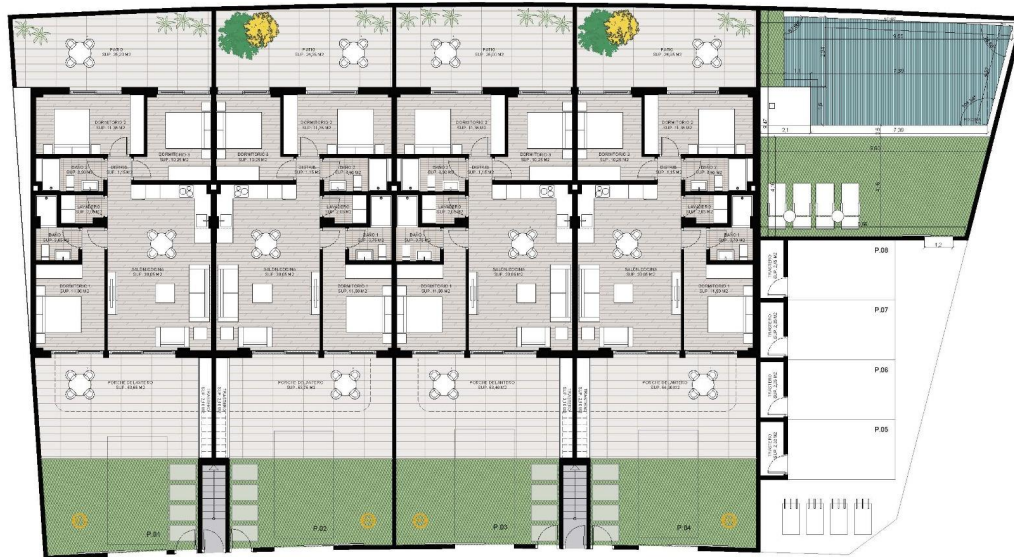
	SUP. ÚTIL	SUP. CONST.
SUPERFICIE VIVIENDA	72,15 m²	83,35 m²
SUPERFICIE EXTERIOR	105,50 m²	114,68 m²
SUPERFICIE TRASTERO	2,10 m²	2,88 m²
SUPERFICIE TOTAL	179,75 m²	200,91 m²

Este plano carece de contractualidad y es meramente orientativo, pudiendo estar sujeto a modificaciones de carácter técnico derivadas del desarrollo del Proyecto de Edificación y su ejecución.
El amueblamiento dibujado es a título indicativo, no estando incluido en el precio los muebles, electrodomésticos ni elementos de decoración.
Solo se incluye los elementos incluidos en la memoria del Proyecto visado.



APARCAMIENTO + TRASTERO





N
E:1.125
PLANO Nº
01

Este plano carece de contractualidad y es meramente orientativo, pudiendo estar sujeto a modificaciones de carácter técnico derivadas del desarrollo del Proyecto de Edificación y su ejecución. El amueblamiento dibujado es a título indicativo, no estando incluido en el precio los muebles, electrodomésticos ni elementos de decoración. Solo se incluye los elementos incluidos en la memoria del Proyecto visado.

"Experience our experience - Because you deserve the best"