



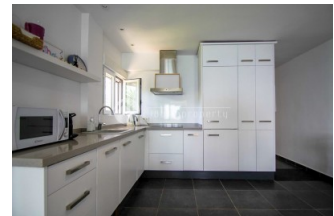
REF: # 13117

()



#### INFO

PRICE:	365.000 €
PROPERTY TYPE:	Apartment
LOCATION:	()
BEDROOMS:	2
Bathrooms:	1
Build:	60 (m2)
Plot:	-
Terrace:	-
Year:	1986
Floor:	-
Old price	-



#### DESCRIPTION

This charming apartment is located on the seafront, just a 5-minute walk from the town center of Altea and all essential services. Situated on a bright corner of the ground floor, it enjoys abundant natural light throughout the day. The property features a spacious living-dining area with direct access to a glazed terrace offering open sea views—perfect for enjoying the sea breeze year-round. The recently renovated open-plan kitchen integrates seamlessly with the main living space. There are two double bedrooms, one of which boasts beautiful sea views, and a full bathroom. Air conditioning is installed in both the living room and bedrooms for added comfort. An ample storage room is included, ideal for storing bicycles, sports equipment, or even a quad bike. The well-maintained community offers a lovely garden with outdoor dining space and an impressive communal rooftop terrace with a chill-out area, providing panoramic 360° views of the Mediterranean Sea and the nearby mountains. This well-distributed, spacious, and bright property is perfect as a primary residence, holiday home, or a high-demand investment opportunity. Apartment Layout: Bright living-dining room with direct access to the glazed terrace Renovated open-plan kitchen Glazed terrace with sea views 2 double bedrooms (master with sea views) 1 full bathroom Air conditioning in living room and bedrooms Spacious storage room included Communal garden/terrace with outdoor dining area Communal rooftop terrace with seating area and 360° views."

<b>STYLE</b> <ul style="list-style-type: none"><li>Contemporary</li><li>Mediterranean</li></ul>	<b>AIRCONDITIONING</b> <ul style="list-style-type: none"><li>Central airconditioning</li></ul>	<b>DISTANCE TO :</b> <div>Beach : 50 m</div> <div>Airport: 40 Km</div> <div>Town center : 1 Km</div>	<b>ORIENTATION</b> <div>South east</div>
<b>FURNITURE</b> <ul style="list-style-type: none"><li>Furnished</li></ul>	<b>PARKING</b> <div>Garage no Cars : 1</div>	<b>FLOORING</b> <ul style="list-style-type: none"><li>Stone floors</li></ul>	<b>KITCHEN</b> <ul style="list-style-type: none"><li>Open kitchen</li><li>Equipped kitchen</li></ul>
<b>GARDEN AND TERRACES</b> <ul style="list-style-type: none"><li>Covered terrace</li><li>Exterior lights</li><li>Palm trees</li><li>Play Ground</li><li>Stone walls</li><li>Outdoor kitchen</li><li>Communal Garden</li></ul>	<b>HEATING</b> <ul style="list-style-type: none"><li>Central electric heating</li></ul>	<b>EXTRA</b> <ul style="list-style-type: none"><li>Reinforced door</li><li>Satellite TV</li><li>Internet</li></ul>	





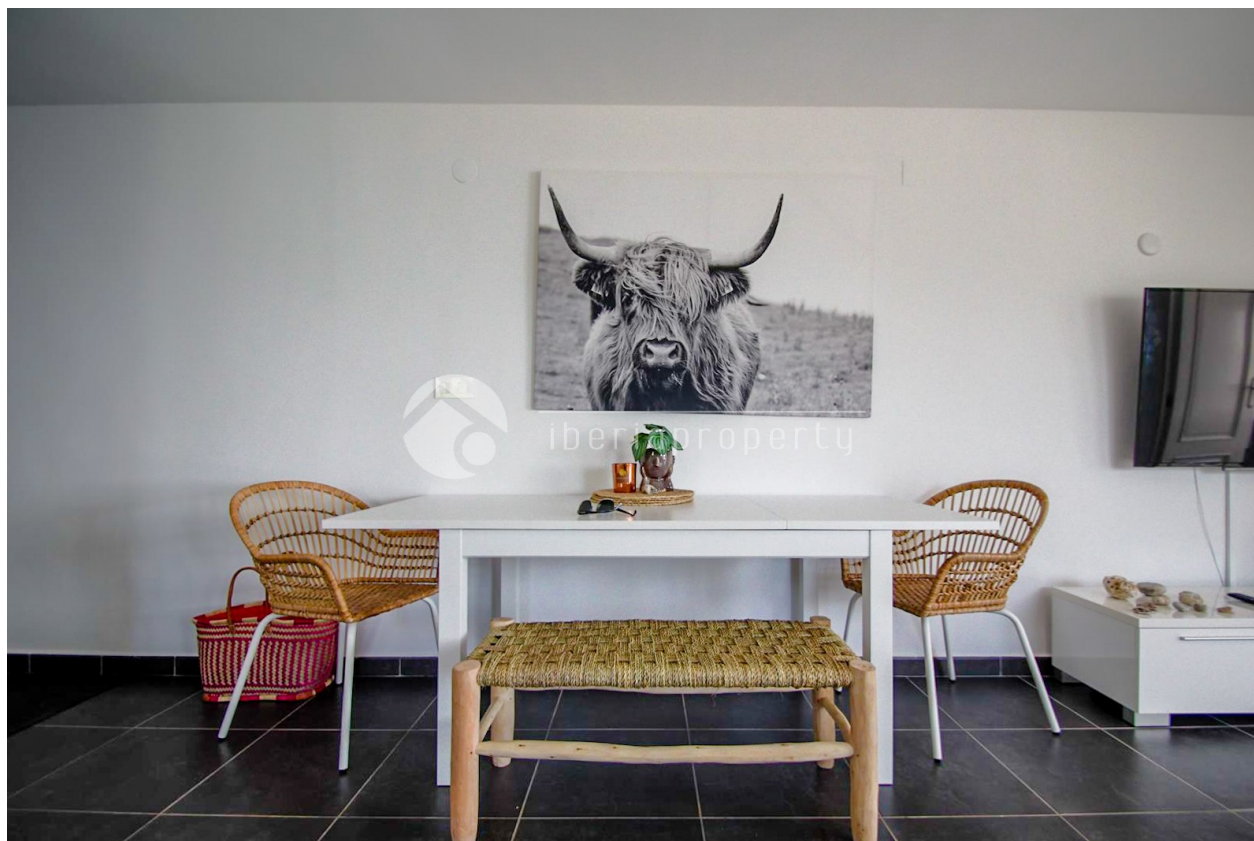
























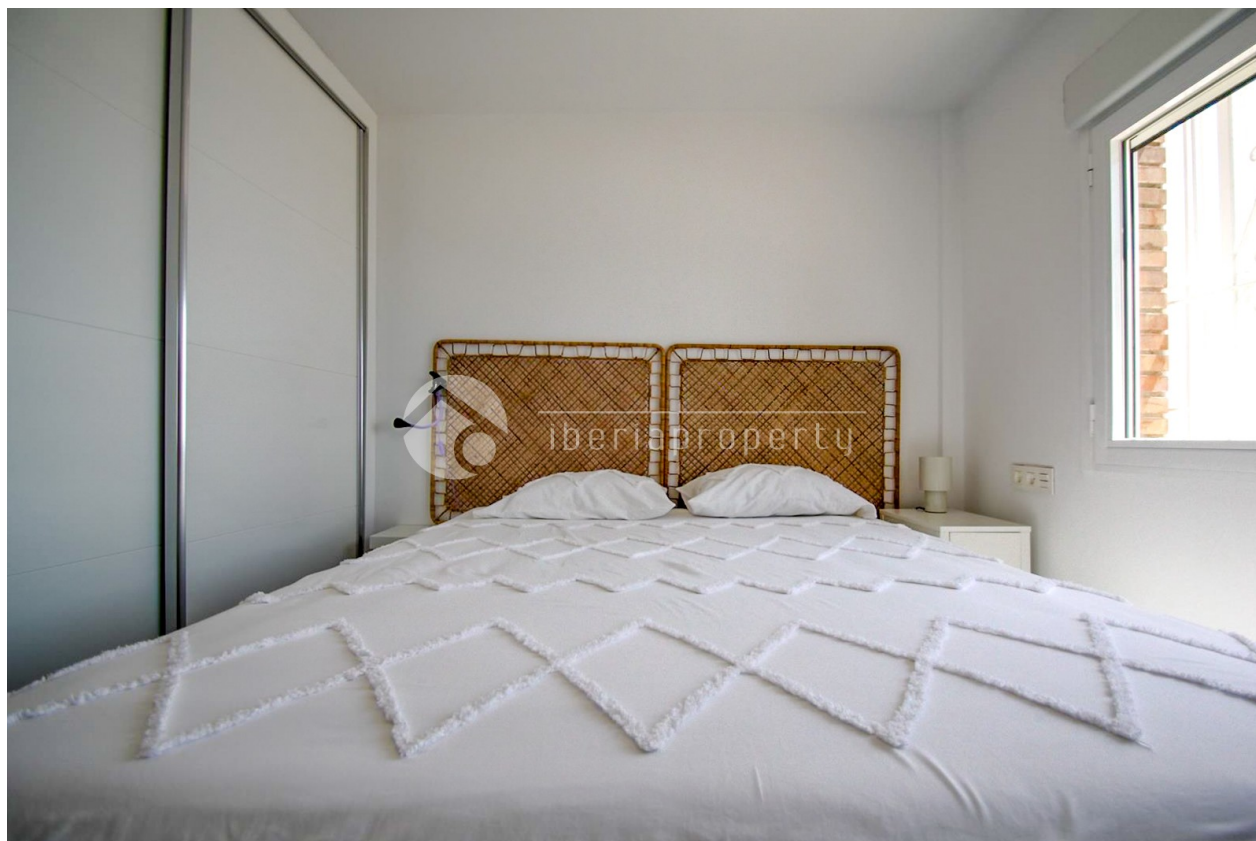






























*"Experience our experience - Because you deserve the best"*